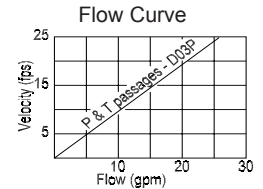
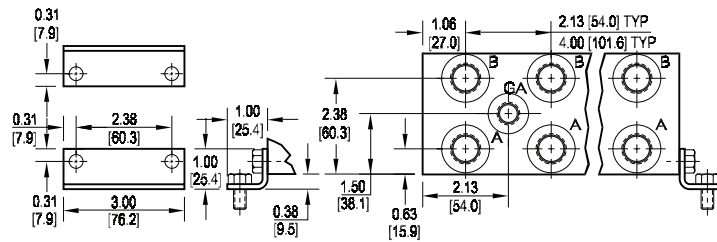
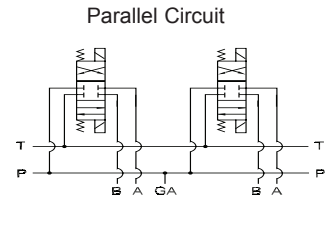
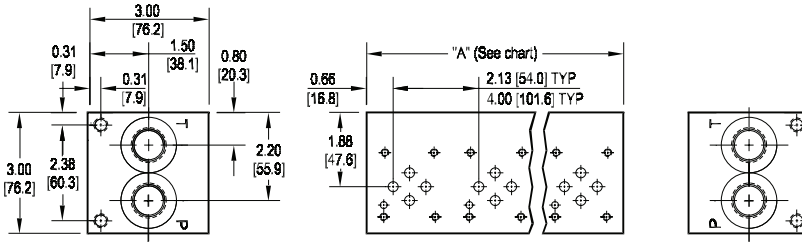


D03 Standard Flow Parallel Circuit Manifold



Rated flow 14 gpm @ 15 fps

All mounting hardware is supplied.
See page 62 for itemized list.

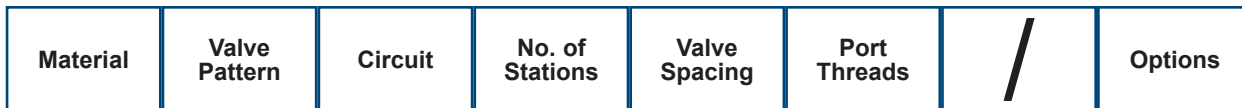
No. of stations	* 01	02	03	04	05	06	07	08	09	10	11	12	13	14	15	16
"A" length (code 2 spa.) inch [mm]	2.13 [54.0]	4.25 [108.0]	6.38 [162.1]	8.50 [215.9]	10.63 [270.0]	12.75 [323.9]	14.88 [378.0]	17.00 [431.8]	19.13 [485.9]	21.25 [539.8]	23.38 [593.9]	25.50 [647.7]	27.63 [701.8]	29.75 [755.7]	31.88 [809.8]	34.00 [853.6]
apx. weight alum lb [kg]	3 [1]	4 [2]	6 [3]	8 [4]	9 [4]	11 [5]	12 [5]	14 [6]	16 [7]	18 [8]	20 [9]	21 [10]	22 [10]	24 [11]	26 [12]	27 [12]
apx. weight iron lb [kg]	5 [2]	9 [4]	13 [6]	17 [8]	21 [10]	26 [12]	30 [14]	34 [15]	38 [17]	42 [19]	47 [21]	51 [23]	55 [25]	59 [27]	63 [29]	68 [31]
"A" length (code 4 spa.) inch [mm]	--	6.13 [155.7]	10.13 [257.3]	14.13 [358.9]	18.13 [460.5]	22.13 [562.1]	26.13 [663.7]	30.13 [765.3]								
apx. weight alum lb [kg]	--	6 [3]	9 [4]	12 [5]	15 [7]	19 [9]	22 [10]	25 [11]								
apx. weight iron lb [kg]	--	12 [5]	20 [9]	28 [13]	36 [16]	45 [20]	53 [24]	57 [26]								

Port code	Valve mtg.	Manifold mtg.
P, S	#10-24 UNC x 0.63 [16] DP	0.31-18 UNC x 0.44 [11.1] DP
B, M, T	M5 ISO 6H x 0.63 [16] DP	M8 ISO 6H x 0.44 [11.1] DP

* Length of 01 station with relief cavity is 3.00 [76.2]. Gauge port not available on 01 station.

Specifications, descriptions, and dimensional data are subject to correction or change without notice or incurring obligation.
Download latest catalog page revisions at www.daman.com.

Ordering Information



Material	
A	Aluminum - 6061-T6 3000† psi • 20.7 MPa
D	Ductile Iron - D4512 5000† psi • 34.5 MPa
N	Electroless Nickel Coated Ductile Iron - D4512 5000† psi • 34.5 MPa

† Working pressure should be considered in accordance with ISO 4413 to determine appropriate material type.

Circuit	
P	Parallel Circuit Standard Flow

Valve Spacing	
2	2.13 inch 54.0 mm
4	4.00 inch 101.6 mm

Options	
See next page for available options and ordering codes.	

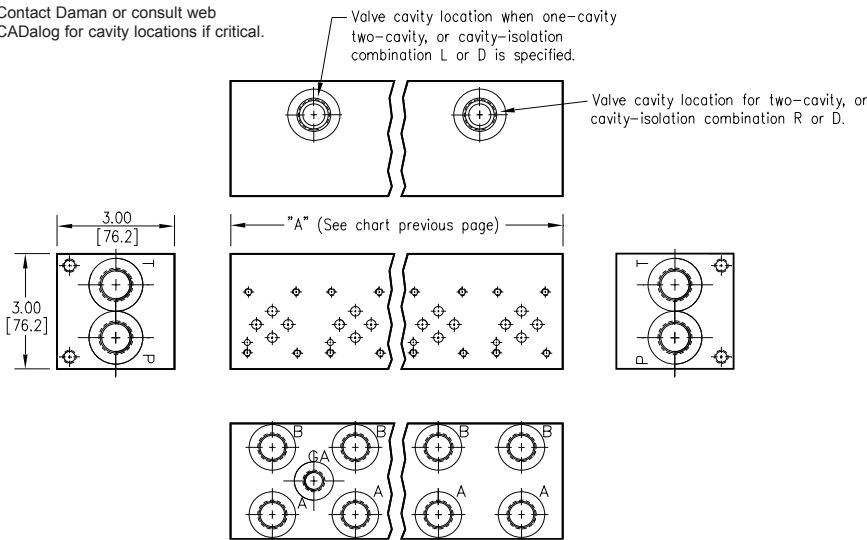
No. of Stations	
Aluminum	
01...16	Available with spacing code 2
02...08	Available with spacing code 4
Ductile Iron	
01...16	Available with spacing code 2
02...08	Available with spacing code 4

Port Threads				
	P & T	A & B	GA	
P	NPTF • ANSI B1.20.3	0.50	0.38	0.25
S	SAE • ISO 11926	-10	-8	-6
B	BSPP • ISO 1179	0.50	0.38	none
M	ISO • ISO 6149	M22	M18	none
T	BSPT • ISO 7	0.50	0.38	none

Valve Pattern	
D03	ISO 4401-03-02 NFPA T3.5.1-D03 See Tech Information

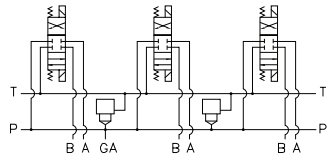
Options - D03 Standard Flow Parallel Manifold

Contact Daman or consult web CADalog for cavity locations if critical.



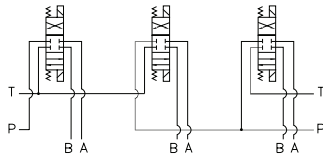
ISOLATIONS		
Daman isolation options allow a manifold to have two independent pressure and/or tank ports. Isolations are drilled rather than plugged to ensure a leakproof and failproof isolation.		
Ordering code letter:	* Isolation is between stations:	Available # of stations:
2.125 [54.0] spacing		
A	01 & 02	02-10
B	02 & 03	03-11
C	03 & 04	04-12
D	04 & 05	05-13
E	05 & 06	06-14
F	06 & 07	07-15
G	07 & 08	08-16
H	08 & 09	09-16
J	09 & 10	10-16
4.00 [101.6] spacing		
A	01 & 02	02-08
B	02 & 03	03-08
C	03 & 04	04-08
D	04 & 05	05-08
E	05 & 06	06-08
F	06 & 07	07-08
G	07 & 08	08

Parallel Circuit with one or two Cavities



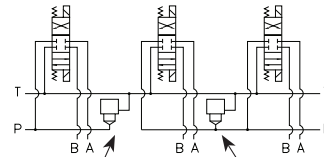
Valves with P in the nose and T out the side must be used.

Parallel Circuit with Isolations



Manifold shown with P isolation between 1 & 2 (PA), and T isolation between 2 & 3 (TB).

Cavity & Isolation Combinations



Option code L: Cavity left of isolation
Option code R: Cavity right of isolation
Option code D includes both cavities

* Stations are numbered left to right.

NOTES:

- 1) The GA port is not available on a (1) station manifold.
- 2) The GA port is not available when a pressure isolation is located between stations 1 & 2.
- 3) Some cavity and isolation combinations are not possible with spacing code 2. Consult factory to determine availability.

Ordering Information

...	Cavity	Pressure Isolation	Tank Isolation	Cavity & Isolation Combinations																																				
	<table border="1"> <thead> <tr> <th colspan="2">Cavity</th> </tr> </thead> <tbody> <tr> <td colspan="2">Omit if cavities not required</td> </tr> <tr> <td>C</td> <td>One Common cavity: No solenoid clearance. C-10-2 (P in nose)</td> </tr> <tr> <td>CC</td> <td>Two Common cavities: With solenoid clearance C-10-2 (P in nose) Available 03-16 stations with spacing code 2; Available 02-08 stations with spacing code 4. Not available in combination with isolation options.</td> </tr> <tr> <td>S</td> <td>One Sun Cavity: T-10A (P in nose) See Tech Info for valves.</td> </tr> </tbody> </table>	Cavity		Omit if cavities not required		C	One Common cavity: No solenoid clearance. C-10-2 (P in nose)	CC	Two Common cavities: With solenoid clearance C-10-2 (P in nose) Available 03-16 stations with spacing code 2; Available 02-08 stations with spacing code 4. Not available in combination with isolation options.	S	One Sun Cavity: T-10A (P in nose) See Tech Info for valves.	<table border="1"> <thead> <tr> <th colspan="2">Pressure Isolation</th> </tr> </thead> <tbody> <tr> <td colspan="2">Omit if P isolation not required</td> </tr> <tr> <td>PA...PJ</td> <td>Available with spacing code 2</td> </tr> <tr> <td>PA...PG</td> <td>Available with spacing code 4</td> </tr> </tbody> </table>	Pressure Isolation		Omit if P isolation not required		PA...PJ	Available with spacing code 2	PA...PG	Available with spacing code 4	<table border="1"> <thead> <tr> <th colspan="2">Tank Isolation</th> </tr> </thead> <tbody> <tr> <td colspan="2">Omit if T isolation not required</td> </tr> <tr> <td>TA...TJ</td> <td>Available with spacing code 2</td> </tr> <tr> <td>TA...TG</td> <td>Available with spacing code 4</td> </tr> </tbody> </table>	Tank Isolation		Omit if T isolation not required		TA...TJ	Available with spacing code 2	TA...TG	Available with spacing code 4	<table border="1"> <thead> <tr> <th colspan="2">Cavity & Isolation Combinations</th> </tr> </thead> <tbody> <tr> <td colspan="2">Specify when using a combination of cavity and isolation options. Cavities do not have solenoid clearance.</td> </tr> <tr> <td>L</td> <td>Cavity is located left of the isolation.</td> </tr> <tr> <td>R</td> <td>Cavity is located right of the isolation.</td> </tr> <tr> <td>D</td> <td>Two cavities, one each side of isolation. (Use with cavity option codes C or S only.)</td> </tr> </tbody> </table>	Cavity & Isolation Combinations		Specify when using a combination of cavity and isolation options. Cavities do not have solenoid clearance.		L	Cavity is located left of the isolation.	R	Cavity is located right of the isolation.	D	Two cavities, one each side of isolation. (Use with cavity option codes C or S only.)
Cavity																																								
Omit if cavities not required																																								
C	One Common cavity: No solenoid clearance. C-10-2 (P in nose)																																							
CC	Two Common cavities: With solenoid clearance C-10-2 (P in nose) Available 03-16 stations with spacing code 2; Available 02-08 stations with spacing code 4. Not available in combination with isolation options.																																							
S	One Sun Cavity: T-10A (P in nose) See Tech Info for valves.																																							
Pressure Isolation																																								
Omit if P isolation not required																																								
PA...PJ	Available with spacing code 2																																							
PA...PG	Available with spacing code 4																																							
Tank Isolation																																								
Omit if T isolation not required																																								
TA...TJ	Available with spacing code 2																																							
TA...TG	Available with spacing code 4																																							
Cavity & Isolation Combinations																																								
Specify when using a combination of cavity and isolation options. Cavities do not have solenoid clearance.																																								
L	Cavity is located left of the isolation.																																							
R	Cavity is located right of the isolation.																																							
D	Two cavities, one each side of isolation. (Use with cavity option codes C or S only.)																																							