

Fit fast, hold fast
SAVETIX[®]
 captive screw technology

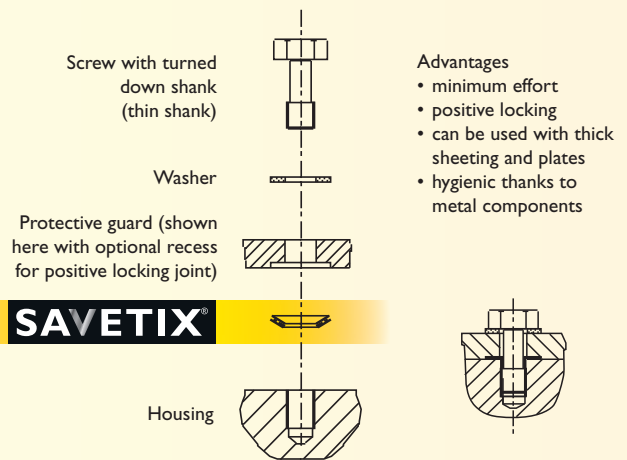
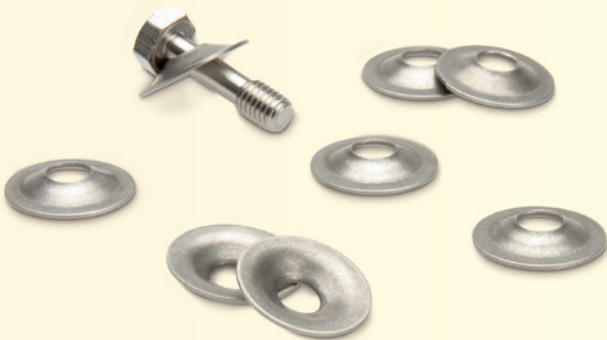
in compliance with
 EU Directive
 2006/42/EC

Since 29.12.2009, the old Machinery Directive 98/37/EC has been superseded by the new EU Machinery Directive (2006/42/EC), which is now binding. So there's no time to lose: those protective guards need fixing to meet Annex 1.4.2.1 of the Directive using Savetix[®] washers and corresponding Savetix[®] screws.



Only manufacturers and importers that have modified their machines according to the Machinery Directive 2006/42/EC Annex 1.4.2.1 can attach the CE sign to them after 2010.

Of all the captive screws available, Savetix[®] is the only product that is designed for more than 30 years of use.

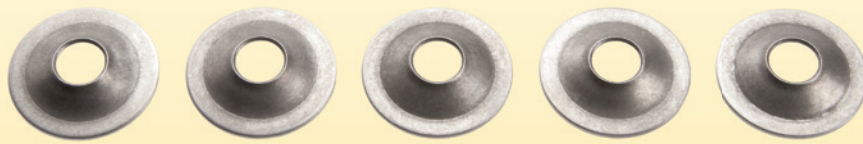
To keep your machine in line with EU Machinery Directive 2006/42/EC, we can supply you with Savetix[®].



Applications of Savetix[®] washers and Savetix[®] screws:

Product used	Application	Characteristics	Advantage
Savetix [®] washers and Savetix [®] screws as a set 	After fitting, the Savetix [®] washer is held by the thinner part of the screw shank, but is fully movable.	Since the screw has considerable freedom of movement, this version is recommended where a machine requires frequent maintenance.	<ul style="list-style-type: none"> • Maximum security. • Maximum convenience. • Fully complies with the EU Directive.
Self-adhesive Savetix [®] washers and Savetix [®] screws as a self-adhesive set 	As above, but with self-adhesive washers.	As above, but this set simplifies simultaneous fitting of many screws. Improves convenience and safety during installation.	<ul style="list-style-type: none"> • Maximum security. • Maximum convenience. • Maximum time-saving. • Fully complies with the EU Directive.

Savetix[®] captive screw technology is available in sizes from M4–M12 but also to customer specifications. In this way we can manufacture the system in the gauge you need even if the size is non-standard. Savetix[®] washers and screws are available in steel and special-purpose materials.



Fit fast, hold fast

SAVETIX®

captive screw technology

in compliance with
EU Directive
2006/42/EC



Savetix® Adhesive

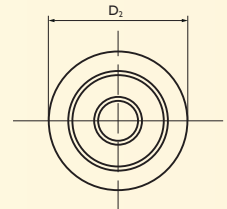
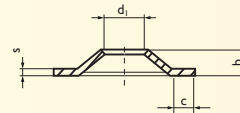
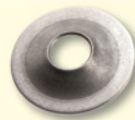
Description:

This glue is a modified, solvent-free acrylate adhesive. It has excellent tack and instantly adheres well to most surfaces including such difficult surfaces as foam and PE or PP film. The glue is free of APEOs.

Technical specifications

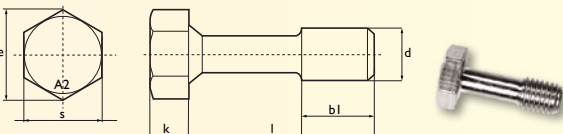
Backing material:	Nonwoven fabric 12 g/m ²
Cover:	Release paper, yellow, 90 g/m ²
Glue application weight:	90 g/m ²
Total thickness:	0.10 mm
Adhesive strength:	min. 16 N / 25 mm ² (contact time: 1 hr)
Temperature resistance:	from -40°C to +100°C

Size charts

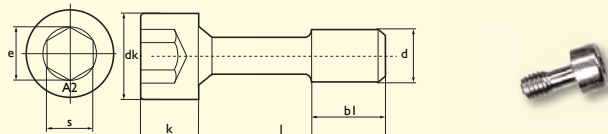


Size (nominal size)	Diameter of hole d ₁ min.	Outer diameter D ₂	Thickness s (nominal size)	Height b max.	Contact area c min.	Material
M4	4.1 mm	19.5 mm	0.4 mm	3.8 mm	2.7 mm	A2 - 1.4301
M5	5.1 mm	20.5 mm	0.5 mm	4.0 mm	2.7 mm	
M6	6.1 mm	21.5 mm	0.6 mm	4.2 mm	2.7 mm	
M8	8.1 mm	25.0 mm	0.8 mm	5.4 mm	2.7 mm	
M10	10.1 mm	27.5 mm	1.0 mm	5.8 mm	2.7 mm	
M12	12.1 mm	29.5 mm	1.2 mm	6.5 mm	2.7 mm	

Captive hex screw with a thin shaft,
hex head in accordance with DIN 933



Captive cheese head screw with a thin shaft,
head in accordance with DIN 912



Size (nominal size) d	Spanner size s	Head height k	Length l	Threaded length bl	Material
M4	7 mm	2.8 mm	To customer specification	To customer specification min. 4 mm	A2 - 1.4301
M5	8 mm	3.5 mm			
M6	10 mm	4.0 mm			
M8	13 mm	5.3 mm			
M10	17 mm	6.4 mm			
M12	19 mm	7.5 mm			

Size (nominal size) d	Spanner size s	dk	Head height k	Length l	Threaded length bl	Material
M4	3 mm	7 mm	4 mm	To customer specification	To customer specification min. 4 mm	A2 - 1.4301
M5	4 mm	8.5 mm	5 mm			
M6	5 mm	10 mm	6 mm			
M8	6 mm	13 mm	8 mm			
M10	8 mm	16 mm	10 mm			
M12	10 mm	18 mm	12 mm			

Also available in other screw geometries.



Rudolf Rafflenbeul
Stahlwarenfabrik GmbH & Co.