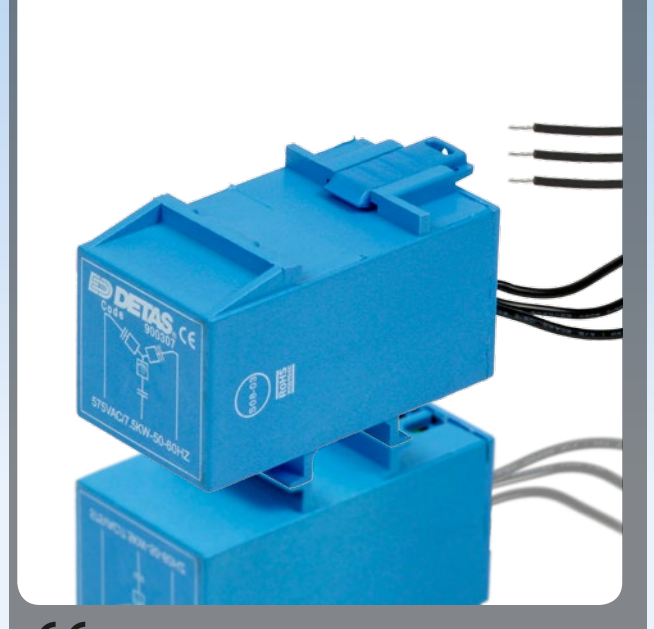


STF

trifase per motori
for threephase motors

Questo filtro per motore viene montato direttamente su barra DIN. Sopra il filtro può poi essere montato il contattore di comando. Disponibile in 2 diverse larghezze (45 e 54 mm), è disponibile per motori aventi potenza massima di 120 kW. Sono disponibili diversi modelli sia con varistori che in versione combinata RC + Varistori. È anche possibile ordinare la stessa versione ma con allacciamento a morsetti (STM).

*This motor filter can be mounted directly on DIN rail.
Moreover the contactor can be placed upon it for a more easy parallel connection of the three cables. Available in two different widths (45 and 54 millimeters), can be used for motors up to 120 kW power. Several models are available with varistors, RC or combined version RC+Varistors. It is also possible to order the same version but with screw terminals (STM).*

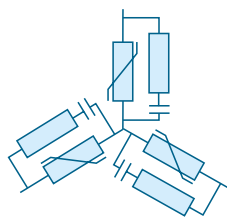


CE

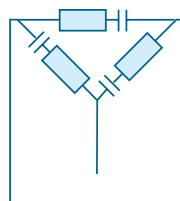
Specifiche tecniche *Specifications*

Frequenza motore - <i>Motor frequency</i>	50÷60 Hz (RC); 10÷400 kHz (VDR)
Potenza massima motore - <i>Max. motor power</i>	Fino a 120 kW - <i>Up to 120 kW</i>
Massimo numero di manovre - <i>Max. n° cycles</i>	1/sec.
Temperatura d'esercizio - <i>Temperature rating</i>	-25°...+85 °C
Custodia - <i>Housing</i>	Policarbonato classe V2 - <i>Polycarbonate V2 class</i>
Riempitivo - <i>Potting material</i>	Resina epossidica, UL94-V0 - <i>Epoxy resin, UL94-V0</i>
Allacciamento - <i>Connections</i>	Cavetto 0,75 mm ² fino a 10 kW, 1,5 mm ² oltre i 10 kW (UL, PVC), L≈150 mm <i>Connecting leadwire 0,75 mm² up to 10 kW, 1,5 mm² over 10 kW (UL, PVC), L≈300 mm</i>
Montaggio - <i>Mounting</i>	Collegamento in parallelo ai contatti da proteggere o in parallelo al carico induttivo <i>Mounted in parallel with the contacts to be protected or in parallel with the inductive load</i>

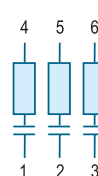
Schema elettrico *Electric schematic*



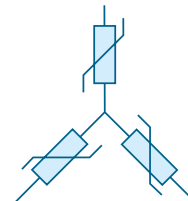
RC/Varistori a stella
RC/Varistors wye connected



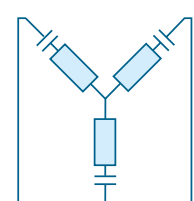
RC a triangolo
RC delta connected



RC singoli
RC



Varistori a stella
Varistors wye connected

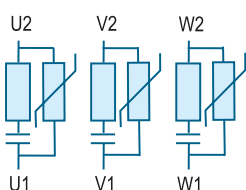


RC a stella
RC wye connected

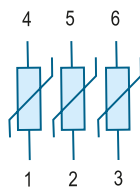
Come ordinare
How to order

Modello Model	Codice prodotto Code	Tensione AC [V] Rated voltage AC [V]	Potenza max. motore [kW] Max. motor power [kW]	Circuito antidisturbo Device type
RC 3/4 KW-STF 575V	900304	3x575	4	RC a stella - RC wye connected
RC 3/7,5 KW-STF 575V	900307	3x575	7,5	RC a stella - RC wye connected
RC 3/10 KW-STF 400V	900310	3x400	10	RC a triangolo - RC delta connected
VDR 3/10 KW-STF 500V	900314	3x500	10	Varistori a stella - Varistors wye connected
VDR 3/10 KW-STF 400V	900316	3x400	10	Varistori a stella - Varistors wye connected
RC 3/10 KW-ST6F 400/575V	900319	3x400/575	10	RC singolo - RC
RC 3/20 KW-ST6F 400/575V	900320	3x400/575	20	RC singolo - RC
RC+VDR 3/20 KW-STF 500V	900324	3x500	20	RC//Varistori a stella - RC//Varistors wye connected
RC 3/20 KW-STF 575V	900325	3x575	20	RC a stella - RC wye connected
VDR 3/30 KW-STF 500V	900330	3x500	30	Varistori a stella - Varistors wye connected
VDR 3/30 KW-STF 400V	900332	3x400	30	Varistori a stella - Varistors wye connected
RC+VDR 3/30 KW-STF 500V	900335	3x500	30	RC//Varistori a stella - RC//Varistors wye connected
RC+VDR 3/30 KW-STF 400V	900336	3x400	30	RC//Varistori a stella - RC//Varistors wye connected
RC+VDR 3/1/4 KW-STF 400/24V	900345	3x400	4	RC//Varistori singoli - RC//Varistors
RC+VDR 3/1/4 KW-STF 400/110V	900350	3x400	4	RC//Varistori singoli - RC//Varistors
RC+VDR 3/30 KW-ST6F 500V	900365	3x500	30	RC//Varistori singoli - RC//Varistors
VDR 3/75 KW-STF 500V	900374	3x500	75	Varistori a stella - Varistors wye connected
VDR 3/75 KW-STF 400V	900376	3x400	75	Varistori a stella - Varistors wye connected
VDR 3/75 KW-STF 400V	900390	3x400	75	Varistori singoli - Varistors
RC+VDR 3/120 KW-ST6F 500V	900395	3x500	120	RC//Varistori singoli - RC//Varistors
RC+VDR 3/120 KW-ST6F 400V	900396	3x400	120	RC//Varistori singoli - RC//Varistors

Schema elettrico
Electric schematic

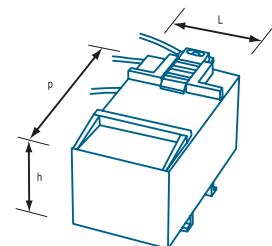


RC//Varistori singoli
RC//Varistors



Varistori singoli
Varistors

Dimensioni [mm]
Dimensions [mm]



L=45; h=54; p=83 (≤10kW)
L=54; h=54; p=83 (>10kW)