

## RL 70 V / RL 70 E (WITH INTEGRATED BALLAST)

### EVERYTHING IN ONE PREMIUM PACKAGE.

Maximum, wide-range illumination of the inside of the machine – maybe in a glare-free design? The established answers to this are RL 70 V and RL 70 E. Quite simply because these tube luminaires do not require an external ballast and are also not afraid of the toughest application conditions.

- With high luminous power and modern energy-saving technology
- In accordance with EN-1837 glare-free variants with parabolic louvers
- Variants with integrated conventional or electronic ballast
- Extremely long life and reliability thanks to premium materials
- Bayonet style sidepart of fiberglass-reinforced polyamide
- High system of protection
- Resistance-tested with many cooling agents and lubricants

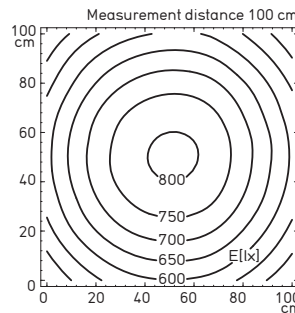
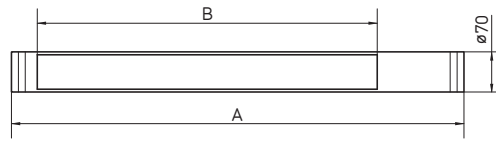




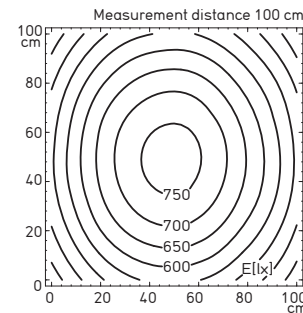
RL 70 V/RL 70 E in design without parabolic louver

**Features at a glance**

- TC-L, TC-S, TC-SEL compact fluorescent lamp or T16, T26 fluorescent lamp(s)
- Color temperature neutral white 4,000 K
- Direct beam or glare-free thanks to aluminumized parabolic louver
- Luminaire body of clear acrylic or borosilicate glass
- Integration by various brackets from the accessories
- Without switch
- System of protection IP67; class of protection I
- Supplied without mains lead with screwed cable gland
- Various brackets as accessories



Illuminance based on the example 2 x 39 W without parabolic louver



Illuminance based on the example 2 x 39 W with parabolic louver

Integrated machine luminaires



Surface-mounted luminaires



Tube luminaires



**RL 70 V WITH INTEGRATED CONVENTIONAL BALLAST**

230 V, 50 HZ

FITTED WITH	OPERATING DEVICE	DIMENSIONS		SPECIAL FEATURE	$E_m / E_{max}^*$	MODEL	ORDER NO.
1 x 11 W TC-S	Conventional ballast integr.	A=447 mm	B=198 mm	Acrylic	135/171 lx <sup>1</sup>	RL70CV-111	111 571 000 - 000 605 18
1 x 11 W TC-S	Conventional ballast integr.	A=447 mm	B=198 mm	Acrylic; parabolic louver	120/157 lx <sup>1</sup>	RL70CV-111	111 571 010 - 000 605 14
1 x 11 W TC-S	Conventional ballast integr.	A=447 mm	B=198 mm	Borosilicate glass	135/171 lx <sup>1</sup>	RL70CV-111	111 571 001 - 000 605 17
1 x 11 W TC-S	Conventional ballast integr.	A=447 mm	B=198 mm	Borosilicate glass; parabolic louver	120/157 lx <sup>1</sup>	RL70CV-111	111 571 011 - 000 605 16
1 x 18 W TC-L	Conventional ballast integr.	A=564 mm	B=198 mm	Acrylic	160/205 lx <sup>1</sup>	RL70CV-118	111 301 000 - 000 566 04
1 x 18 W TC-L	Conventional ballast integr.	A=564 mm	B=198 mm	Acrylic; parabolic louver	154/211 lx <sup>1</sup>	RL70CV-118	111 301 010 - 000 566 39
1 x 18 W TC-L	Conventional ballast integr.	A=564 mm	B=198 mm	Borosilicate glass	160/205 lx <sup>1</sup>	RL70CV-118	111 301 001 - 000 566 40
1 x 18 W TC-L	Conventional ballast integr.	A=564 mm	B=198 mm	Borosilicate glass; parabolic louver	154/211 lx <sup>1</sup>	RL70CV-118	111 301 011 - 000 566 05
1 x 18 W T26	Conventional ballast integr.	A=975 mm	B=592 mm	Acrylic	207/262 lx <sup>1</sup>	RL70V-118	111 341 000 - 000 568 86
1 x 18 W T26	Conventional ballast integr.	A=975 mm	B=592 mm	Acrylic; parabolic louver	172/222 lx <sup>1</sup>	RL70V-118	111 341 010 - 000 568 87
1 x 18 W T26	Conventional ballast integr.	A=975 mm	B=592 mm	Borosilicate glass	207/262 lx <sup>1</sup>	RL70V-118	111 341 001 - 000 568 88
1 x 18 W T26	Conventional ballast integr.	A=975 mm	B=592 mm	Borosilicate glass; parabolic louver	172/222 lx <sup>1</sup>	RL70V-118	111 341 011 - 000 568 89
1 x 24 W TC-L	Conventional ballast integr.	A=639 mm	B=273 mm	Acrylic	259/333 lx <sup>1</sup>	RL70CV-124	111 311 000 - 000 565 79
1 x 24 W TC-L	Conventional ballast integr.	A=639 mm	B=273 mm	Acrylic; parabolic louver	220/313 lx <sup>1</sup>	RL70CV-124	111 311 010 - 000 566 41
1 x 24 W TC-L	Conventional ballast integr.	A=639 mm	B=273 mm	Borosilicate glass	259/333 lx <sup>1</sup>	RL70CV-124	111 311 001 - 000 565 76
1 x 24 W TC-L	Conventional ballast integr.	A=639 mm	B=273 mm	Borosilicate glass; parabolic louver	220/313 lx <sup>1</sup>	RL70CV-124	111 311 011 - 000 565 80
1 x 36 W TC-L	Conventional ballast integr.	A=747 mm	B=394 mm	Acrylic	358/461 lx <sup>1</sup>	RL70CV-136	111 321 000 - 000 613 84
1 x 36 W TC-L	Conventional ballast integr.	A=747 mm	B=394 mm	Acrylic; parabolic louver	342/463 lx <sup>1</sup>	RL70CV-136	111 321 010 - 000 571 02
1 x 36 W TC-L	Conventional ballast integr.	A=747 mm	B=394 mm	Borosilicate glass	358/461 lx <sup>1</sup>	RL70CV-136	111 321 001 - 000 571 04
1 x 36 W TC-L	Conventional ballast integr.	A=747 mm	B=394 mm	Borosilicate glass; parabolic louver	342/463 lx <sup>1</sup>	RL70CV-136	111 321 011 - 000 571 03
1 x 36 W T26	Conventional ballast integr.	A=1581 mm	B=1188 mm	Acrylic	410/490 lx <sup>1</sup>	RL70V-136	111 351 000 - 000 568 95
1 x 36 W T26	Conventional ballast integr.	A=1581 mm	B=1188 mm	Acrylic; parabolic louver	348/420 lx <sup>1</sup>	RL70V-136	111 351 010 - 000 568 94
1 x 36 W T26	Conventional ballast integr.	A=1581 mm	B=1188 mm	Borosilicate glass	410/490 lx <sup>1</sup>	RL70V-136	111 351 001 - 000 568 97
1 x 36 W T26	Conventional ballast integr.	A=1581 mm	B=1188 mm	Borosilicate glass; parabolic louver	348/420 lx <sup>1</sup>	RL70V-136	111 351 011 - 000 568 96
1 x 58 W T26	Conventional ballast integr.	A=1967 mm	B=1503 mm	Acrylic	425/620 lx <sup>2</sup>	RL70V-158	111 361 000 - 000 568 99
1 x 58 W T26	Conventional ballast integr.	A=1967 mm	B=1503 mm	Acrylic; parabolic louver	425/620 lx <sup>2</sup>	RL70V-158	111 361 0 10 - 000 568 98
1 x 58 W T26	Conventional ballast integr.	A=1967 mm	B=1503 mm	Borosilicate glass	425/620 lx <sup>2</sup>	RL70V-158	111 361 001 - 000 569 01
1 x 58 W T26	Conventional ballast integr.	A=1967 mm	B=1503 mm	Borosilicate glass; parabolic louver	425/620 lx <sup>2</sup>	RL70V-158	111 361 011 - 000 569 00

\* $E_m$  = medium illuminance;  $E_{max}$  = maximum illuminance

<sup>1</sup> Measuring range 100 cm x 100 cm/Measuring distance 100 cm; <sup>2</sup> Measuring range 100 cm x 200 cm/Measuring distance 100 cm

## RL 70 E WITH INTEGRATED ELECTRONIC BALLAST

### 230 – 240 V, 50/60 HZ

FITTED WITH	OPERATING DEVICE	DIMENSIONS		SPECIAL FEATURE	$E_m / E_{max}^*$	MODEL	ORDER NO.
1 x 11 W TC-SEL	Integr. electronic ballast	A=483 mm	B=198 mm	Acrylic	135/171 lx <sup>1</sup>	RL70CE-111	111 921 000 - 000 637 57
1 x 11 W TC-SEL	Integr. electronic ballast	A=483 mm	B=198 mm	Acrylic; parabolic louver	120/157 lx <sup>1</sup>	RL70CE-111	111 921 010 - 000 637 56
1 x 11 W TC-SEL	Integr. electronic ballast	A=483 mm	B=198 mm	Borosilicate glass	120/157 lx <sup>1</sup>	RL70CE-111	111 921 001 - 000 637 59
1 x 11 W TC-SEL	Integr. electronic ballast	A=483 mm	B=198 mm	Borosilicate glass; parabolic louver	120/157 lx <sup>1</sup>	RL70CE-111	111 921 011 - 000 637 58
1 x 18 W T26	Integr. electronic ballast	A=916 mm	B=597 mm	Acrylic	207/262 lx <sup>1</sup>	RL70E-118	111 841 000 - 000 679 40
1 x 18 W T26	Integr. electronic ballast	A=916 mm	B=597 mm	Acrylic; parabolic louver	172/222 lx <sup>1</sup>	RL70E-118	111 841 010 - 000 688 91
1 x 18 W T26	Integr. electronic ballast	A=916 mm	B=597 mm	Borosilicate glass	207/262 lx <sup>1</sup>	RL70E-118	111 841 001 - 000 687 31
1 x 18 W T26	Integr. electronic ballast	A=916 mm	B=597 mm	Borosilicate glass; parabolic louver	172/222 lx <sup>1</sup>	RL70E-118	111 841 011 - 000 868 78
1 x 36 W T26	Integr. electronic ballast	A=1724 mm	B=1200 mm	Acrylic	410/490 lx <sup>1</sup>	RL70E-136	111 821 000 - 000 661 92
1 x 36 W T26	Integr. electronic ballast	A=1724 mm	B=1200 mm	Acrylic; parabolic louver	348/420 lx <sup>1</sup>	RL70E-136	111 821 010 - 000 695 45
1 x 36 W T26	Integr. electronic ballast	A=1724 mm	B=1200 mm	Borosilicate glass	410/490 lx <sup>1</sup>	RL70E-136	111 821 001 - 000 632 28
1 x 36 W T26	Integr. electronic ballast	A=1724 mm	B=1200 mm	Borosilicate glass; parabolic louver	348/420 lx <sup>1</sup>	RL70E-136	111 821 011 - 000 851 07
1 x 58 W T26	Integr. electronic ballast	A=2027 mm	B=1548 mm	Acrylic	497/693 lx <sup>2</sup>	RL70E-158	111 911 000 - 000 651 95
1 x 58 W T26	Integr. electronic ballast	A=2027 mm	B=1548 mm	Acrylic; parabolic louver	425/620 lx <sup>2</sup>	RL70E-158	111 911 010 - 000 695 46
1 x 58 W T26	Integr. electronic ballast	A=2027 mm	B=1548 mm	Borosilicate glass	497/693 lx <sup>2</sup>	RL70E-158	111 911 001 - 000 651 94
1 x 58 W T26	Integr. electronic ballast	A=2027 mm	B=1548 mm	Borosilicate glass; parabolic louver	425/620 lx <sup>2</sup>	RL70E-158	111 911 011 - 000 651 96

### 100/120/230 V, 50/60 HZ

FITTED WITH	OPERATING DEVICE	DIMENSIONS		SPECIAL FEATURE	$E_m / E_{max}^*$	MODEL	ORDER NO.
1 x 18 W TC-L	Integr. electronic ballast	A=486 mm	B=198 mm	Acrylic	160/205 lx <sup>1</sup>	RL70CE-118	111 371 000 - 000 570 24
1 x 18 W TC-L	Integr. electronic ballast	A=486 mm	B=198 mm	Acrylic; parabolic louver	154/211 lx <sup>1</sup>	RL70CE-118	111 371 010 - 000 570 23
1 x 18 W TC-L	Integr. electronic ballast	A=486 mm	B=198 mm	Borosilicate glass	160/205 lx <sup>1</sup>	RL70CE-118	111 371 001 - 000 570 26
1 x 18 W TC-L	Integr. electronic ballast	A=486 mm	B=198 mm	Borosilicate glass; parabolic louver	154/211 lx <sup>1</sup>	RL70CE-118	111 371 011 - 000 570 25
1 x 24 W TC-L	Integr. electronic ballast	A=572 mm	B=293 mm	Acrylic	259/333 lx <sup>1</sup>	RL70CE-124	111 381 002 - 000 570 29
1 x 24 W TC-L	Integr. electronic ballast	A=572 mm	B=293 mm	Acrylic; parabolic louver	220/313 lx <sup>1</sup>	RL70CE-124	111 381 004 - 000 570 28
1 x 24 W TC-L	Integr. electronic ballast	A=572 mm	B=293 mm	Borosilicate glass	259/333 lx <sup>1</sup>	RL70CE-124	111 381 003 - 000 570 31
1 x 24 W TC-L	Integr. electronic ballast	A=572 mm	B=293 mm	Borosilicate glass; parabolic louver	220/313 lx <sup>1</sup>	RL70CE-124	111 381 005 - 000 570 30

### 220 – 240 V, 50/60 HZ

FITTED WITH	OPERATING DEVICE	DIMENSIONS		SPECIAL FEATURE	$E_m / E_{max}^*$	MODEL	ORDER NO.
1 x 36 W TC-L	Integr. electronic ballast	A=827 mm	B=363 mm	Acrylic	337/437 lx <sup>1</sup>	RL70CE-136	112 009 000 - 000 661 19
1 x 36 W TC-L	Integr. electronic ballast	A=827 mm	B=363 mm	Acrylic; parabolic louver	327/450 lx <sup>1</sup>	RL70CE-136	112 009 010 - 000 661 17
1 x 36 W TC-L	Integr. electronic ballast	A=827 mm	B=363 mm	Borosilicate glass	337/437 lx <sup>1</sup>	RL70CE-136	112 009 001 - 000 661 18
1 x 36 W TC-L	Integr. electronic ballast	A=827 mm	B=363 mm	Borosilicate glass; parabolic louver	327/450 lx <sup>1</sup>	RL70CE-136	112 009 011 - 000 661 16
2 x 39 W T16	Integr. electronic ballast	A=1475 mm	B=829 mm	Acrylic	641/805 lx <sup>1</sup>	RL70E-239	112 501 000 - 000 975 72
2 x 39 W T16	Integr. electronic ballast	A=1475 mm	B=829 mm	Acrylic; parabolic louver	577/765 lx <sup>1</sup>	RL70E-239	112 501 010 - 000 975 74
2 x 39 W T16	Integr. electronic ballast	A=1475 mm	B=829 mm	Borosilicate glass	641/805 lx <sup>1</sup>	RL70E-239	112 501 001 - 000 975 73
2 x 39 W T16	Integr. electronic ballast	A=1475 mm	B=829 mm	Borosilicate glass; parabolic louver	577/765 lx <sup>1</sup>	RL70E-239	112 501 011 - 000 975 75
2 x 54 W T16	Integr. electronic ballast	A=1744 mm	B=1048 mm	Borosilicate glass	923/1427 lx <sup>2</sup>	RL70E-254	112 180 001 - 000 863 00
2 x 54 W T16	Integr. electronic ballast	A=1744 mm	B=1048 mm	Borosilicate glass; parabolic louver	698/1185 lx <sup>2</sup>	RL70E-254	112 180 011 - 000 863 01

### 110 – 230 V, 50/60 HZ



FITTED WITH	OPERATING DEVICE	DIMENSIONS		SPECIAL FEATURE	$E_m / E_{max}^*$	MODEL	ORDER NO.
1 x 40 W TC-L	Integr. electronic ballast	A=1040 mm	B=530 mm	Borosilicate glass	442/563 lx <sup>1</sup>	RL70CE-140	112 331 003 - 000 307 81
1 x 40 W TC-L	Integr. electronic ballast	A=1040 mm	B=530 mm	Borosilicate glass; parabolic louver	400/552 lx <sup>1</sup>	RL70CE-140	112 331 005 - 000 307 75

\* $E_m$  = medium illuminance;  $E_{max}$  = maximum illuminance

<sup>1</sup> Measuring range 100 cm x 100 cm/Measuring distance 100 cm; <sup>2</sup> Measuring range 100 cm x 200 cm/Measuring distance 100 cm



Integrated  
machine  
luminaires



Surface-  
mounted  
luminaires



Tube  
luminaires



### 24 VDC

FITTED WITH	OPERATING DEVICE	DIMENSIONS		SPECIAL FEATURE	$E_m / E_{max}^*$	MODEL	ORDER NO.
1 x 18 W TC-L	Integr. electronic ballast	A=524 mm	B=212 mm	Acrylic	159/205 lx <sup>1</sup>	RL70CE-118	112 370 000 - 000 841 57
1 x 18 W TC-L	Integr. electronic ballast	A=524 mm	B=212 mm	Acrylic; parabolic louver	152/208 lx <sup>1</sup>	RL70CE-118	112 370 010 - 000 841 68
1 x 18 W TC-L	Integr. electronic ballast	A=524 mm	B=212 mm	Borosilicate glass	159/205 lx <sup>1</sup>	RL70CE-118	112 370 001 - 000 841 61
1 x 18 W TC-L	Integr. electronic ballast	A=524 mm	B=212 mm	Borosilicate glass; parabolic louver	152/208 lx <sup>1</sup>	RL70CE-118	112 370 011 - 000 841 69
1 x 18 W T26	Integr. electronic ballast	A=919 mm	B=597 mm	Acrylic	207/262 lx <sup>1</sup>	RL70E-118	111 690 000 - 000 634 06
1 x 18 W T26	Integr. electronic ballast	A=919 mm	B=597 mm	Acrylic; parabolic louver	172/222 lx <sup>1</sup>	RL70E-118	111 690 010 - 000 674 71
1 x 18 W T26	Integr. electronic ballast	A=919 mm	B=597 mm	Borosilicate glass	207/262 lx <sup>1</sup>	RL70E-118	111 690 001 - 000 634 08
1 x 18 W T26	Integr. electronic ballast	A=919 mm	B=597 mm	Borosilicate glass; parabolic louver	172/222 lx <sup>1</sup>	RL70E-118	111 690 011 - 000 634 07
1 x 24 W TC-L	Integr. electronic ballast	A=639 mm	B=317 mm	Acrylic	259/333 lx <sup>1</sup>	RL70CE-124	111 440 000 - 000 571 73
1 x 24 W TC-L	Integr. electronic ballast	A=639 mm	B=317 mm	Acrylic; parabolic louver	220/313 lx <sup>1</sup>	RL70CE-124	111 440 010 - 000 571 74
1 x 24 W TC-L	Integr. electronic ballast	A=639 mm	B=317 mm	Borosilicate glass	259/333 lx <sup>1</sup>	RL70CE-124	111 440 001 - 000 571 75
1 x 24 W TC-L	Integr. electronic ballast	A=639 mm	B=317 mm	Borosilicate glass; parabolic louver	220/313 lx <sup>1</sup>	RL70CE-124	111 440 011 - 000 571 76
1 x 36 W TC-L	Integr. electronic ballast	A=747 mm	B=364 mm	Acrylic	337/437 lx <sup>1</sup>	RL70CE-136	111 450 000 - 000 640 46
1 x 36 W TC-L	Integr. electronic ballast	A=747 mm	B=364 mm	Acrylic; parabolic louver	327/450 lx <sup>1</sup>	RL70CE-136	111 450 010 - 000 644 22
1 x 36 W TC-L	Integr. electronic ballast	A=747 mm	B=364 mm	Borosilicate glass	337/437 lx <sup>1</sup>	RL70CE-136	111 450 001 - 000 571 77
1 x 36 W TC-L	Integr. electronic ballast	A=747 mm	B=364 mm	Borosilicate glass; parabolic louver	271/352 lx <sup>1</sup>	RL70CE-136	111 450 011 - 000 571 78
1 x 36 W T26	Integr. electronic ballast	A=1532 mm	B=1210 mm	Acrylic	410/490 lx <sup>1</sup>	RL70E-136	111 730 000 - 000 599 87
1 x 36 W T26	Integr. electronic ballast	A=1532 mm	B=1210 mm	Acrylic; parabolic louver	348/420 lx <sup>1</sup>	RL70E-136	111 730 010 - 000 599 90
1 x 36 W T26	Integr. electronic ballast	A=1532 mm	B=1210 mm	Borosilicate glass	410/490 lx <sup>1</sup>	RL70E-136	111 730 001 - 000 599 91
1 x 36 W T26	Integr. electronic ballast	A=1532 mm	B=1210 mm	Borosilicate glass; parabolic louver	348/420 lx <sup>1</sup>	RL70E-136	111 730 011 - 000 599 88
1 x 58 W T26	Integr. electronic ballast	A=1850 mm	B=1541 mm	Acrylic	497/693 lx <sup>2</sup>	RL70E-158	112 170 000 - 000 867 80
1 x 58 W T26	Integr. electronic ballast	A=1850 mm	B=1541 mm	Acrylic; parabolic louver	425/620 lx <sup>2</sup>	RL70E-158	112 170 010 - 000 887 53
1 x 58 W T26	Integr. electronic ballast	A=1850 mm	B=1541 mm	Borosilicate glass	497/693 lx <sup>2</sup>	RL70E-158	112 170 001 - 000 855 33
1 x 58 W T26	Integr. electronic ballast	A=1850 mm	B=1541 mm	Borosilicate glass; parabolic louver	425/620 lx <sup>2</sup>	RL70E-158	112 170 011 - 000 865 01

### 24 VAC, 50/60 HZ

FITTED WITH	OPERATING DEVICE	DIMENSIONS		SPECIAL FEATURE	$E_m / E_{max}^*$	MODEL	ORDER NO.
1 x 18 W TC-L	Integr. electronic ballast	A=524 mm	B=212 mm	Acrylic	159/205 lx <sup>1</sup>	RL70CE-118	112 369 000 - 000 841 94
1 x 18 W TC-L	Integr. electronic ballast	A=524 mm	B=212 mm	Acrylic; parabolic louver	152/208 lx <sup>1</sup>	RL70CE-118	112 369 010 - 000 841 95
1 x 18 W TC-L	Integr. electronic ballast	A=524 mm	B=212 mm	Borosilicate glass	159/205 lx <sup>1</sup>	RL70CE-118	112 369 001 - 000 842 04
1 x 18 W TC-L	Integr. electronic ballast	A=524 mm	B=212 mm	Borosilicate glass; parabolic louver	152/208 lx <sup>1</sup>	RL70CE-118	112 369 011 - 000 841 97
1 x 18 W T26	Integr. electronic ballast	A=919 mm	B=597 mm	Acrylic	207/262 lx <sup>1</sup>	RL70E-118	111 650 000 - 000 630 29
1 x 18 W T26	Integr. electronic ballast	A=919 mm	B=597 mm	Acrylic; parabolic louver	172/222 lx <sup>1</sup>	RL70E-118	111 650 010 - 000 815 94
1 x 18 W T26	Integr. electronic ballast	A=919 mm	B=597 mm	Borosilicate glass	207/262 lx <sup>1</sup>	RL70E-118	111 650 001 - 000 630 30
1 x 18 W T26	Integr. electronic ballast	A=919 mm	B=597 mm	Borosilicate glass; parabolic louver	172/222 lx <sup>1</sup>	RL70E-118	111 650 011 - 000 630 31
1 x 24 W TC-L	Integr. electronic ballast	A=639 mm	B=317 mm	Acrylic	259/333 lx <sup>1</sup>	RL70CE-124	111 410 000 - 000 571 56
1 x 24 W TC-L	Integr. electronic ballast	A=639 mm	B=317 mm	Acrylic; parabolic louver	220/313 lx <sup>1</sup>	RL70CE-124	111 410 010 - 000 571 57
1 x 24 W TC-L	Integr. electronic ballast	A=639 mm	B=317 mm	Borosilicate glass	259/333 lx <sup>1</sup>	RL70CE-124	111 410 001 - 000 571 58
1 x 24 W TC-L	Integr. electronic ballast	A=639 mm	B=317 mm	Borosilicate glass; parabolic louver	220/313 lx <sup>1</sup>	RL70CE-124	111 410 011 - 000 571 59
1 x 36 W TC-L	Integr. electronic ballast	A=747 mm	B=364 mm	Acrylic	337/437 lx <sup>1</sup>	RL70CE-136	111 420 000 - 000 571 61
1 x 36 W TC-L	Integr. electronic ballast	A=747 mm	B=364 mm	Acrylic; parabolic louver	327/450 lx <sup>1</sup>	RL70CE-136	111 420 010 - 000 571 62
1 x 36 W TC-L	Integr. electronic ballast	A=747 mm	B=364 mm	Borosilicate glass	337/437 lx <sup>1</sup>	RL70CE-136	111 420 001 - 000 571 64
1 x 36 W TC-L	Integr. electronic ballast	A=747 mm	B=364 mm	Borosilicate glass; parabolic louver	327/450 lx <sup>1</sup>	RL70CE-136	111 420 011 - 000 571 67
1 x 36 W T26	Integr. electronic ballast	A=1532 mm	B=1210 mm	Acrylic	410/490 lx <sup>1</sup>	RL70E-136	111 720 000 - 000 599 78
1 x 36 W T26	Integr. electronic ballast	A=1532 mm	B=1210 mm	Acrylic; parabolic louver	348/420 lx <sup>1</sup>	RL70E-136	111 720 010 - 000 599 77
1 x 36 W T26	Integr. electronic ballast	A=1532 mm	B=1210 mm	Borosilicate glass	410/490 lx <sup>1</sup>	RL70E-136	111 720 001 - 000 599 80
1 x 36 W T26	Integr. electronic ballast	A=1532 mm	B=1210 mm	Borosilicate glass; parabolic louver	348/420 lx <sup>1</sup>	RL70E-136	111 720 011 - 000 599 79

\* $E_m$  = medium illuminance;  $E_{max}$  = maximum illuminance

<sup>1</sup> Measuring range 100 cm x 100 cm/Measuring distance 100 cm; <sup>2</sup> Measuring range 100 cm x 200 cm/Measuring distance 100 cm