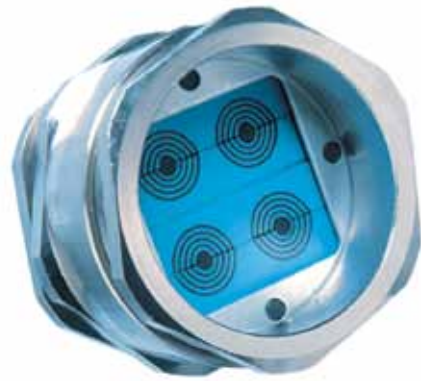


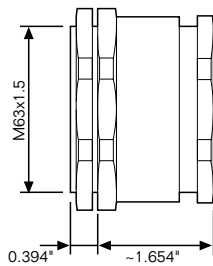
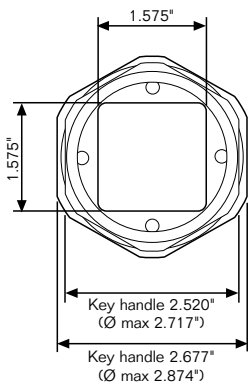
Roxtec gland – RG M63



The Roxtec gland, RG M63, combines the traditional gland technique with the unique Roxtec technology for flexibility and adaptability.

The result is a new generation of glands with improved capacity and functionality. RG M63 has a compact design that makes it well

suited for small areas. It can seal between one and nine cables with diameters ranging from 0.138" to 1.280".

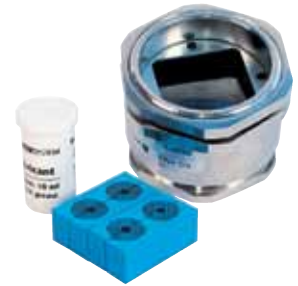


Type:	Roxtec Gland M63
External dimension:	Ø 2.874" x ~2.047"
Packing space* (mm):	40 x 40
Hole dimension in cabinet:	Ø 2.500"-2.520"
Material:	Nickel plated brass, PA 6, galvanized mild steel, EPDM rubber
Rating:	UL/NEMA 4, 4x, 12 and 13, CSA 4, 4x, 12 and 13 IP 66/67 according to IEC 60529

*Packing space is the available space inside each frame for sealing modules and cables/pipes.

- Max thickness of cabinet wall is 0.158" with lock nut.
- The RG M63 is also available in stainless steel.
- Recommended knockout punch: Greenlee hole punch (size 2.52"/ISO 63)

Roxtec Gland M63 kits

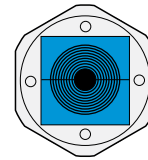


Complete solutions for your projects

RG M63 is designed with three different module configurations. Each version is delivered as a complete sealing kit.

RG M63/1

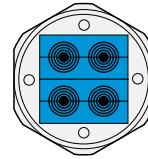
Accommodates one cable with a diameter range from 0.374" to 1.280".



1 pc GM 40 10-32

RG M63/4

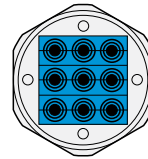
Accommodates up to four cables with a diameter range from 0.138" to 0.650".



2 pcs GM 20w40

RG M63/9

Accommodates up to nine cables with a diameter range from 0.138" to 0.414".



3 pcs GM 13.3w40

Roxtec Gland M63 conduit adapter

The RG M63 adapter allows the gland to thread into one end, while the other end threads directly into 2 inch NPT. Depending on the version of RG M63 used, up to 9 cables can be sealed inside a 2-inch conduit. For additional adapter/conduit sizes, please contact your local Roxtec representative.



Roxtec Gland M63 tools

64 and 68 mm wrenches to simplify assembly and disassembly.

