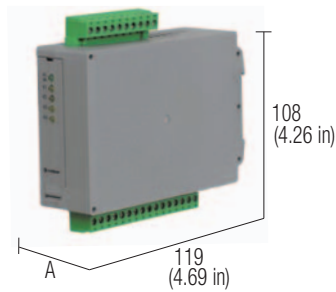
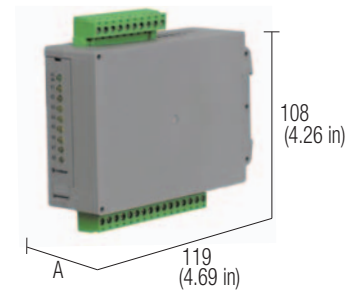


# Super compact 24 Vac/dc relay modules universal control voltage

- 3 kV I/O isolation
- 1 kV isolation between output contact
- Fast connection with pluggable terminals
- DC and AC control voltage
- Positive or negative control voltage



A = 22.5 mm (0.88 in) CR version, 35 mm (1.38 in) CRE version

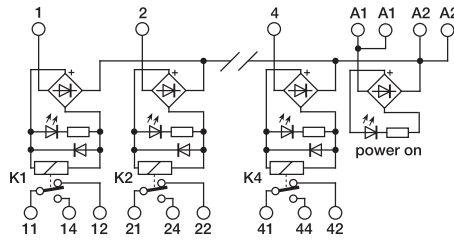


A = 22.5 mm (0.88 in) CR version, 35 mm (1.38 in) CRE version

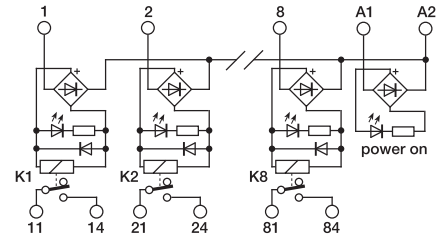
## NOTES

The height dimension includes 35 mm DIN rail.  
 (1) Relay model is not binding, they may be modified without prior warning. The technical data shown here is to be considered typical.  
**CR4-1** and **CRE4-1**: relay module with SPDT, inputs and outputs with pluggable terminals.  
**CR8-1** and **CRE8-1**: 8 relay module with SPST (NO), inputs and outputs with pluggable terminals.

## BLOCK DIAGRAM



## BLOCK DIAGRAM



## VERSIONS

Pluggable relay  
 Fixed relay

Cat. No. XCRE41

Cat. No. XCR4

CRE4-1

CR4-1

Cat. No. XCRE81

Cat. No. XCR81

CRE8-1

CR8-1

## INPUT TECHNICAL DATA

Rated voltage	24 Vac/dc $\pm$ 10%
Rated current (1 channel)	16 mA $\pm$ 10%
Turn ON time	7 ms
Turn OFF time	3 ms
Protection circuit	damping diode and bridge rectifier

Rated voltage	24 Vac/dc $\pm$ 10%
Rated current (1 channel)	16 mA $\pm$ 10%
Turn ON time	7 ms
Turn OFF time	3 ms
Protection circuit	damping diode and bridge rectifier

## OUTPUT TECHNICAL DATA

Type and number of contacts	SPDT AgNiO per 4 relé
Nominal load (resistive)	8 A / 250 Vac
Current breaking power	2000 VA
Current of the fuse max.	—

Type and number of contacts	SPST(NO) per 8 relay
Nominal load (resistive)	8 A / 250 Vac
Current breaking power	2000 VA
Current of the fuse max.	—

## GENERAL TECHNICAL DATA

Operating temperature range	-10...+50°C
Coil/contact isolation	2.5 kVac / 60 s
Isolation between output terminals	1 kVac / 60 s (between open contact)
Protection degree	IP 20 IEC 529, EN60529
Overtoltage category / Pollution degree	III / 2
Reference Standard	IEC 664-1, DIN VDE 0110.1
Status display	green LED / yellow LED
Connection terminal	2.5 mm <sup>2</sup> fixed screw type
Housing material	UL94V-0 plastic material
Approx. weight	143 g (5.05 oz) (180 g [6.35 oz] pluggable version)
Mounting information	vertical on rail adjacent without gap

Operating temperature range	-10...+50°C
Coil/contact isolation	3 kVac / 60 s
Isolation between output terminals	1 kVac / 60 s (between open contact)
Protection degree	IP 20 IEC 529, EN60529
Overtoltage category / Pollution degree	III / 2
Reference Standard	IEC 664-1, DIN VDE 0110.1
Status display	green LED / yellow LED
Connection terminal	2.5 mm <sup>2</sup> fixed screw type
Housing material	UL94V-0 plastic material
Approx. weight	199 g (7.02 oz) (250 g [8.83 oz] pluggable version)
Mounting information	vertical on rail adjacent without gap

## MOUNTING ACCESSORIES

Mounting rail type according to IEC60715/TH35	PR/3/AC, PR/3/AC/ZB, PR/3/AS, PR/3/AS/ZB
Mounting rail type according to IEC60715/G32	PR/DIN/AC - PR/DIN/AS - PR/DIN/AL
Replacement relay (1)	Cat. No. 8904042
Screw type jumper	—
red	—
white	—
blue	—

Mounting rail type according to IEC60715/TH35	PR/3/AC, PR/3/AC/ZB, PR/3/AS, PR/3/AS/ZB
Mounting rail type according to IEC60715/G32	PR/DIN/AC - PR/DIN/AS - PR/DIN/AL
Replacement relay (1)	Cat. No. 8904042
Screw type jumper	—
red	—
white	—
blue	—