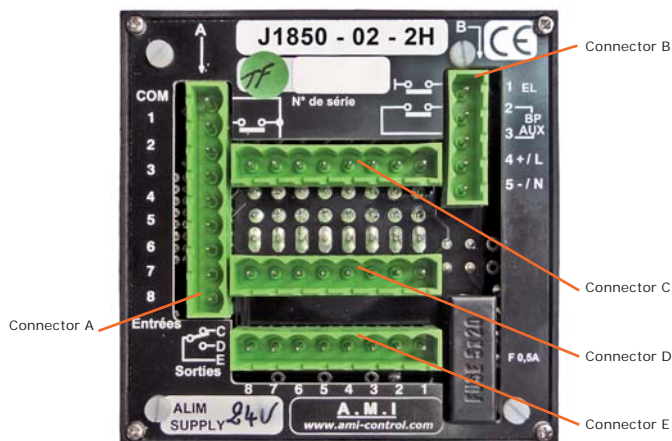


DIN 96 x 96 format



Indicator display panel with selectable inputs

NO/NC selection
Fixed or blinking display
OUTPUT relay per input



USE :

- Allows local display (for example in «Substation») of different information types (Run / Stop / Alert) when the acoustic alarm and the reset are not needed.
- Allows better identification of alarms (blinking LED).
- Accepts inputs in NO/NC contact (to avoid relaying).
- Allows informations clustering for processing with supervisor.
- Displays with a choice of various colours per LED : **Green, Yellow, Red, Blue** (easily unpluggable LEDs).

For each input :

- Selection of direction of input contact (NO = Normally Open, NC = Normally Closed).
- Selection of type of display: Blinking or fixed.
- 8 relays with IO/C contact for remote transfer of each channel
- separately (depending on chosen model).

For the unit :

- 8 unpluggable LEDs for easy colour change.
- «LEDs Test» button on front + input for external button.
- Auxiliary button on front brought out to terminals.
- One green LED for supply voltage presence.
- Unpluggable screw terminals block.

OPERATION :

When the channel is selected with SEx at NC

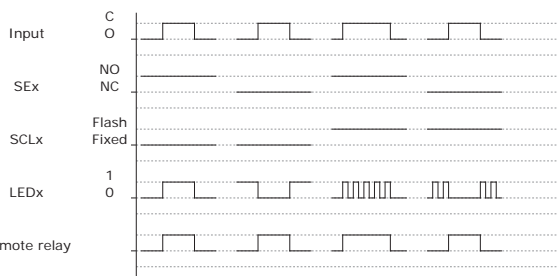
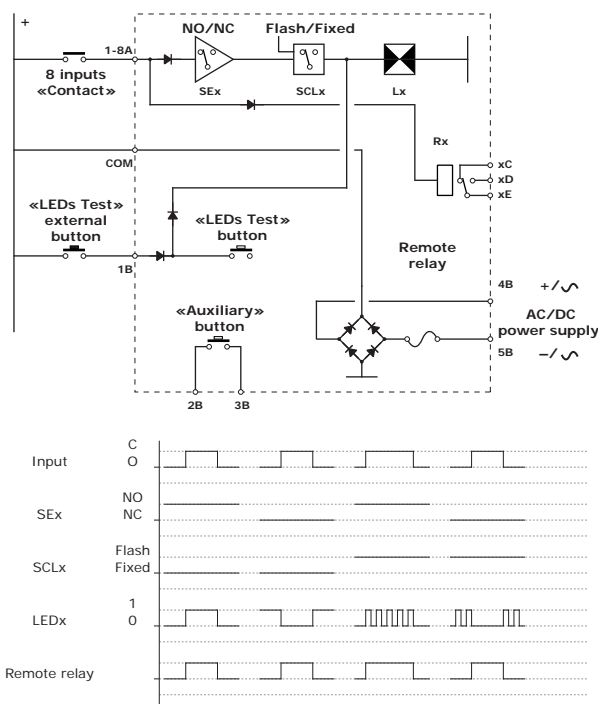
- When the input contact is closed, the light is OFF. Output contact is closed on xD/xE terminals.
- When the input contact is open, LED lights up (ON) or blinks following its selection on SCLx, the output relay falls (relay is at safety positive). Output contact is closed on xC/xE terminals.

When the channel is selected with SEx at NO

- When the input contact is closed, LED lights up (ON) or blinks following its selection on SCLx. Output contact is closed on xD/xE terminals.
- When the input contact is open, LED is OFF, the output relay falls. Output contact is open on xC/xE terminals.

Output relay is activated when the input contact is closed AND the supply voltage present.

MAIN DIAGRAM :



SPECIFICATIONS :

Power supply voltage	24 to 48Vac/dc +/-30%
Consumption	20mA per LED + 7mA per relay
Temperature	-20°C / +60°C
Humidity	90% noncondensing
Remote relay	1RT 6A/12Vdc - 0.15A/240Vac
Aux. push button	6A/12Vdc - 0.2A/250Vac
Weight	250g
Dimensions	96 x 96 x 67 mm
Protection without cover	IP52
Protection with cover	IP54

PRODUCING LABELS :



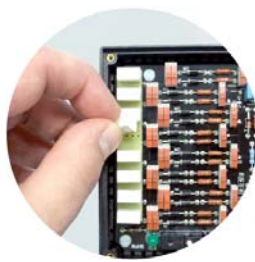
Labels are ordinary paper sheets that can be slid into a transparent pocket included in the thickness of the front. A blank label is supplied with each unit.

Labels can be handmade, or produced on a colour printer (laser or ink-jet). The PC software allows to create labels including images, allows to save and duplicate the achievements. This PC software is FREE. It is possible to load it on our website :

www.ami-control.com

For high humidity countries, the printing on plastic sheets is recommended.

CHANGING LED COLOUR :



The LEDs are fitted on detachable sockets, enabling a change of colour. The colours available are the following ones :

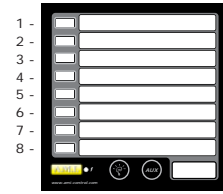
Red, Green, Yellow.

(Blue available on request)

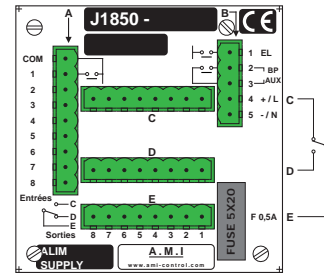
The working lifetime of this component is practically unlimited. The low consumption (max 20mA per LED) and excellent luminosity contribute to the reliability of this type of panel.

FRONT VIEW :

Numbering system

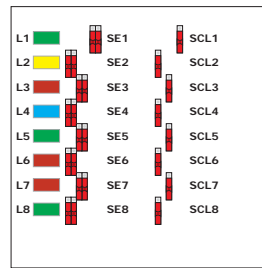
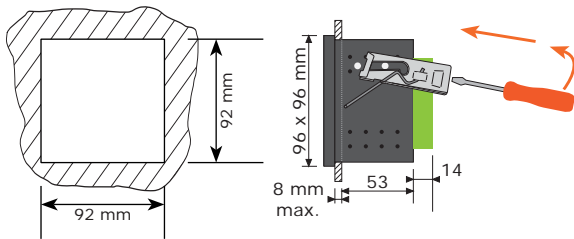


REAR VIEW :



CUT-OUT :

DIN 96x96 format.



Selection made on product front :
 - Lift off frame.
 - Lift off the label support.



ORDER REFERENCE :

J1850-0x-xxR

24Vac/dc : **02**
 48Vdc : **03**

R Red
G Green
Y Yellow
B Blue

Indicates general colour of panel LEDs.

«Positive» inputs / dry Contact (standard) : **1** **O** no relay (standard)
 «Negative» inputs : **2** **H** 8 output relays (ways 1 à 8)

example :

J1850-02-1HR

J1850 width 24Vac/dc power supplied, «positive» inputs with 8 transfer relays included, 8 red LEDs equipped.

Possible complementary LEDs :

- J2101-00-00 LED 5x10mm, color GREEN, code : 2500
- J2101-00-10 LED 5x10mm, color YELLOW, code : 2400
- J2101-00-20 LED 5x10mm, color RED, code : 2300
- J2101-00-30 LED 5x10mm, color BLUE, code : 2300MBW.

To have LEDs of different colours, it is necessary to order a panel with one same colour and LEDs of desired complementary colour.

example : J1850 with 5 green LEDs and 3 red LEDs.
 Order : 1 x J1850-02-10G (all LEDs green)
 3 x J2101-00-20 (3 LEDs 5x10 red)

COMPLEMENTARY PRODUCTS :

M0810 9-inch brushed aluminium Ht : 3U

Front for bay, 4 pre-drilled holes 92x92mm.

M0816 Cover mask 96x96

Fitting to M0810 front.

M0722 sealed front IP54

«Quarter-turn» closing button 96x96 format.

IP54 sealed front that is fitted directly to product front. An O-ring provides sealing between steel cabinet and panel.

The front is a transparent and open door.



M0810
M0816



M0722

Refer to «Accessories» chapter of our catalog.

