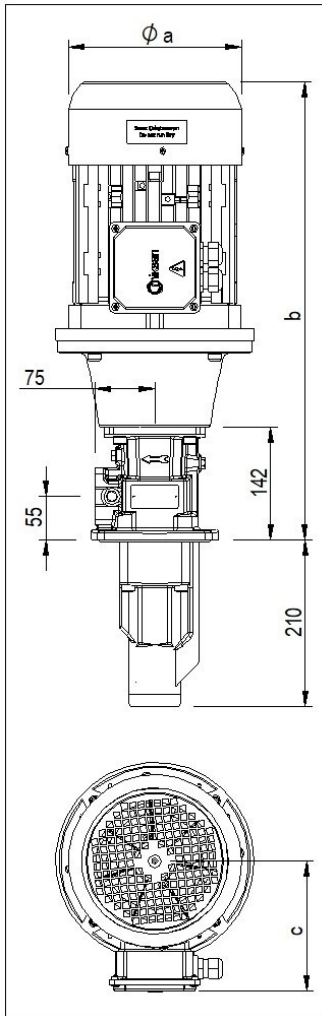


VP 132 SCREW PUMP

VPM



Applications:

- High pressure pumps with low volumetric delivery,
- Cutting, turning milling, boring, grinding and similar applications of the machine tools,
- Especially used for deep hole boring operations due to the high pressure up to 100 bar,
- Pumping cutting/cooling fluids in circulation systems,

Fluid Specifications:

- Coolants,
- Cutting oils,
- Grinding oils,
- Emulsions (minimum 5% oil),
- Thermal oils (contact for detailed information)
- Kinematic viscosity 1...400 mm²/s (contact for higher viscosities)

Materials:

Spindles	: High performance steel, hardened steel
Pump body	: Cast iron - DIN GG 26, specially heat treated
Discharge casing	: Cast iron - DIN GG 26
Housing	: Aluminium
Mechanical seal	: SiC-SiC-Viton
O-ring	: Viton
Suction pipe	: Steel

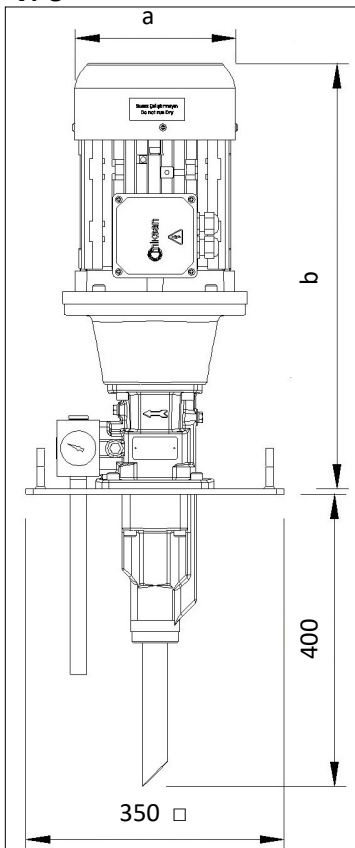
VPM 132

- * VP 132 Screw pump,
- * Electrical Motor , coupling and pump-housing.

VPC 132

- * VP 132 Screw pump,
- * Electrical Motor , coupling and pump-housing.
- * Pressure regulation valve,
- * Pressure gauge,
- * Tank lid
- * Suction and drain pipes.

VPC



Motor

: 3-phase IE3 induction motor
 2-pole, 2900 RPM;
 4-pole, 1450 RPM (Optional)
 Protection degree, IP 55
 Insulation class F

NOMINAL SIZE

Motor		Dimensions			Cable Gland
2 Pole	4 Pole	a	b	c	
kW		mm			
1,1	0,55/0,75	157	485	105	M16x1,5
1,5	1,1	176	495	124	M20x1,5
2,2	1,5	176	520	124	M20x1,5
3	2,2/3	194	560	145	M20x1,5
4	4	194	560	145	M20x1,5
5,5	-	218	580	157	M20x1,5

* VPM and VPC series have the same hydraulic and electrical values.

Pump Performance and Electrical Values

Type $Q_{TH}=26,7$ l/min	50 Hz	2900 RPM				Weight kg
	Max. Pressure bar	Flow Rate l/min		Motor kW		
		1 cSt	20 cSt	1 cSt	20 cSt	
VPM 132	10	23,8	26,3	1,1	1,1	32
	20	22,2	25,4	1,5	1,5	36
	30	20,9	24,3	2,2	2,2	37.5
	40	19,5	23,5	2,2	2,2	37.5
	50	18,2	22,6	3	3	43.5
	60	17,1	21,8	3	3	43.5
	70	15,9	21,2	4	4	46.5
	80	14,6	20,4	4	4	46.5
	90	13,8	20,1	5,5	5,5	53
	100	12,9	19,6	5,5	5,5	53



*Performance curves of the VP 132 series screw pumps at 2900 rpm and viscosity of 1 cSt and 20 cSt. VP 132 can also be operated at 1450 RPM.

