

Option Fiber Laser

- Machine could be equipped with Laser as a CombiLaser machine
- Independent drive of Y-axis
- Laser safety through safety cover
- 1 kW, 2 kW and 4 kW available
- Including suction unit

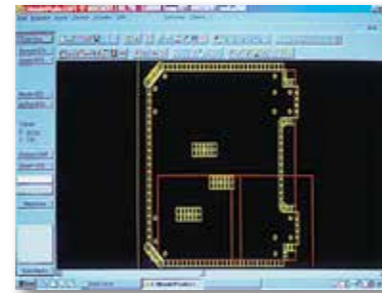


BG-Cut

BG-Cut produce depending on automatic or manual selection the processing contours with the required tools. After the machine program for the punching or laser machine has been created, a setup and processing report can be created.

BG-Cut:

- Direct import of BG-Bend
- 2D Import and drawings
- Machine selection punch or laser
- Automatische sowie manuelle Werkzeug- oder Laserauswahl
- Special tools
- Manual nesting
- Automatic nesting (option Auto Nest)
- 2D simulation
- Online capability
- Setup reports



BG-Cut Auto Nest: (Option)

Offers optimal material utilization with AutoNest - CNC automatic nesting module. AutoNest is a powerful True Shape nesting tool offering versatile methods for automatic and manual nesting to achieve the best possible nesting solutions.



1 BG-Soft enhanced your productivity:

- Faster design-to-production times with automated features
- Offline programming means minimal machine down-time
- Collision-less bend sequences mean reduced stock wastage
- Tool libraries are compatible to available tooling resulting in production-ready Setup reports
- Technology report



BOSCHERT

GmbH+Co.KG

79541 Lörrach

Mattenstraße 1

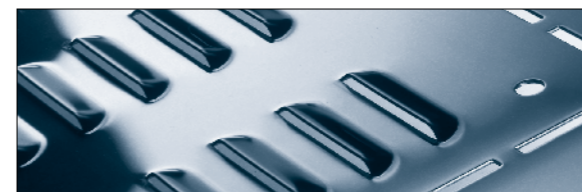
Telephone: +49 7621 9593-0

Telefax: +49 7621 55184

www.boschert.de

info@boschert.de

2022-10



4020

Punching
Nibbling
Forming
Marking
Tapping





4020 tool changer



Special features

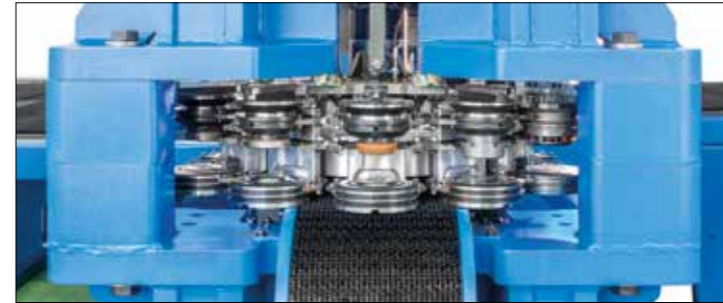
- Sheet size up to super format 2000 x 4000 mm
- Tools up to Trumf size 3 (Ø 105mm)
- Flexible forming from above and below (active die)
- Stable „O“ frame
- 12-way auto tool changer
- Punching machine part chute up to 400 x 2000 mm
- Expandable options / thread cutting / stud welding
- Repositioning for sheets up to 9999 mm length
- Fiber Laser cutting system up to 4KW can be combined

The new CNC punching machine **BOSCHERT 4020** completes the proven MultiPunch series and is specially designed for the processing of sheets in the so-called super format of 2,000 x 4,000 millimeters. With its universal punching head, the **4020** enables the user a flexibility and double-sided forming of sheet metal up to a sheet thickness of 6 mm. Up to 28 tons of punching force are available. For this, the newly developed O-frame gives it the necessary stability.

The **BOSCHERT 4020** is equipped with a quick twelve-station tool changer that reduces idle times. The machine can be expanded in many ways. For example, the **BOSCHERT 4020** can be equipped with a thread cutting unit or with a fiber laser with a maximum output of 4 kilowatts. This gives the user numerous other options for sheet metal processing.

Rotation Index

360 degree stepless Rotation of all tools (incl. Revotool) up to a diameter of maximum 105 mm with 2 servo motors and pneumatic indexing.

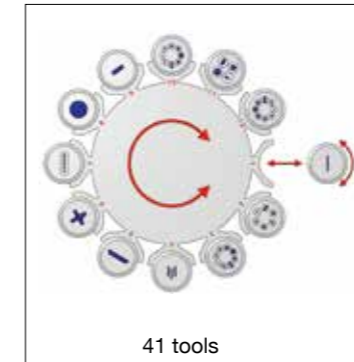


12 Tool stations with cassettes for automatic tool change with easy exchangeable cassettes for punch, stripper and die.

Tool change



Possible tool setup

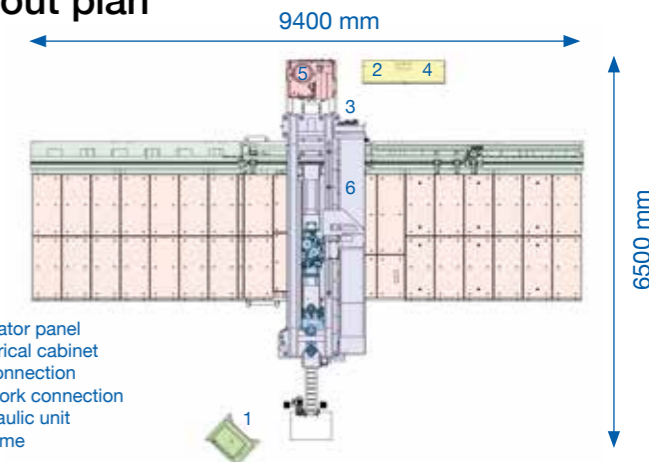


The MultiPunch 4020 could change tools in 3-5 seconds. In combination with Revotool are also less than 3 seconds possible.

Technical Data

Working area	
4020	
Performance	
Max. sheet thickness	Choose material thickness clamps for either 7 mm (1/4") or 12,7 mm (1/2")
Revotool: 4 mm (5/32")	Max. sheet lengths 9999 mm by repositioning
Max. hydraulic punching power	280 kN
Max. workpiece weight	400 Kg
Speeds	
Max. positioning speed	
X-axis	60 m/min
Max. positioning speed	
Y-axis	60 m/min
Simultaneous X & Y	85 m/min
Max. strokes HDE hydraulic	800 strokes/min
Tooling	
Trumf tooling system	
Max. punching diameter	105 mm or any shape within 105 mm
Revotool	4/6/8 stations, shapes fitting within 25/20/16 mm
Time of tool changing	1-5 sec.
Axes accuracy during punching process	
Positioning difference	+ - 0,10 mm
Repeatability	+ - 0,03 mm
Space requirement and weights ¹	
4020	9.400 x 6.500 x 2.600 mm
Weight	18000 kg
Electrical values	
Electrical connection value	25 kVA
Hydraulic motor	15 kW
Electrical consumption 2 mm sheet thickness	
Continuous operation	7,7 kW/h
Electrical consumption 4 mm sheet thickness	
Continuous operation	8,75 kW/h
Required fuse	3 x 35 A
Pneumatic connection value	min. 4 bar

Layout plan



- 1 Operator panel
- 2 Electrical cabinet
- 3 Air connection
- 4 Network connection
- 5 Hydraulic unit
- 6 O-frame

O-Frame/Part chute



Solid welded steel construction guarantees the highest stability for punching sheets up to 12,7 mm thickness. Part chute on the left up to part size 400 x 2000 mm. A conveyor belt move the parts to the operator side.

Axis guiding x-axis



Servo geared motor with precision rack and pinion drive.

Electrical cabinet



Open and easily surveyed panel includes digital control, cooling fan, transformers and control.

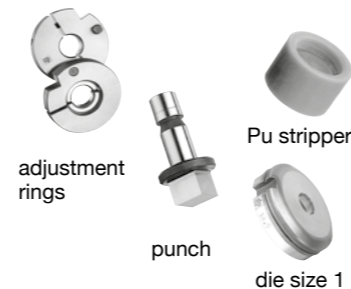
Industrial CPU



Control with internal memory, USB port and LAN RJ 45 for network connection. Possible remote maintenance by internet.

Trumf® Standard Tools

All Trumf standard tools up to size 3 can be used and also all **BOSCHERT** Revotools. Therefore the Multipunch could handle up to maximum 96 tools.



- easy handling
- low cost
- long tool life
- long regrind length

