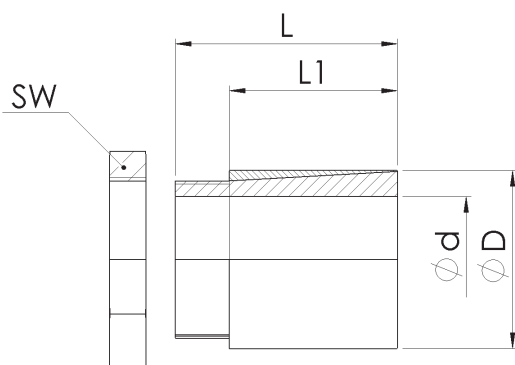


WSR500-RF selbstzentrierend - Edelstahlausführung self-centering - stainless steel version



Material:
Edelstahl
Toleranz:
Welle: h8
Nabe: H8

Material:
Stainless steel
Tolerance:
Shaft: h8
Hub: H8

| WSR500-RF | | Abmessungen Dimensions | | | Technische Daten Technical Data | | | |
|--------------------------------------|------|---------------------------|------|----|------------------------------------|-------|------|-------|
| $\varnothing d \times \varnothing D$ | TKN | L | L1 | SW | P_w | P_N | TA | M |
| | [Nm] | [mm] | | | [N/mm ²] | | [Nm] | [kg] |
| 4x8 | 3 | 15 | 12,5 | 8 | 80 | 20 | 5 | 0,004 |
| 5x10 | 4 | 15 | 12,5 | 10 | 68 | 17 | 5 | 0,006 |
| 6x10 | 7 | 15 | 12,5 | 10 | 83 | 30 | 8 | 0,005 |
| 6,35x10 | 7 | 15 | 12,5 | 10 | 74 | 30 | 8 | 0,005 |
| 7x12 | 8 | 15 | 12 | 12 | 69 | 24 | 9 | 0,009 |
| 8x14 | 14 | 22 | 19 | 16 | 61 | 20 | 15 | 0,018 |
| 9x14 | 14 | 22 | 19 | 16 | 48 | 20 | 15 | 0,015 |
| 9,53x14 | 14 | 22 | 19 | 16 | 43 | 20 | 15 | 0,013 |
| 10x17 | 18 | 22 | 18,5 | 18 | 52 | 18 | 19 | 0,029 |
| 11x17 | 18 | 22 | 18,5 | 18 | 43 | 18 | 19 | 0,028 |
| 12x17 | 18 | 22 | 18,5 | 18 | 36 | 18 | 19 | 0,026 |
| 14x20 | 24 | 28 | 23 | 20 | 28 | 14 | 25 | 0,036 |
| 15x20 | 24 | 28 | 23 | 20 | 25 | 14 | 25 | 0,036 |
| 15,88x23 | 26 | 28 | 23 | 26 | 24 | 11 | 27 | 0,048 |
| 16x23 | 26 | 28 | 23 | 26 | 23 | 11 | 27 | 0,051 |
| 17x23 | 26 | 28 | 23 | 26 | 21 | 11 | 27 | 0,045 |
| 19x25 | 29 | 28 | 23 | 27 | 19 | 11 | 30 | 0,047 |
| 20x28 | 31 | 28 | 23 | 30 | 18 | 9 | 32 | 0,067 |

Laufend aktualisierte Daten finden Sie auf unserer Homepage. For continuously updated data please refer to our website.

Technische Daten

TKN - Drehmoment
 P_w - Flächenpressung Welle
 P_N - Flächenpressung Nabe
TA - Anzugs-Drehmoment
M - Masse

Technical Data

TKN - Torque
 P_w - Surface pressure shaft
 P_N - Surface pressure hub
TA - Installation torque
M - Mass

| | | | | |
|---------------------------------|-----------|----|---|----|
| Bestellbeispiel / order example | WSR500-RF | 10 | x | 17 |
| Modell / model | | | | |
| $\varnothing d$ | | | | |
| $\varnothing D$ | | | | |

