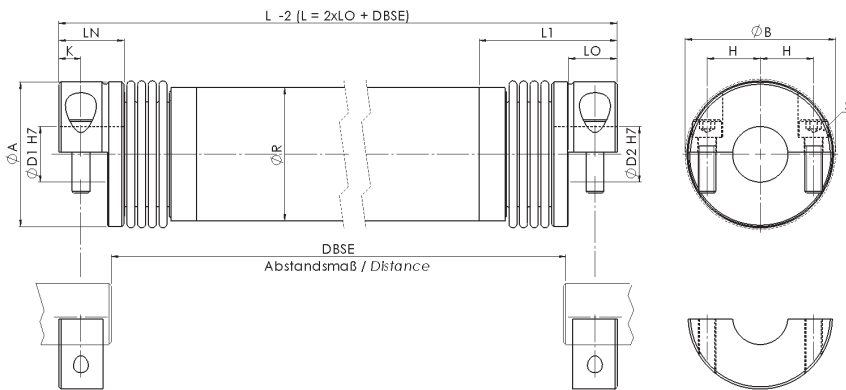


# ZWK4-H mit geteilter Klemmnabe - Metallbalg Ausführung with split clamping hub - metal bellow version



**Material:**  
Balg - Edelstahl  
Nabe - Aluminium  
Zwischenrohr - Aluminium  
**Temperaturbereich:**  
-30 °C bis +120 °C  
**Optional Passfedernut ØD1 / ØD2:**  
Nach DIN 6885

**Material:**  
Bellow - stainless steel  
Hub - aluminium  
Intermediate tube - aluminium  
**Temperature range:**  
-30 °C to +120 °C  
**Optional keyway ØD1 / ØD2:**  
Acc. to DIN 6885

| ZWK4-H        |      | Abmessungen<br>Dimensions |     |           |      |      |      |     |      |       |      | ISO 4762 | Technische Daten<br>Technical Data |          |
|---------------|------|---------------------------|-----|-----------|------|------|------|-----|------|-------|------|----------|------------------------------------|----------|
| Größe<br>Size | TKN  | L                         | ØA  | ØD1 / ØD2 | LN   | LO   | L1   | ØR  | ØB   | K     | H    | S        | TA                                 | CT       |
|               | [Nm] | [mm]                      |     |           |      |      |      |     |      |       |      |          | [Nm]                               | [Nm/rad] |
| 10            | 10   | 82 - 3000                 | 40  | 6 - 25    | 14   | 8,8  | 42   | 35  | 41,5 | 4,7   | 15,5 | M4       | 5                                  | 3521     |
| 18            | 22   | 132 - 3000                | 45  | 8 - 25,4  | 20,5 | 13,5 | 55   | 40  | 47   | 5,75  | 17,5 | M5       | 11                                 | 4006     |
| 30            | 36   | 130 - 3000                | 54  | 10 - 30   | 24,5 | 17   | 52   | 50  | 56   | 7,5   | 20   | M6       | 19                                 | 9781     |
| 60            | 75   | 165 - 3000                | 65  | 12 - 35   | 29   | 22   | 61   | 60  | 67   | 10    | 24   | M8       | 42                                 | 22600    |
| 150           | 180  | 196 - 3000                | 79  | 14 - 42   | 34   | 24   | 70,5 | 75  | 84   | 11,75 | 28   | M10      | 83                                 | 47169    |
| 200           | 240  | 218 - 3000                | 90  | 20 - 45   | 38   | 28   | 74   | 90  | 93   | 12,5  | 31,5 | M12      | 145                                | 75797    |
| 300           | 360  | 220 - 3000                | 109 | 24 - 60   | 38   | 28   | 82   | 100 | 109  | 13    | 39   | M12      | 145                                | 160700   |
| 500           | 600  | 250 - 3000                | 119 | 35 - 62   | 41,5 | 31,5 | 84,5 | 100 | 119  | 14,25 | 42   | M14      | 255                                | 240740   |

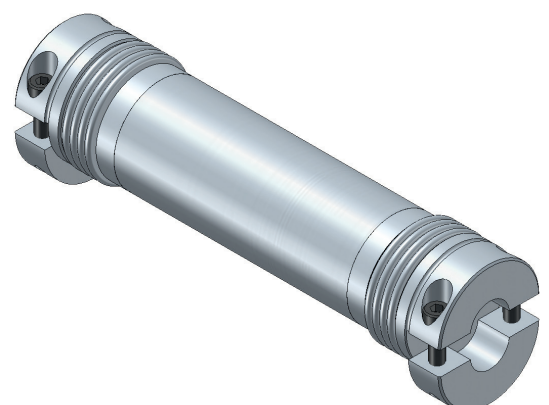
Weitere technische Daten, siehe Seite 44. Further technical data, see page 44.  
Laufend aktualisierte Daten finden Sie auf unserer Homepage. For continuously updated data please refer to our website.

### Technische Daten

TKN - Drehmoment  
TA - Anzugs-Drehmoment der Schraube  
CT - Federsteifigkeit

### Technical Data

TKN - Torque  
TA - Installation torque per screw  
CT - Torsional stiffness



| Bestellbeispiel / order example | ZWK4-H | 30 | 800 | 15 | 20 | SX |
|---------------------------------|--------|----|-----|----|----|----|
| Modell / model                  |        |    |     |    |    |    |
| Größe / size                    |        |    |     |    |    |    |
| Länge / length                  |        |    |     |    |    |    |
| Bohrung ØD1 H7 / bore ØD1 H7    |        |    |     |    |    |    |
| Bohrung ØD2 H7 / bore ØD2 H7    |        |    |     |    |    |    |
| Sonderoption / special option   |        |    |     |    |    |    |