

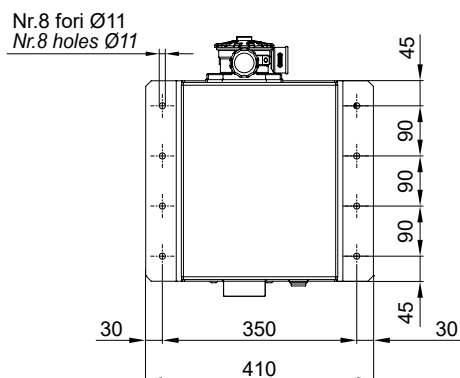
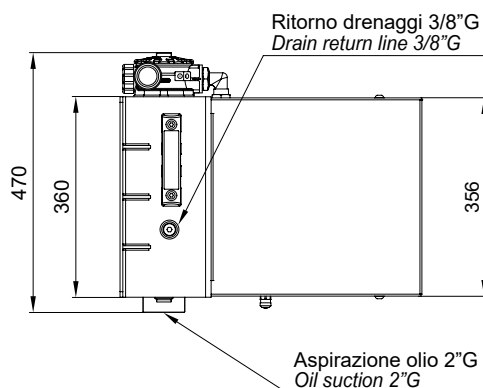
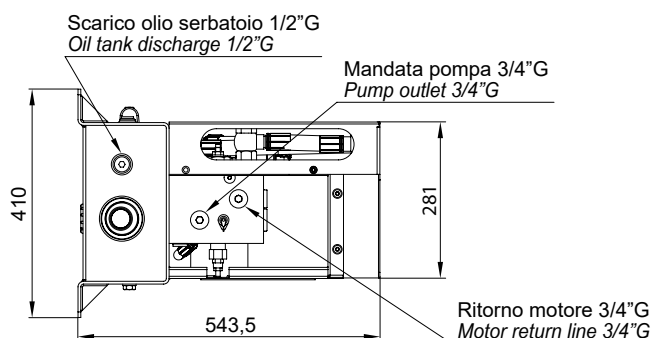
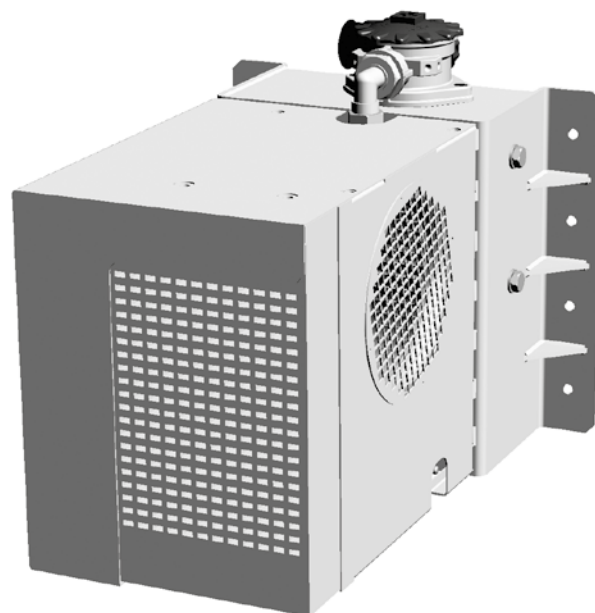
# HYDROFAN 13

GRUPPO RAFFREDDAMENTO IDRAULICO / *HYDRAULIC COOLING UNIT*



## CARATTERISTICHE PRINCIPALI / *TECHNICAL SPECIFICATIONS*

<b>Portata dell'olio</b> <i>Oil flow rate</i>	40 - 130 l/min
<b>Pressione del circuito</b> <i>Pressure</i>	40 - 315 bar
<b>Dissipazione del calore</b> <i>Heat dissipation</i>	13 kW a 40°C
<b>Filtrazione linea di ritorno</b> <i>Return line filtration</i>	25 µm
<b>Valvola di sicurezza integrata</b> <i>Integrated over pressure valve</i>	



## GAMMA DISPONIBILE

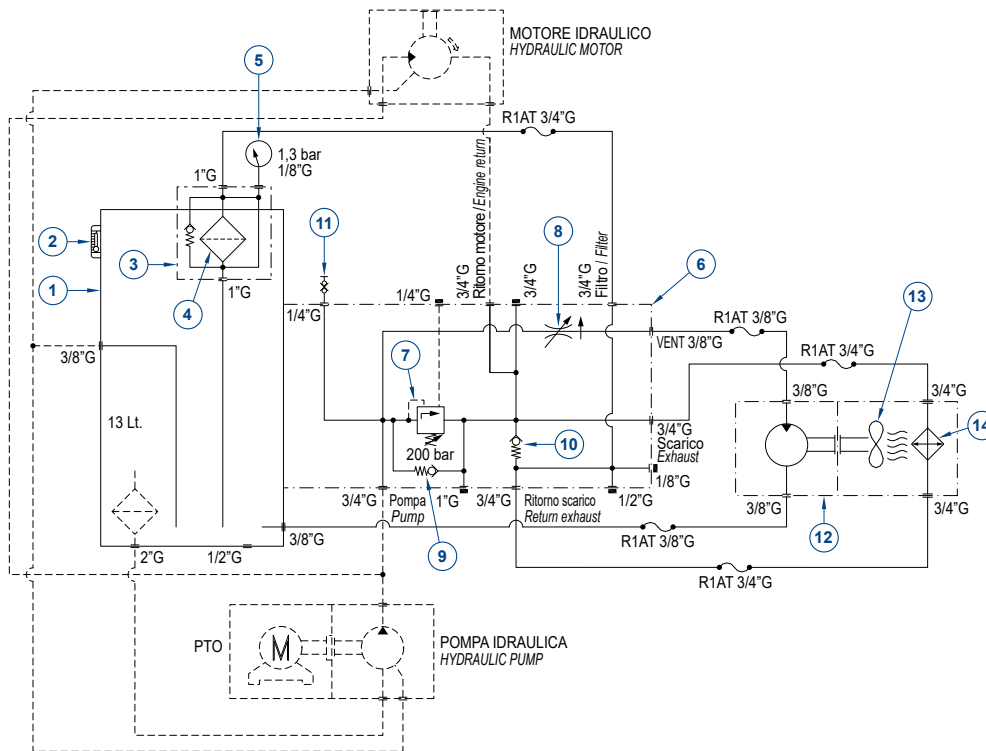
DESCRIZIONE <i>DESCRIPTION</i>	CODICE <i>CODE</i>	VELOCITÀ VENTOLA <i>FAN SPEED</i> (rpm)	CAPACITÀ SERBATOIO <i>TANK CAPACITY</i> (Lt.)	PESO <i>WEIGHT</i> (kg)
Hydrofan 13 con calotta in acciaio verniciato <i>Hydrofan 13 with motor protection cap steel</i>	620001033006	2500	13	46
Hydrofan 13 con calotta in acciaio inox <i>Hydrofan 13 with motor protection cap stainless steel</i>	620001033008	2500	13	43
Hydrofan 13 interamente in acciaio inox <i>Hydrofan 13 entirely in stainless steel</i>	620001033013	2500	13	39

# HYDROFAN 13

GRUPPO RAFFREDDAMENTO IDRAULICO / HYDRAULIC COOLING UNIT



## SCHEMA IDRAULICO / HYDRAULIC DIAGRAM

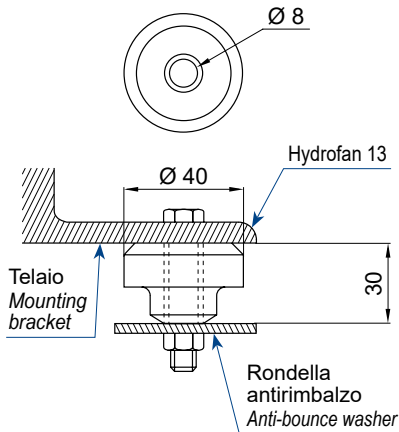


- 1 Serbatoio  
Tank
- 2 Livello olio  
Oil level display
- 3 Filtro  
Filter
- 4 Cartuccia ricambio  
Replacing element
- 5 Indicatore d'intasamento  
Clogging indicator
- 6 Blocco centrale Hydrofan  
Hydrofan central block
- 7 Valvola integrata  
Integrated over pressure valve
- 8 Regolatore velocità ventola  
Adjustable fan speed
- 9 Valvola di ritegno  
Check valve
- 10 Valvola di ritegno  
Check valve
- 11 Minipresa  
Minijack
- 12 Motore ventola  
Fan motor
- 13 Ventola  
Cooling fan
- 14 Massa radiante olio  
Cooling element

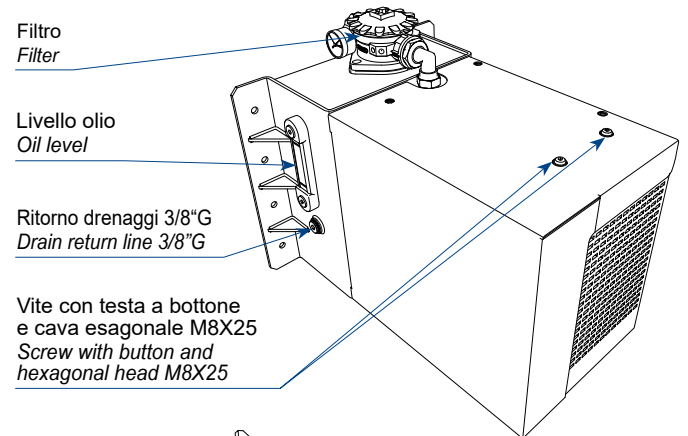
## ANTIVIBRANTI (A RICHIESTA) / ANTIVIBRATIONS (OPTIONAL)

Il refrigeratore deve essere posizionato in modo che sia garantita la stabilità; a tale proposito bisogna prevedere l'eventuale utilizzo di antivibranti (fornibili a richiesta, cod. 620007189100).

The cooler must be positioned in such a way that stability is guaranteed; in this regard, it is necessary to provide for the installation of silent blocks (available on request, code 620007189100).



## ATTACCHI / CONNECTION



## ESEMPIO FISSAGGIO/SUPPORTO / EXAMPLE FIXING/SUPPORT

