



Dual Wire Feeder

WF 25i Dual



Full versatility to unleash
your welding potential

Two welding torches, two wire spools,

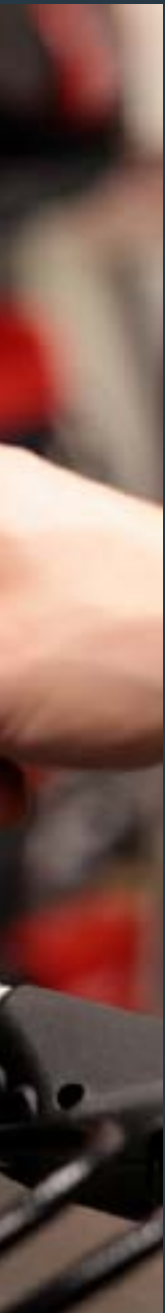
but just one welding system

Greater productivity and potential savings: with the WF 25i Dual, you always have the right wire at hand, regardless of whether you're working with two different filler metals or wire diameters. So there's no need to exchange wire spools, wear parts, or the welding torch.

The Dual wirefeeder ensures stable wirefeeding. It is the perfect choice for the automotive sector or for the manufacture of construction machinery or pipelines without additional system or application complexity. Combined with the TPS/i, it is the ideal solution for your needs, helping you to unleash your full welding potential.



The illuminated LED indicator shows the welder which process line is currently active.



The benefits for you

Operation at the touch of a button

The process line is changed at the touch of a button and this can be done via the torch trigger, directly on the wirefeeder, or on the welding system. Switching to the active process line takes just a few milliseconds.

Increase the deposition rate

For welding without compromise. Thanks to stable wirefeeding of up to 25 m/min, you can achieve a higher deposition rate without affecting the weld quality.

Easy wire change

Two wire spool holders with a support diameter of 300 and 450 mm can be used. The Dual wirefeeder makes changing filler metals quick and easy. What's more, the option to use different wire diameters from 0.8 – 1.6 mm means you have the right wire on hand for every welding challenge.

Quickly set parameters

Simpler, more flexible welding. Set parameters and optimize the device on either the JobMaster welding torch, the welding system's display, or the RC panel.

Modular, robust, flexible

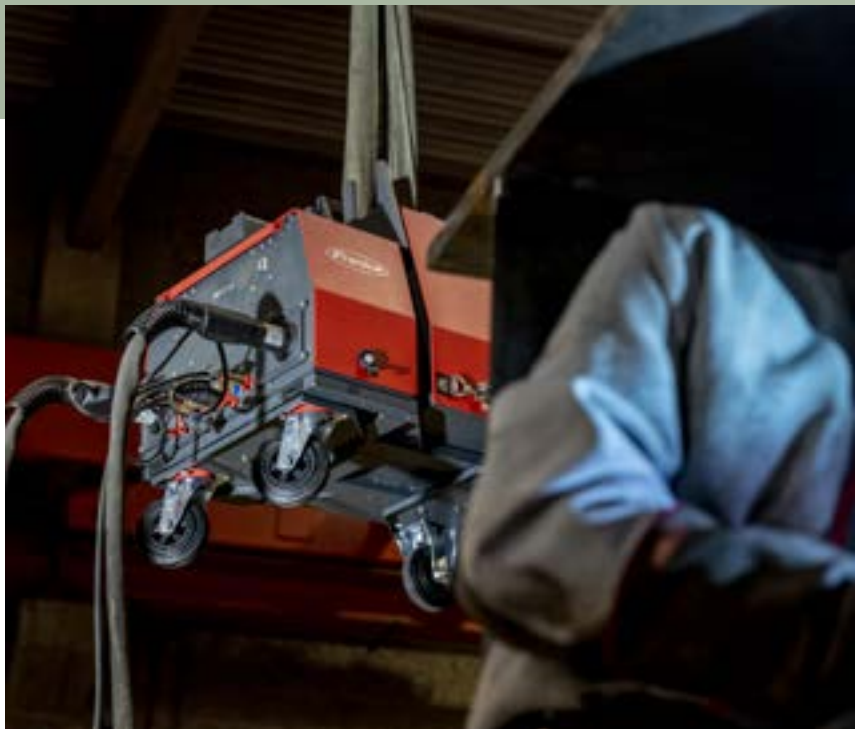


Compact and versatile

Welding made easier. The option of trolley mounting means the entire system can also be used on cranes and can be quickly moved depending on where it needs to be used.

Flexibility on the Trabant and crane

The wirefeeder and wire spools can be used on the Trabant, providing complete flexibility. If you work with large or difficult to access components, then the WF 25i Dual with crane attachment is your ideal companion.



It's all within your grasp: the modular design of the WF 25i Dual means you can build a system that really works for you, helping you to unleash your full welding potential. Depending on the welding application, it can be mounted compactly on the trolley or with the crane in difficult to access welding environments. For an operating radius of up to 25 m, the easy-to-use Trabant is the right choice.

Makes economic and ecological sense

Our entire system, consisting of a TPS/i or iWave and the WF 25i Dual, is a great combination for both time and cost reasons, as well as from an ecological perspective. Companies save on the procurement costs of a second welding system, while also avoiding the carbon footprint a second device would bring with it. On top of that, by not having to constantly switch between two devices, but simply selecting the right welding wire at the touch of a button, the specialist gains significant time savings.



For further information visit:
<https://www.fronius.com/dual-wire-feeder>

Versatility in action

Your complete solution: the WF 25i Dual is compatible with the TPS/i and iWave. A range of mounting options on the welding system, a crane, or Trabant ensure maximum flexibility. Changing the active process line takes just a touch of a button on the welding torch!

Spool holder

The entire system is space saving and ideal for quickly changing location. With up to two gas cylinders on one trolley, it is ready to use right away.

Mounting kit for TU Car 4 Pro

Practical hooks for hosepack and torch holder included!

- H740: Water-cooled TPS/i or gas-cooled iWave AC/DC
- H510: Gas-cooled TPS/i or gas-cooled iWave DC



Hosepack holder

For easy transport of hosepacks on the wirefeeder

Crane attachment

For operating the wirefeeder including wire spools on the crane; the ratchet ensures quick balancing.

D300 spool holder

- The double lock fulfills the highest safety standards.
- For easy changeover of the wire spools, these are attached at an angle of 10 degrees.



Different options

- Crane attachment: option to use the wirefeeder and spool holder on a crane
- Hosepack holder: for transporting longer hosepacks
- Tool tray: for storing wear parts and hand tools

D450 spool holder

For fiber-core spools or coil adapters up to 27 kg

Integrated holder for remote controls

Maximum operating range

Operating radius up to 25 m





Technical data

	WF 25i Dual incl. D300 spool holder	WF 25i Dual incl. D450 spool holder
Wire drive	2 x 4-roller drive	
Wire diameter	0.8–1.6 mm (0.03–0.06 in.)	
Wirefeed speed	1–25 m/min (39.37–984.25 ipm)	
Wire spool diameter	max. 2 x 300 mm	max. 2 x 450 mm
Wire spool weight	max. 2 x 19 kg (42 lbs)	max. 2 x 27 kg (60 lbs)
Protection class	IP23	IP20
Length	62.0 cm (24.4 in.)	61.6 cm (24.3 in.)
Width	56.7 cm (22.3 in.)	50.6 cm (19.9 in.)
Height	44.5 cm (17.5 in.)	42.4 cm (16.7 in.)
Weight	46.55 kg (102.6 lbs)	38.55 kg (85 lbs)

Unleash your welding potential



To ignite the welding potential of our customers: that is our mission. As the innovation leader for arc welding and global market leader for robot-assisted welding, we create both advanced and profitable welding solutions, which are inspired by our sustainable way of thinking. We enjoy long-standing relationships with our customers. We understand their challenges and perspectives and we maintain a close relationship with them through our regional service teams around the world. We listen, understand, and therefore shape the mindset of the welding industry. Our strength lies in combining the knowledge of our customers with our expertise in order to unleash their full welding potential.

Fronius Canada Ltd.
 2875 Argenta Road, Units 4,5 & 6
 Mississauga, ON L5N 8G6
 Canada
 T +1 905 288-21 00
 F +1 905 288-21 01
 sales.canada@fronius.com
 www.fronius.ca

Fronius USA LLC
 6797 Fronius Drive
 Portage, IN 46368
 USA
 T +1 877 FRONIUS
 sales.usa@fronius.com
 www.fronius-usa.com

Fronius UK Limited
 Maidstone Road, Kingstons
 Milton Keynes, MK10 0BD
 United Kingdom
 T +44 1908 512 300
 info-uk@fronius.com
 www.fronius.co.uk

Fronius International GmbH
 Froniusplatz 1
 4600 Wels
 Austria
 T +43 7242 241-0
 F +43 7242 241-95 39 40
 sales@fronius.com
 www.fronius.com