

Vacuum pumps

Oil-lubricated pumps VP-O

FEZER
Simply move more.

Description

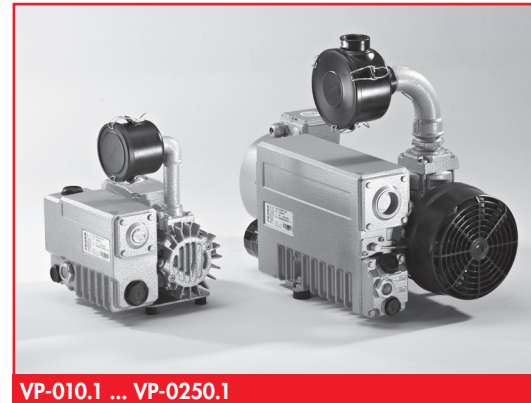
Robust, low-maintenance and long-lasting vacuum pump working after the rotation principle. The pumps are air-cooled and have an internal oil circuit. The exhaust is cleaned by an oil mist filter. The pumps are equipped with an integrated non-return valve and an additional vacuum filter.

Options

- additional gas balancing valve which prevents a mixing of oil and water at high Temperatures
- motor protection switch, vacuum-controlled motor switch
- other voltages on request

Application

- handling of dense to slightly porous workpieces
- central vacuum supply of stationary equipment
- stable, horizontal mounting position



VP-010.1 ... VP-0250.1

Article number

Type		Additional vacuum filter*	Type	Additional filter insert	Motor protection switch**	Vacuum-contr. motor switch***
VP-010.1-230/400V	1.41.1.0001	VF-3/4	1.53.2.0006	2.53.2.0014	6.35.7.0003	6.35.4.0272
VP-016.1-230/400V	1.41.1.0003	VF-3/4	1.53.2.0006	2.53.2.0014	6.35.7.0004	6.35.4.0273
VP-025.3EURO-230/400V	1.41.1.0045	VF-11/4A	1.53.2.0003	2.53.2.0005	6.35.7.0000	6.35.4.0274
VP-025.3MULTI-230/400V	1.41.1.0038	VF-11/4A	1.53.2.0003	2.53.2.0005	6.35.7.0000	6.35.4.0281
VP-040.3EURO-230/400V	1.41.1.0046	VF-11/4A	1.53.2.0003	2.53.2.0005	6.35.7.0000	6.35.4.0275
VP-040.3MULTI-230/400V	1.41.1.0039	VF-11/4A	1.53.2.0003	2.53.2.0005	6.35.7.0001	6.35.4.0282
VP-063.3EURO-230/400V	1.41.1.0047	VF-11/4A	1.53.2.0003	2.53.2.0005	6.35.7.0001	6.35.4.0276
VP-063.3MULTI-230/400V	1.41.1.0040	VF-11/4A	1.53.2.0003	2.53.2.0005	6.35.7.0001	6.35.4.0283
VP-0100.3EURO-230/400V	1.41.1.0048	VF-11/4B	1.53.2.0004	2.53.2.0004	6.35.7.0001	6.35.4.0277
VP-0100.3MULTI-230/400V	1.41.1.0041	VF-11/4B	1.53.2.0004	2.53.2.0004	6.35.7.0002	6.35.4.0284
VP-0160.3EURO-230/400V	1.41.1.0049	VF-21/2	1.53.2.0005	2.53.2.0006	6.35.7.0002	6.35.4.0278
VP-0160.3MULTI-230/400V	1.41.1.0042	VF-21/2	1.53.2.0005	2.53.2.0006	6.35.7.0005	6.35.4.0285
VP-0250.3EURO-230/400V	1.41.1.0050	VF-21/2	1.53.2.0005	2.53.2.0006	6.35.7.0005	6.35.4.0287
VP-0250.3MULTI-230/400V	1.41.1.0043	VF-21/2	1.53.2.0005	2.53.2.0006	6.35.7.0018	6.35.4.0286

* enclosed as standard

** motor protection switch with housing for 400V, 50Hz

*** vacuum generator is switched on and off depending on vacuum level (energy saving module).

Article number and technical data of motor oil

Motor oil for vacuum pump	Content l	2.41.1.0527
viscosity:	(mm ² /s)	100 at 40°C
relative denseness:	(kg/m ³)	884 at 15°C
steam pressure:	(mbar)	1013 at 360°C
ignition Temperature:	(°C)	> 250
burning point:	(°C)	> 240
boiling point:	(°C)	>= 360

Vacuum Pumps

Oil-lubricated pumps VP-O

FEZER
Simply move more.

Technical data

Type	Vacuum (mbar)	Suction volume (m ³ /h)		Suction volume (l/s)		Rotation speed (1/min)		Oil q'ty (l)	Weight (kg)	Noise level dB (A)*
		50 Hz	60 Hz	50 Hz	60 Hz	50 Hz	60 Hz			
VP-010.1-230/400V	-980	10	12	2,77	3,33	2800	3400	0,3	16	59
VP-016.1-230/400V	-980	16	19	4,44	5,28	2700	3280	0,3	18	60
VP-025.3EURO-230/400V	-995	25	---	6,94	---	1410	---	1,0	34	62
VP-025.3MULTI-230/400V	-995	25	30	6,94	8,33	1435	1750	1,0	34	62
VP-040.3EURO-230/400V	-995	40	---	11,11	---	1420	---	1,0	38	64
VP-040.3MULTI-230/400V	-995	40	48	11,11	13,33	1440	1730	1,0	38	64
VP-063.3EURO-230/400V	-995	63	---	17,50	---	1425	---	2,0	52	64
VP-063.3MULTI-230/400V	-995	63	76	17,50	21,11	1450	1740	2,0	52	64
VP-0100.3EURO-230/400V	-995	100	---	27,78	---	1445	---	2,0	70	65
VP-0100.3MULTI-230/400V	-995	100	120	27,78	33,33	1450	1740	2,0	70	65
VP-0160.3EURO-230/400V	-995	160	---	44,44	---	1460	---	6,5	160	70
VP-0160.3MULTI-230/400V	-995	160	190	44,44	52,77	1475	1765	6,5	160	70
VP-0250.3EURO-230/400V	-995	250	---	69,44	---	1460	---	6,5	195	72
VP-0250.3MULTI-230/400V	-995	250	300	69,44	83,33	1475	1765	6,5	195	72

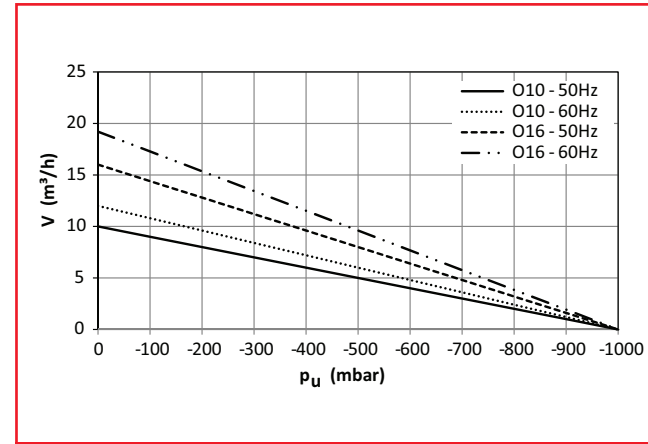
* Specification at 50 Hz

Electrical data

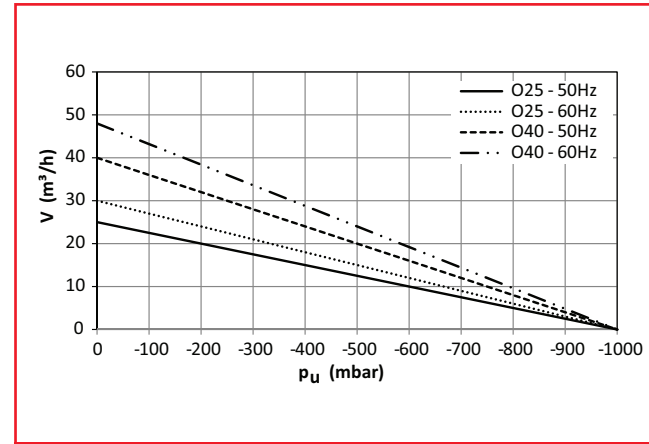
Type	Power (kW)		Voltage (V)		Current consumption (A)		Safety category	Efficiency category
	50 Hz	60 Hz	50 Hz	60 Hz	50 Hz	60 Hz		
VP-010.1-230/400V	0,37	0,45	200-240/346-415	200-277/346-480	2,1/1,2	1,9/1,1	IP54	IE1
VP-016.1-230/400V	0,55	0,65	200-240/346-415	200-277/346-480	2,6/1,5	2,6/1,5	IP54	IE1
VP-025.3EURO-230/400V	0,75	---	230/400 +/-10%	---	3,1/1,8	---	IP55	IE2
VP-025.3MULTI-230/400V	1,1	1,2	190-208/380-415	220-230/440-460	4,8/2,4	4,8/2,4	IP55	IE2
VP-040.3EURO-230/400V	1,1	---	230/400 +/-10%	---	4,7/2,7	---	IP55	IE2
VP-040.3MULTI-230/400V	1,4	1,7	190-208/380-415	220-230/440-460	7,0/3,5	6,6/3,3	IP55	IE2
VP-063.3EURO-230/400V	1,5	---	230/400 +/-10%	---	6,3/3,7	---	IP55	IE2
VP-063.3MULTI-230/400V	2,0	2,4	190-208/380-415	220-230/440-460	9,4/4,7	9,4/4,7	IP55	IE2
VP-0100.3EURO-230/400V	2,2	---	230/400 +/-10%	---	8,5/4,9	---	IP55	IE2
VP-0100.3MULTI-230/400V	2,7	3,4	190-208/380-415	220-230/440-460	11,8/5,9	12,4/6,2	IP55	IE2
VP-0160.3EURO-230/400V	4,0	---	230/400 +/-10%	---	14,1/8,1	---	IP55	IE2
VP-0160.3MULTI-230/400V	5,5	6,6	190-208/380-415	220-230/440-460	24,4/12,2	23,8/11,9	IP55	IE2
VP-0250.3EURO-230/400V	5,5	---	400/690 +/-10%	---	10,5/6,1	---	IP55	IE2
VP-0250.3MULTI-230/400V	7,5	9,2	190-208/380-415	220-230/440-460	31,1/15,5	31/15,5	IP55	IE2

Vacuum Pumps

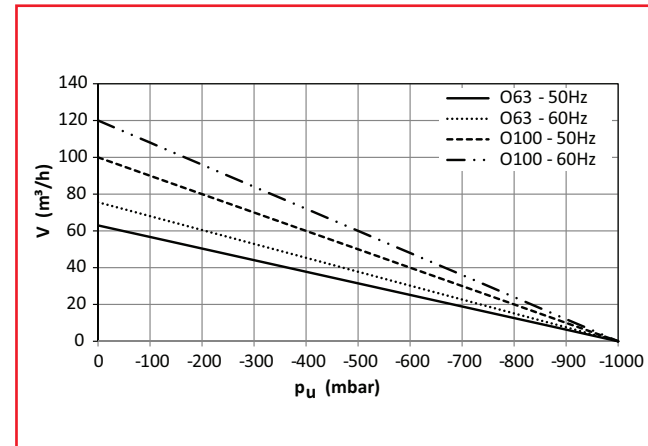
Oil-lubricated pumps VP-O



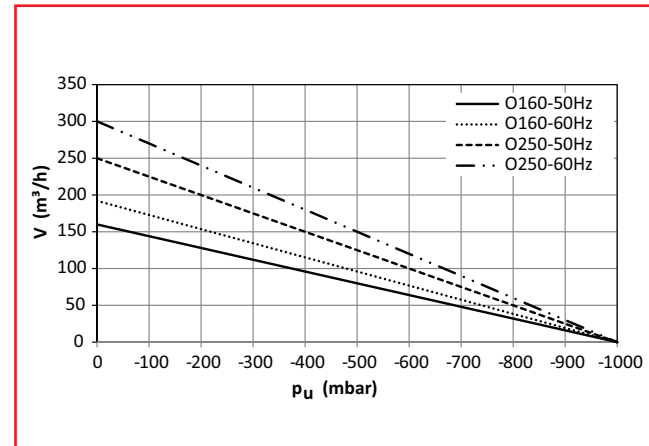
Air flow O10.1, O16.1 in dependence to grade of evacuation



Air flow O25.1, O40.1 in dependence to grade of evacuation



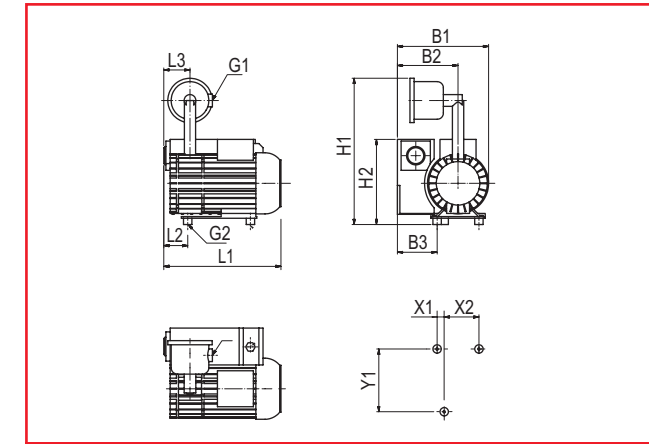
Air flow O63.1, O100.1 in dependence to grade of evacuation



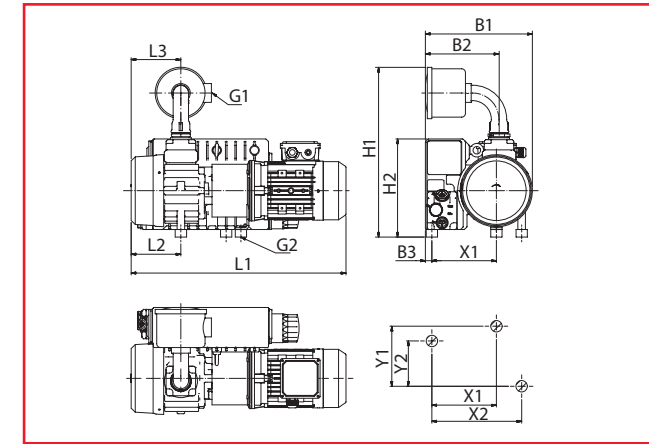
Air flow O160.1, O250.1 in dependence to grade of evacuation

Vacuum Pumps

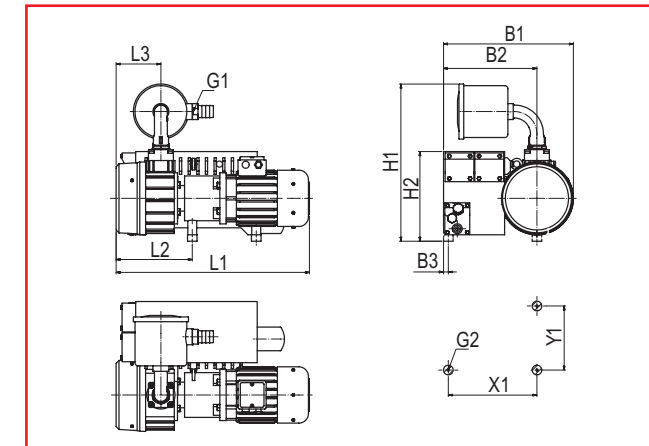
Oil-lubricated pumps VP-O



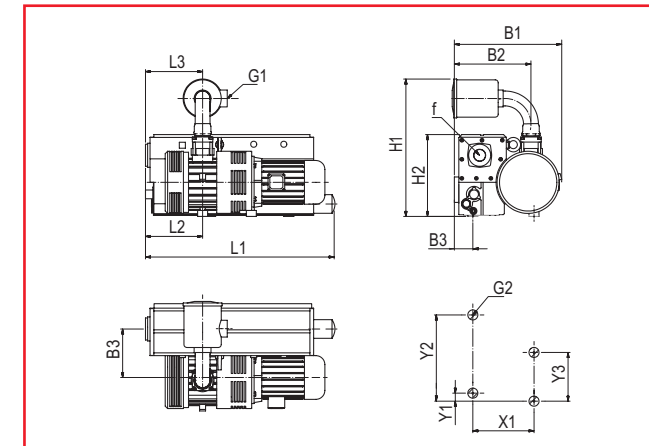
VP-010.1 ... VP-016.1



VP-025.1 ... VP-040.1



VP-063.1 ... VP-0100.1



VP-0160.1 ... VP-0250.1

Dimensions

Type	L1	L2	L3	B1	B2	B3	H1	H2	G1	G2	X1	X2	Y1	Y2	Y3
VP-010.1 ...	271	49	60	218	151	98	350	201	G3/4	M6	17	83	150	75	---
VP-016.1 ...	301	79	60	218	151	96	360	196	G3/4	M6	17	83	150	---	---
VP-025.3EURO- ...	568	131	131	284	195	17	471	260	G1 1/4	M8	171	67	120	39	---
VP-025.3MULTI- ...	585	131	131	284	195	17	471	260	G1 1/4	M8	171	67	120	39	---
VP-040.3EURO- ...	625	151	151	284	195	17	471	260	G1 1/4	M8	171	67	123	56	---
VP-040.3MULTI- ...	625	151	151	284	195	17	471	260	G1 1/4	M8	171	67	123	56	---
VP-063.3EURO- ...	614	137	140	406	292	15	502	280	G1 1/4	M8	277	---	199	---	---
VP-063.3MULTI- ...	627	137	140	406	292	15	502	280	G1 1/4	M8	277	---	199	---	---
VP-0100.3EURO- ...	696	170	170	406	292	15	502	280	G1 1/4	M8	277	---	226	---	---
VP-0100.3MULTI- ...	701	170	170	406	292	15	502	280	G2	M10	277	---	226	---	---
VP-0160.3EURO- ...	921	279	279	554	389	99	703	418	G2	M10	305	---	40	390	263
VP-0160.3MULTI- ...	977	279	279	554	389	99	703	418	G2	M10	305	---	40	390	263
VP-0250.3EURO- ...	1056	319	319	583	389	54	703	418	G2	M10	350	---	8,7	390	303
VP-0250.3MULTI- ...	1086	319	319	583	389	54	703	418	G2	M10	350	---	8,7	390	303