

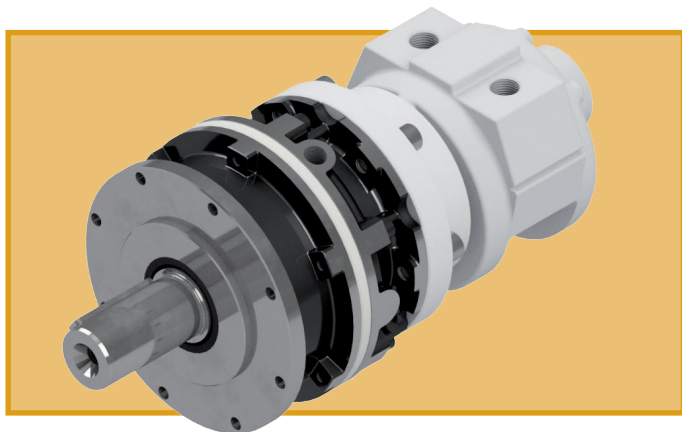
SERIES M500E18F - HP 4,4 KW 3,2

PERFORMANCE AND DIMENSIONS																
MODEL	Speed at max powerr/ min	Power Hp			Min. starting torque Nm			Torque Nm			Torque max. power Nm			Limit torque (*) Nm	Quote "A" mm	Kg.
		6 bar	4 bar	2 bar	6 bar	4 bar	2 bar	6 bar	4 bar	2 bar	6 bar	4 bar	2 bar			
M500E18F1	740	4.4	2.8	1.3	33	21	10	53	42	17	42	28	13	980	127	24
M500E18F2	570	4.4	2.8	1.3	43	28	13	70	55	23	56	36	17	870	127	24
M500E18F3	415	4.4	2.8	1.3	59	38	18	95	75	31	76	49	23	980	127	24
M500E18F6	238	4.4	2.8	1.3	103	67	32	166	131	55	133	86	40	640	127	24
M500E18F12	168	4.4	2.8	1.3	145	94	45	234	186	77	188	122	56	980	167	28
M500E18F13	123	4.4	2.8	1.3	198	129	61	320	254	106	257	167	77	980	167	28
M500E18F24	82	4.4	2.8	1.3	298	194	92	482	382	159	387	251	116	870	167	28
M500E18F34	60	4.4	2.8	1.3	408	265	126	658	522	217	529	342	159	640	167	28

Air consumption	a 6 bar 77,8 l/sec	a 5 bar 67,6 l/sec.	a 4 bar 57,5 l/sec	a 3 bar 47,3 l/sec	a 2 bar 37,2 l/sec
------------------------	--------------------	---------------------	--------------------	--------------------	--------------------

AVAILABLE VERSIONS

M500E18P Reducer with foot fixing



Lubrication: 6-7 gocce/1' servizio continuo
12-15 gocce/1' intermitten operation

Lubrication riduttore: **Horizontal Quote "A" :**

127mm 0,5 litri

167mm 0,8 litri.

Vertical Quote "A":

127mm 1,0 litri

167mm 1,6 litri.

Filtration: Use 64 micron filtration or better

Radial load: 10000 N max.

Axial load: 9000 N max.

Operative temperature: da -20°C a +80°C

Noise: 84dB

Note: Sound pressure values are measured at maximum speed and power, with an operating pressure of 5.5 bar. TSA recommends to connect the exhaust pipes to a suitable oil separator filter with incorporated silencer, in order to allow for sufficient lubrication without the room becoming saturated with polluted air.

