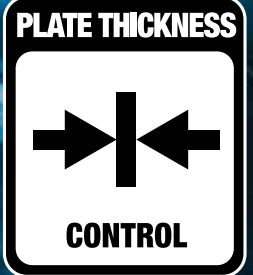


CIGWELD

AN **ESAB** BRAND

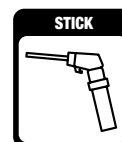
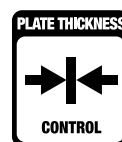
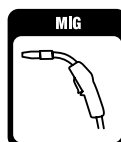
EasyWeld 160

“ THINK MIG WELDING
IS HARD TO SET?
THINK AGAIN! ”



QUICKSET MIG
MANUAL MIG
STICK

📷 📱 📺 | CIGWELD.COM.AU



EasyWeld 160

The CIGWELD EasyWeld 160 welding machine offers many benefits of a professional welding machine in a compact, portable, easy to use and affordable self-contained single phase welding inverter. With QuickSet Plate Thickness Pre-Sets installed the guess work is now taken out of the set-up, to allow excellent welding results.

- The EasyWeld 160 is the most modern, easy-to-use inverter MIG Welder designed to remove the guess work when deciding what parameters should be set to weld differing thicknesses of metal.
- Electronic QuickSet control for accurate adjustment of the welding parameters.
- Suitable for MIG with Shielding Gas and MIG Gasless Welding.
- STICK Welding capability to 140 Amps, with built Voltage Reduction Device (VRD) for extra safety.
- You can weld most metals including Mild Steel, Stainless Steel, Aluminium and Bronze.
- CIGWELD have specially configured this machine to be able to produce great welding results from domestic household 240V x 10A power.
- The EasyWeld 160 machine is ideal for people who want to do light fabrication, maintenance and repairs or DIY around the home, workshop, worksite, or farm, without compromising on quality or safety.

**“EASY TO USE,
EASY TO SET!”**

BRIGHT BLUE LED DIGITAL METER FOR OUTDOOR USE

**EASY SELECTION!
WELDING WIRE SIZE
& PLATE THICKNESS**

RECOMMENDED MIG WELDING THICKNESS RANGE: 0.6mm - 6mm IN QUICKSET MODE, 0.6mm - 10mm IN MANUAL MODE

RECOMMENDED STICK WELDING THICKNESS RANGE: 1.6mm - 10mm

FACTORY RESET FEATURE



EASY SELECTION OF WELDING PROCESSES; MIG GAS (FOR SOLID WIRE WITH SHIELDING GAS), MIG GASLESS (FOR FLUX CORED GASLESS WIRES) AND STICK ELECTRODE WELDING

FINE TUNING OF PRE-SET WIRE FEED SPEED & VOLTS

FULL CONTROL OVER MANUAL SETTINGS

CREEP START FOR SOFT WELD STARTS

FOR GAS AND GASLESS WELDING WIRES



PLATE THICKNESS, QUICKSET WELDING

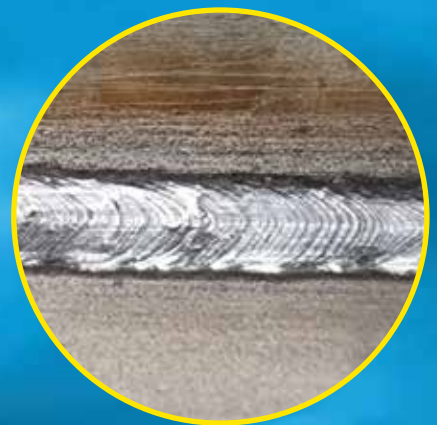
Plate Thickness setting allows you to set up in a flash. There is no guessing the welding parameters. Use the QuickSet feature to set the machine to the correct plate thickness you are welding.



AWESOME OUTPUT FOR A SMALL MIG

The EasyWeld 160 delivers a maximum output of 160Amps DC, which means the machine is capable of welding metals from 0.6mm up to 10mm.

In QuickSet mode the machine is limited to 6mm thickness. To reach higher thicknesses up to 10mm the machine can be manually adjusted to maximum Wire Feed Speed and Voltage which delivers exceptional welding results on larger metal joints.



VERSATILE

You can weld most metals including Mild Steel, Stainless Steel, Aluminium and Bronze.

As part of our product development we rigorously tested the Easyweld 160 with different metals locally!

FEATURES



Input Supply
240 Volt, 50/60Hz, 10 Amp supply lead fitted to the power source.



Current Range
Current Range for this Power Source is 30 to 160A (MIG Mode). Provides DC Output.



QuickSet
QuickSet pre-sets for simple MIG welding. Determined by wire type, wire diameter and plate thickness.



Digital Meter
Easily view all your important welding parameters including Plate Thickness and welding Amps at a glance.



No Fuss Settings
Make your job/project easy, QuickSet takes the guess work out of welding.



QuickSet Pre-Sets and Manual Settings
Versatile with factory Pre-Sets and the ability to manually adjust Volts & Wire Feed Speed



Portability
Light weight 10kg inverter in a rugged case with carry handle and carry strap.



MIG (GMAW / FCAW): 160A @ 15%
0.6-0.8mm: Solid MIG wires
0.8-0.9mm Gasless MIG wires
0.8mm: Aluminium MIG wires
0.8mm: Stainless Steel MIG wires.



STICK (MMAW): 140A @ 15%
Power Source is suitable for 2.0mm, 2.5mm and 3.2mm electrode sizes.



Plate Thickness
Maximum Plate Thickness up to 10mm, using the machine in manual mode.



Wire Type
Suitable for gas and gasless wires.



Integrated Wire Feed Unit
Suits 100mm & 200mm spools.



Creep Start
Slow run-in of the wire, to provide smooth weld starts.



Extra Low Current
Ideal for welding thin sheet metal in MIG GAS mode with solid 0.6mm MIG Wire



Over Temperature Protection
Cut out protection has been fitted to the power source.



Fan Cooled
Keeps the welder running at a higher duty cycle whilst you are welding.



Recommended Generator
9kVA @ 0.8 Power Factor*
*Refer to operating manual for more information.



Compliance
Fully compliant to AS 60974.1-2020 Enclosure rated to IP21S.




1 Year Limited Warranty*
*Refer to operating manual for further details.

QUICKSET IN 3 EASY STEPS!

1



SELECT GAS, GASLESS WIRE OR STICK

Press the **SOFT BUTTON**  to select either MIG GAS (SOLID) when using shielding gas, MIG GASLESS when using Flux Cored Gasless Wire or STICK.



2



SELECT THE WIRE SIZE YOU ARE USING

Repeatedly push in the **CONTROL KNOB**  until the WIRE LED is lit.
Turn the **CONTROL KNOB**  to toggle between the 2 wire sizes.



3

DIAL IN THE CORRECT PLATE THICKNESS YOU INTEND TO WELD

Repeatedly push in the **CONTROL KNOB**  until the PLATE LED is lit
Turn the **CONTROL KNOB**  until the desired metal thickness is showing.



Suitable MIG Wire Sizes: Gasless Wires = 0.8mm or 0.9mm, Solid Wires = 0.6mm or 0.8mm

SPECIFICATIONS

Power Supply (Voltage):	Single-Phase 240V +/-15%
Australian Standards:	AS 60974.1:2020
Supply Frequency:	50/60 Hz
Supply Lead and Plug supplied:	10Amp
Rated Input Current I ₁ eff:	10A
Rated Input Current I ₁ max:	27A
Generator Rating:	9.0 kVA (at 0.8 Power Factor) at Max Amps
Amperage Range (MIG):	30 – 160A
Voltage Range in MIG:	15.5 – 22V
MIG (GMAW) Duty Cycle @ 40°C, 10 minutes	160 Amps @ 15% 80 Amps @ 60% 62 Amps @ 100%

STICK (MMAW) Duty Cycle @ 40°C, 10 minutes	140 Amps @ 15% 70 Amps @ 60% 54 Amps @ 100%
Nominal DC Open Circuit Voltage in MIG Mode:	82V
Open Circuit Voltage (VRD On) STICK Mode	<35V
Weight of Power Source:	10.2Kg
Power Source Dimensions (mm):	L:440 x W:206 x H:308
Weight of Full Package:	13.8Kg
Full Package Dimensions (mm):	L:514 x W:319 x H:371
Protection Class:	IP 21S

* Refer to operating manual for further details.

** Due to large variations in performance and specifications of different brands and types of generators, CIGWELD cannot guarantee full welding output power or duty cycle on every brand or type generator. CIGWELD recommends that when selecting a generator, the power source/generator combination be adequately trialled to ensure the combination performs to the user's expectations.

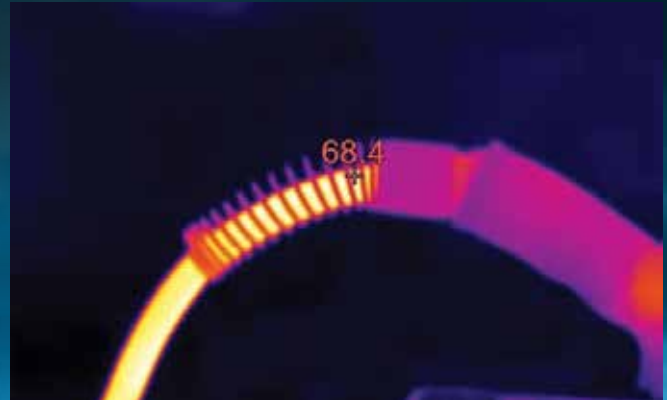
CIGWELD's EasyWeld machines are designed to be technically superior products and are suitable for the serious part-time welding demands. They offer optimum performance, longevity and dependability. Engineered to the highest standards and supported by an extensive warranty, CIGWELD's machines are in it for the long Haul!

PRODUCT TESTING

As part of our product development, CIGWELD rigorously test all the internal components of the welding machine and its external accessories. We make sure that the machines are not just fit for purpose, but will handle tougher than expected working conditions. The below thermal photos taken ensure no overheating outside of our specified ranges. Additionally, we also conduct weld tests on various common metals, using the expertise of our local technical team ensuring that the settings you use on our machines are tuned to local conditions.



Internal thermal photo of the machine during use.



CMG16EL MIG Gun – External thermal photo whilst being used at maximum machine output.



“ QUALITY MIG GUN SUPPLIED ”

The EasyWeld 160 MIG machine is supplied with a quality MIG Gun rated to handle in excess of the maximum output of the machine.

Model Name: CMG16EL

Replacement Part Number: W4018800

SPARE PARTS & ACCESSORIES

Feed Roll 0.8-0.9mm V-Groove knurled flux cored supplied and fitted on the machine	7977732
Feed Roll 0.6-0.8mm V-Groove for hard wires included with the machine	7977036
Feed Roll 0.9-1.2mm V-Groove for hard wires	7977660
Feed Roll 0.8-0.9mm U-Groove for soft wires (Aluminium)	7977731
Feed Roll 1.0-1.2mm U-Groove for soft wires (Aluminium)	7977264
Argon Mini- Regulator and Gas Hose Kit includes CutSkill Regulator/Flowmeter Side Inlet, Gas Hose 2m and Hose Clamp	W4013010
Replacement MIG Gun Euro connector 3m. E180 Gun, replaces CMG16EL	W4018800
WeldSkill Welding Equipment Trolley	W4011501
WeldSkill Heavy Duty Welding Gloves - Medium	646766
WeldSkill Heavy Duty Welding Gloves - Large	646755
WeldSkill Heavy Duty Welding Gloves - XL	646767
WeldSkill Welding Jacket - Medium	646771
WeldSkill Welding Jacket - Large	646772
WeldSkill Welding Jacket - XL	646773
WeldSkill Welding Jacket - XXL	646774

WEAR PARTS & FILLER METALS

Gas Nozzle	W6000600
Contact Tip 0.6mm	OTW11/23/R
Contact Tip 0.8mm	OTW11/30/R
Contact Tip 0.9mm	OTW11/35/R
Contact Tip 1.0mm	OTW11/40/R
Contact Tip 1.2mm	OTW11/45/R
Gas Diffuser (suits CMG16EL)	W6000602
MIG Front-End Kit Box BZL-15 LH, Spare Tips, Nozzles & MIG Pliers etc	W4012303
Conduit Liner Steel 5m, 0.6-1.0mm Blue (hard wires)	WS1240015/R
Conduit Liner Teflon 4m, 0.8-1.2mm Red for soft wires (Aluminium)	WS1260026/R
Jump Liner 1.0-1.2mm for soft wire (Aluminium)	WS0010304/R
WeldSkill Solid Steel MIG Wire 0.6mm x 0.9Kg Minispool	WS0906
WeldSkill Solid Steel MIG Wire 0.6mm x 5.0Kg Handispool	WS5006
WeldSkill Solid Steel MIG Wire 0.8mm x 0.9Kg Minispool	WS0908
WeldSkill Solid Steel MIG Wire 0.8mm x 5.0Kg Handispool	WS5008
WeldSkill Gasless Steel MIG Wire 0.8mm x 0.9Kg Minispool	WG0908
WeldSkill Gasless Steel MIG Wire 0.8mm x 4.5Kg Handispool	WG4508
WeldSkill Gasless Steel MIG Wire 0.9mm x 0.9Kg Minispool	WG0909
WeldSkill Gasless Steel MIG Wire 0.9mm x 4.5Kg Handispool	WG4509
Autocraft 316LSi Solid Stainless Steel MIG Wire 0.8mm x 1Kg Minispool	721285
Autocraft 316LSi Solid Stainless Steel MIG Wire 0.8mm x 5Kg Handispool I	720288
Autocraft AL5356 Solid Aluminium MIG Wire 0.8mm x 0.5Kg Minispool	721221
Autocraft AL5356 Solid Aluminium MIG Wire 0.9mm x 0.5Kg Minispool	721223
Autocraft AL5356 Solid Aluminium MIG Wire 1.0mm x 0.5Kg Minispool	721224
Autocraft AL5356 Solid Aluminium MIG Wire 1.0mm x 2Kg Handispool	723224
Autocraft Silicon Bronze Solid MIG Wire 0.8mm x 5Kg Handispool	720159



Argon Mini-Regulator and Gas Hose Kit
Part Number: W4013010

CIGWELD

AN ESAB BRAND

EasyWeld 160

ORDERING INFORMATION

EASYWELD 160 QUICKSET MIG WELDER

W1201160

PACKAGE CONTENTS

EasyWeld 160 Power Source

CMG16EL MIG Gun 3m- Euro quick connector

Work Clamp with 2.5m Lead

Twist Lock Electrode Holder with 2.5m Lead

2 x Feed Rolls: 0.8/0.9mm Gasless (Fitted), 0.6/0.8mm Solid Wires

Contact Tips: 0.6mm, 0.8mm (Fitted), 0.9mm

Shoulder Strap

Operating Manual

Operating Manual can be downloaded at cigweld.com.au/manuals



CIGWELD Pty Ltd An ESAB Brand 71 Gower Street, Preston VIC 3072 Australia
Customer Care: Tel: 1300 654 674, Fax: 03 9474 7391, Email: enquiries@cigweld.com.au
International Enquiries: Tel: +61 3 9474 7508 Fax: +61 3 9474 7488



CIGWELD.COM.AU

In the interest of continuous improvements, CIGWELD Pty Ltd ABN 56 007 226 815 (An ESAB Brand) reserves the right to change specifications or design on any of its products without prior notice.

WE RECOMMEND GENUINE CIGWELD PRODUCTS

BIGGEST RANGE, BEST QUALITY & GUARANTEED PERFORMANCE

