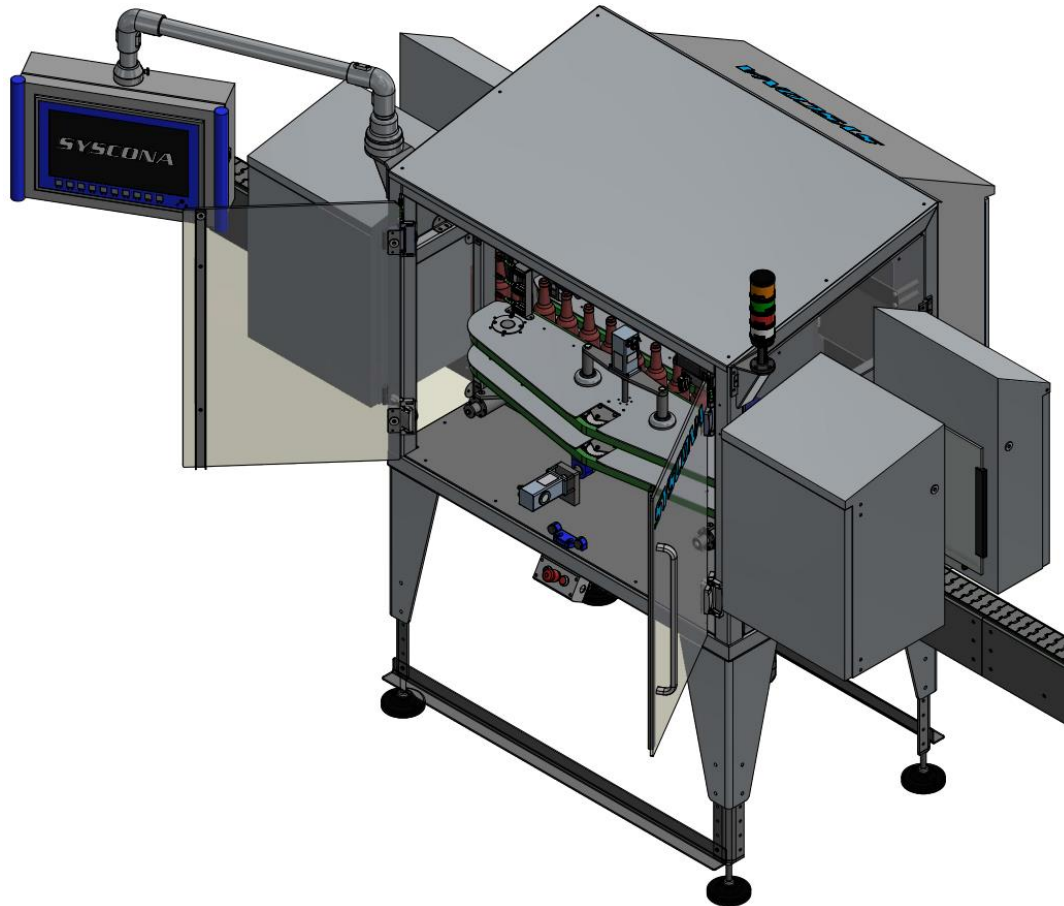




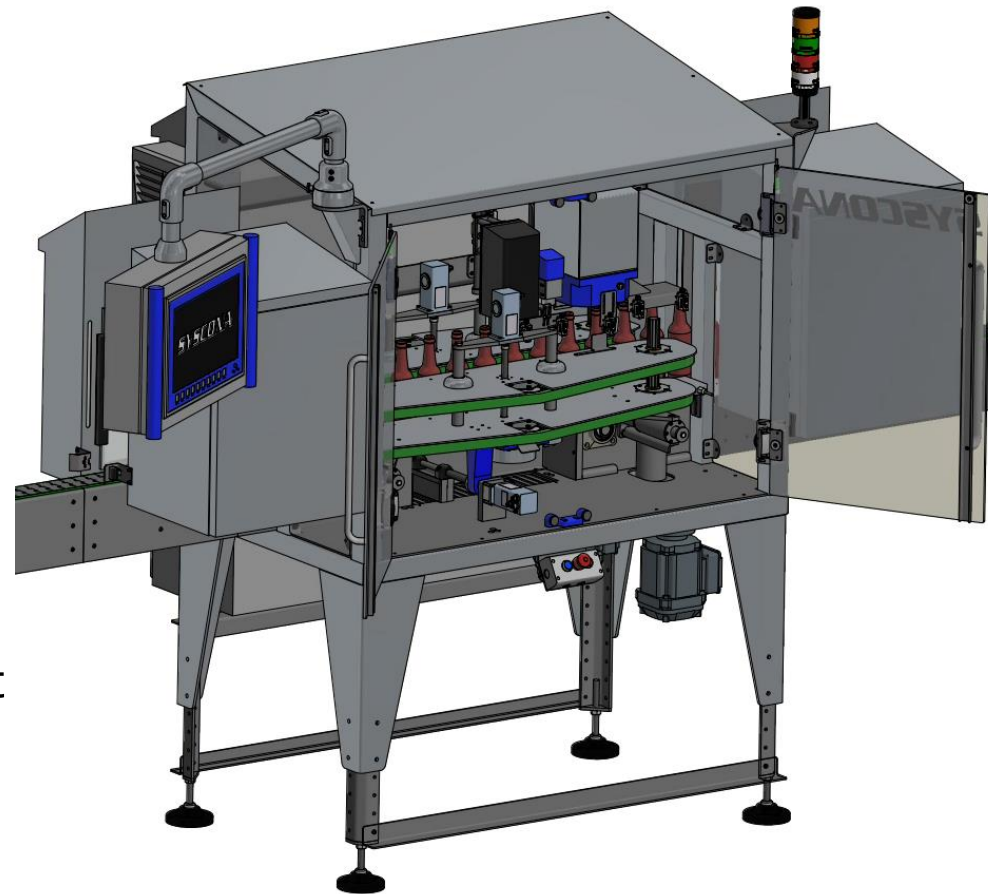
## Empty Bottle Inspector

# UNICHECK V



## Unicheck V – front view

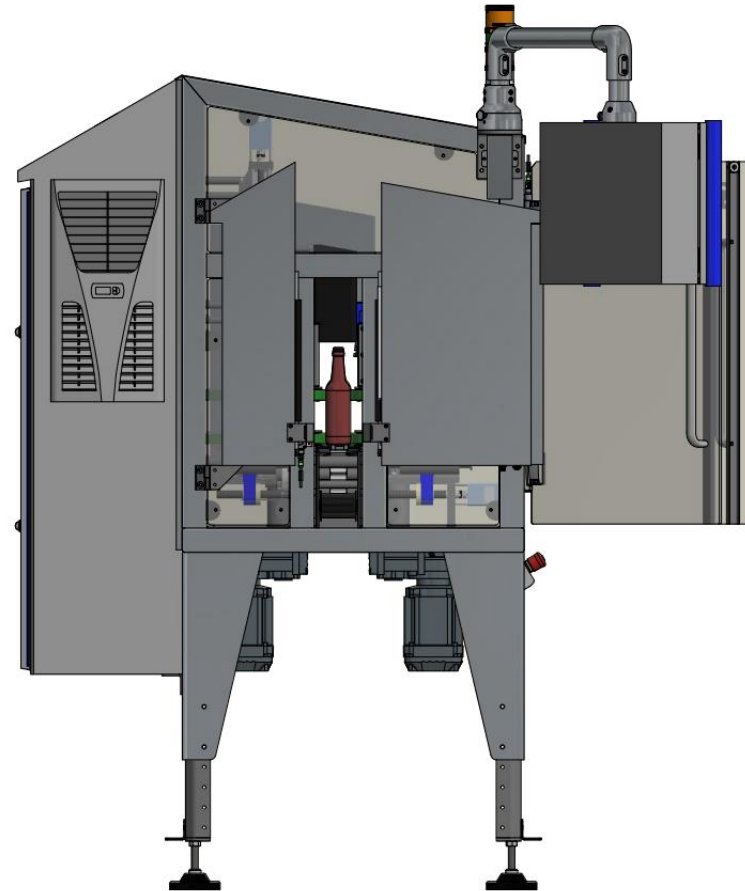
- Compact linear design
- Particularly good accessibility to all assemblies
- Modular and expandable
- Minimal maintenance and changeover effort
- Generously designed shard shaft with bottom blow-off



significant features

## Unicheck V – side view infeed

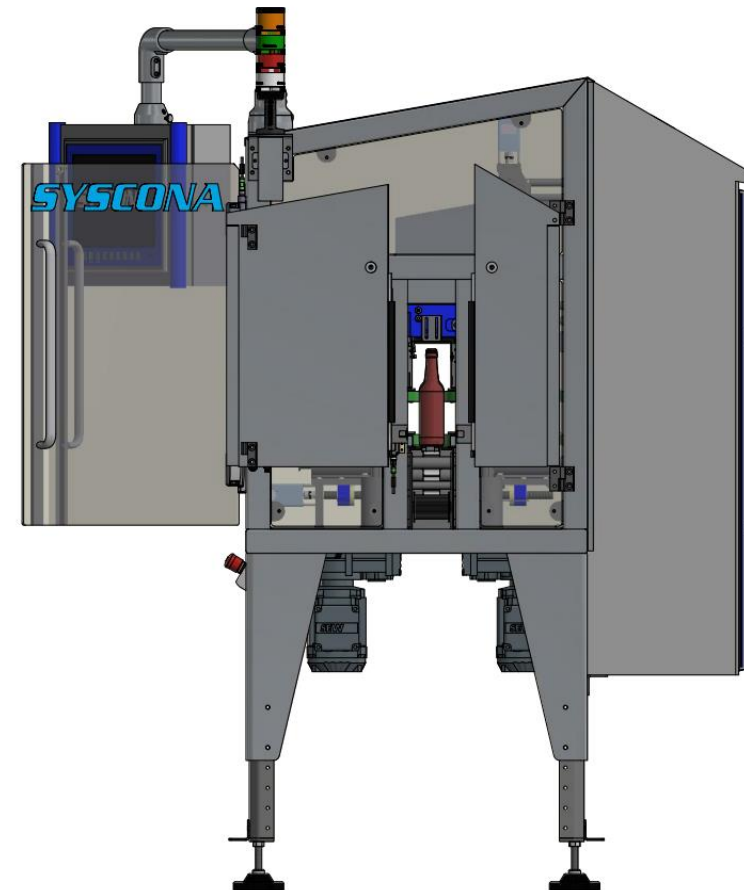
- Easy disassembly of the inspection units
- All inspection units with plug-in connections
- Optics based on hygiene design
- High quality components for example, drives for height adjustment in stainless steel design IP-68



significant features

## Unicheck V – side view outfeed

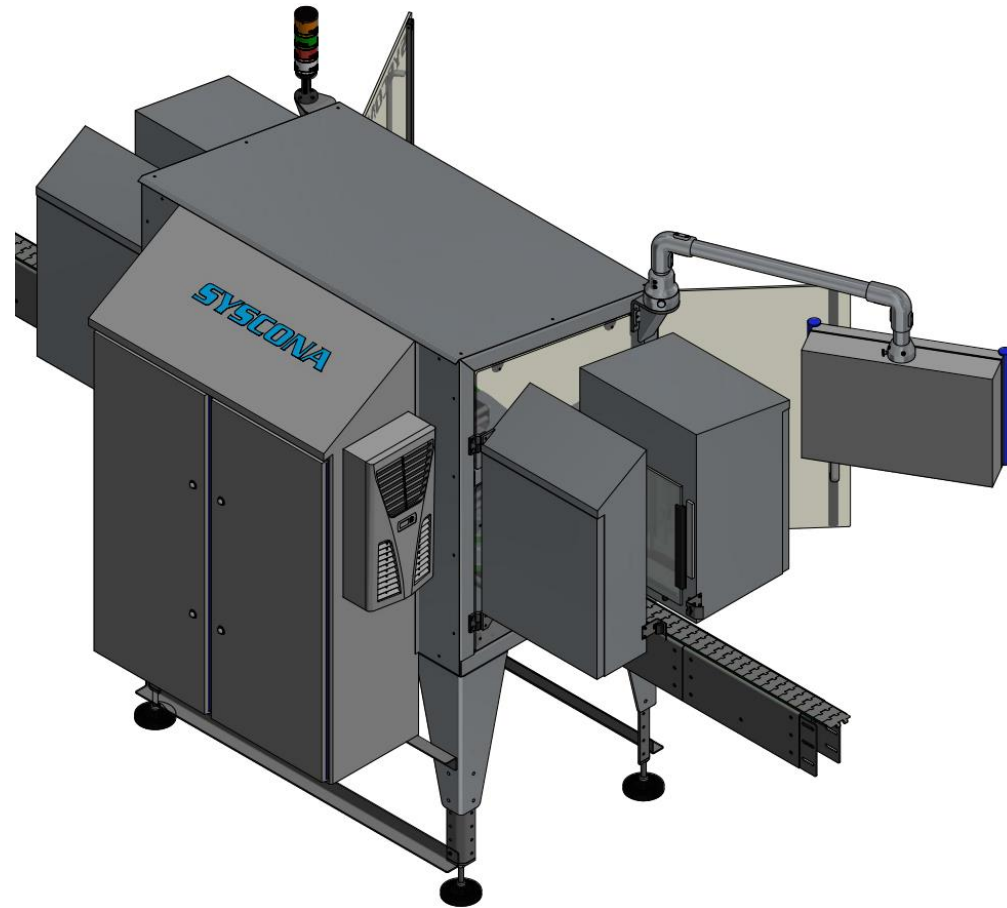
- Automatic adjustment for grade change
- Individual inspection units with separate height adjustment for optimal positioning to the container
- Compact design without compromising the quality of the individual stations
- Automatic belt adjustment, optimal adaptation to the shape of the bottle



significant features

## Unicheck V – back view

- Integrated control cabinet on the back
- Excellent accessibility
- No extra control cabinet required
- Multi-axis positionable 18.5" touchscreen for optimal operation



significant features

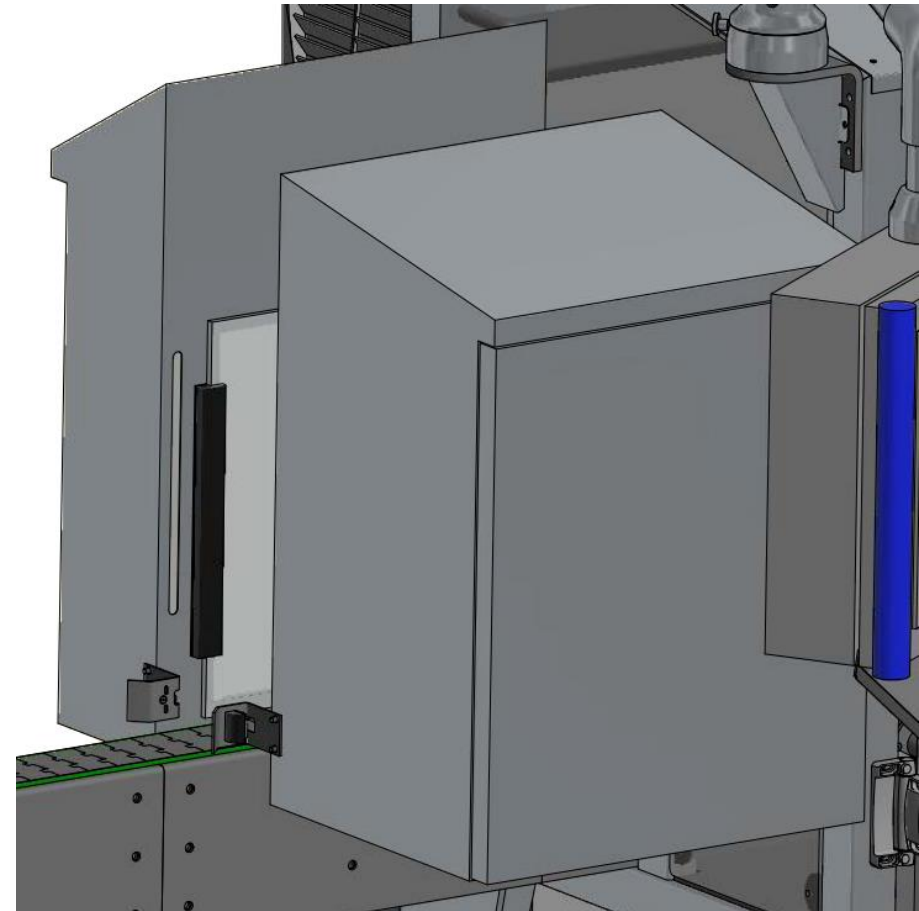
- In-house developed real-time capable controller  
*Syscona Unicept 5-Control-Unit*
- Safe communication via CAN bus with all controllers
- Independent and up-to-date with Windows platform and industrial PC
- High-resolution GigE cameras
- High quality and most modern mirror and special lens systems
- Light optics with pulsing special LED light sources that guarantee a long service life and minimum energy consumption

- The latest software and control technology
- In-house developed application software, individually expandable to customer-specific applications and requests
- State-of-the-art, individual and expandable inspection tools
- Extensive and user-friendly diagnostic options
- Different interfaces to higher-level controls or production data acquisition
- Software module for product monitoring and self-tests

## Side wall infeed/outfeed

(Inspection for dirt, defects, cracks or scuffing)

- Side wall housing with one camera and image recording via multiple mirror system
- Scanned area in the transmitted light process of approx.  $240^\circ$  per camera
- 3 sides of the bottle in one camera image
- Empty containers are specifically rotated by  $90^\circ$
- Also available as a quadruple sidewall inspection



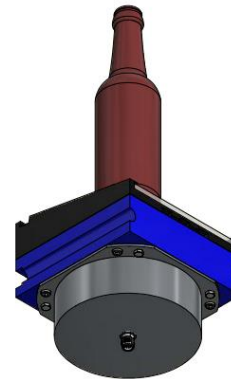
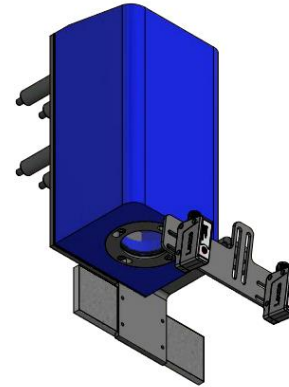
Presentation of the individual stations



## Bottom

(Inspection for dirt or foreign objects such as foil or cigarette ends)

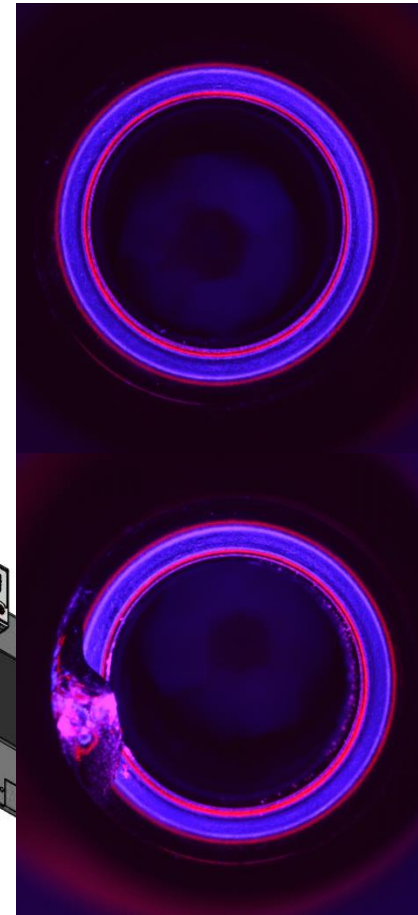
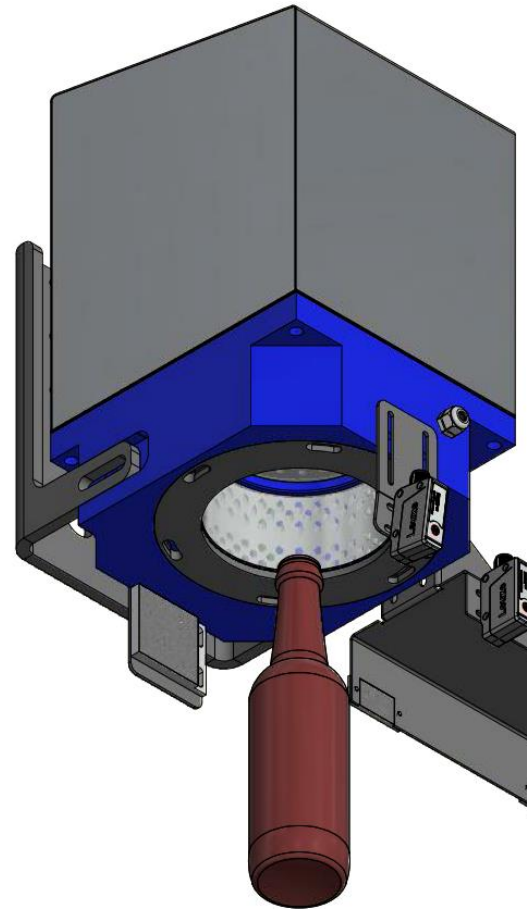
- New LED light source with sloping protective pane
- Protective pane can be removed individually without tools
- Lens with integrated liquid lens for dynamic autofocus
- Lens focal length is automatically adjusted to container size



## Mouth

(Inspection for defects, dirt or cracks)

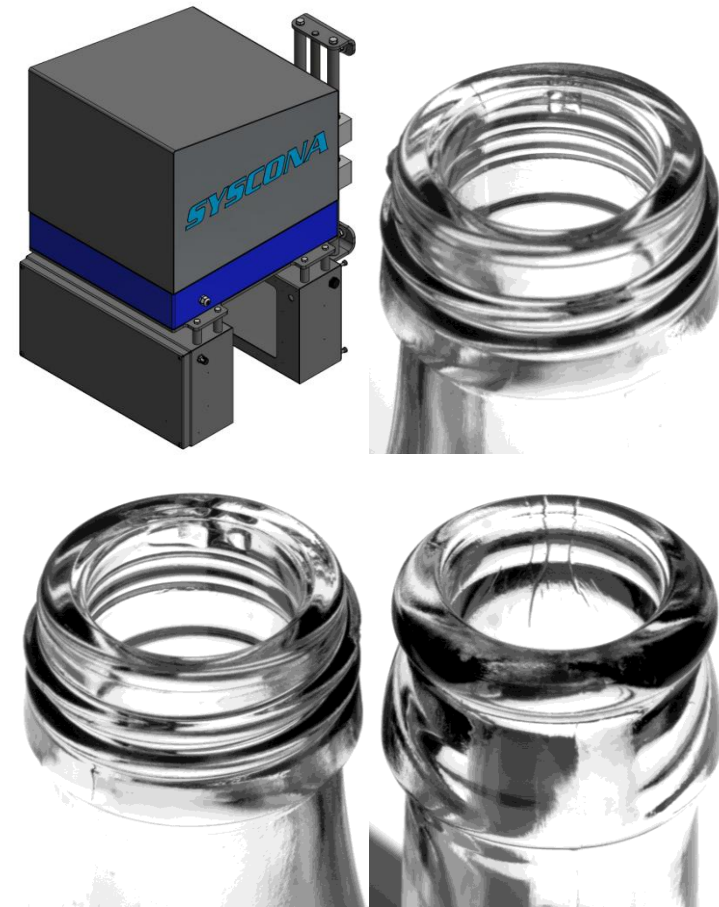
- Optimum positioning to the finish surface with independent height adjustment
- Mouth camera with new special light source
- Multicolor LED ring light source with sequential LED control



Presentation of the individual stations

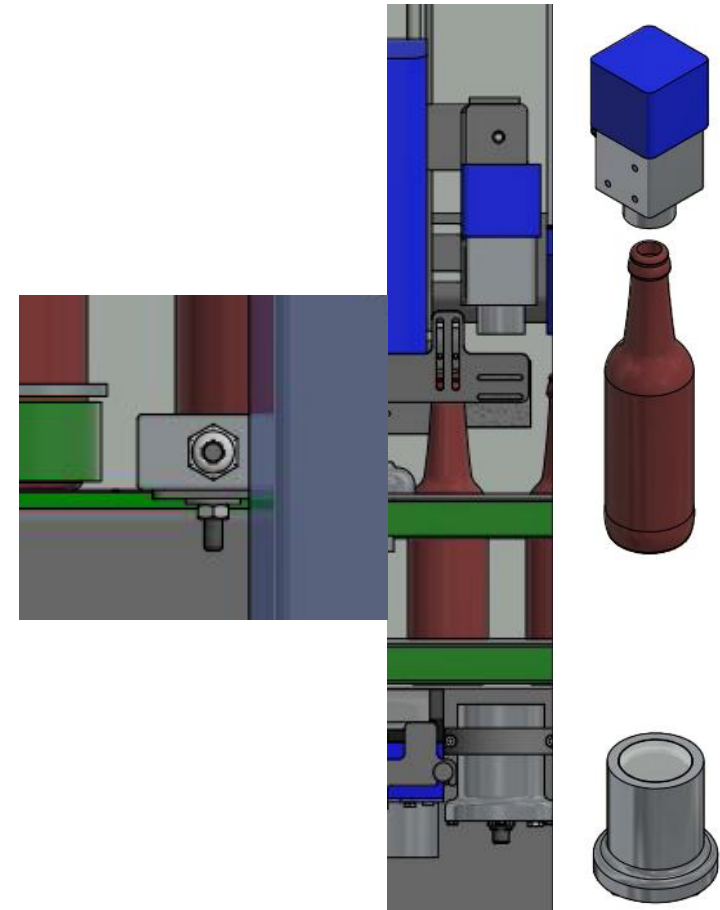
## Thread

- Quadruple camera system with mirror deflection in a compact design
- Scanned area in the transmitted light process of approx. 360°
- Detection of
  - ✓ defects
  - ✓ cracks
  - ✓ underchip
- Special inspection algorithm for thread processing in an overall picture



## Residual liquid inspection

- Infrared technology detects oils and paints
- Motorized adjustment using the height adjustment of the bottom inspection
- High frequency technology detects residual lye
- HF lye inspection directly above the chain, thanks to the new design of the empty bottle inspector



Presentation of the individual stations

### **Bottle sizes in the standard version**

- Height from 100 mm to 400 mm
- Diameter from 20 mm to 105 mm

### **Performance**

- 65.000 bottles per hour

### **Optional infeed detection**

- With contour and colour inspection using camera technology or as a more cheaper sensor solution using light barriers

### **Rejection systems for standing rejection**

- Including rejection check

# **SYSCONA**

---

KONTROLLSYSTEME GMBH

**Our team is there for you**

...and helps you with the planning,  
execution and maintenance of plants.

**Feel free to contact us at any time!**

