

## Features and Benefits

- Clean fluid to protect and extend the life of expensive components
- Minimizes downtime and maintenance costs
- Designed to handle high viscosity oils up to 25,000 SUS (see Skid Selection; next page)
- Many component combinations and variable starter options allow the flexibility to match specific user needs
- Four wheel cart option provides product portability
- Integral drip pan with drain plug protects oil from spilling on the ground
- 1620 Testpoints provided at filter base for fluid sampling
- Market leading Schroeder Excellement® synthetic filtering media provides for quick, efficient clean up with maximum element life

 Part of Schroeder Industries Energy Savings Initiative

## Description

Schroeder's X Series filtration skids are compact, self-contained filtration systems equipped with high efficiency, high capacity elements capable of removing particulate contamination and/or water quickly and economically. They supplement in-line filters whenever the existing filtration is incapable of obtaining the desired ISO cleanliness level.

It is not uncommon for viscosity to be overlooked when specifying an off-line filtration unit. The results of this oversight can severely affect system efficiency and longevity, and render the filtration system useless when high viscosity fluid causes the filter to be in constant bypass. Schroeder considers maximum fluid viscosity, (at the minimum operating temperature) in conjunction with flow to properly size the pump and motor.

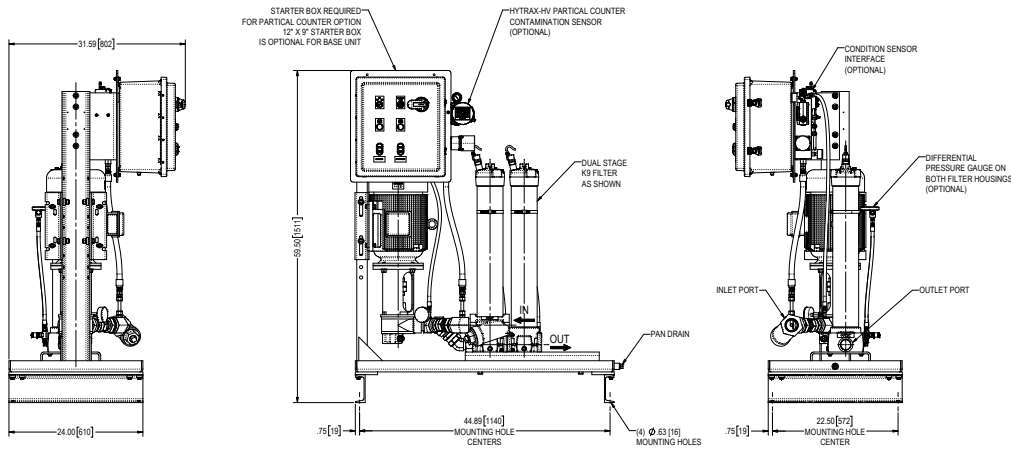
Standard X Series skids (X2 and X7) include a hydraulic pump, electric motor, and a QF5 housing. Standard X Series Skids (X5 and X8) include a hydraulic pump, electric motor, and dual K9 or QF5 housings. Many different component combinations provide the flexibility to match specific system viscosity, flow, and cleanliness requirements.

Schroeder's high viscosity X Series skids (X7 and X8) are designed to handle fluids that have a viscosity as high as 25,000 SUS. The skids have 39" long QF5 filters to efficiently clean the viscous fluids. The filters have a high dirt-holding capacity, capable of holding almost 1000 grams of dirt depending on the element. X7 and X8 skids include a pump, motor, QF5 filter, suction strainer, and dirt indicator. Various options can account for specific user needs.

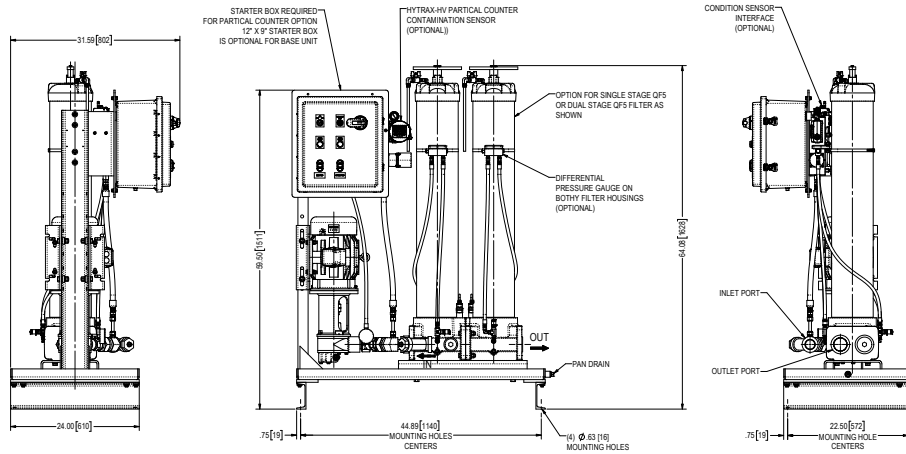
## Skid Selection

Series	Viscosity Range	Filter Housing(s)	Maximum Flow
X2	100 - 2000 SUS	(1) QF5	82 gpm (310 L/min)
X5	100 - 2000 SUS	(2) QF5 or K9 in series	82 gpm (310 L/min)
X7	100 - 25,000 SUS	(1) QF5	6 gpm (23 L/min)
X8	100 - 25,000 SUS	(2) QF5 in parallel	30 gpm (114 L/min)

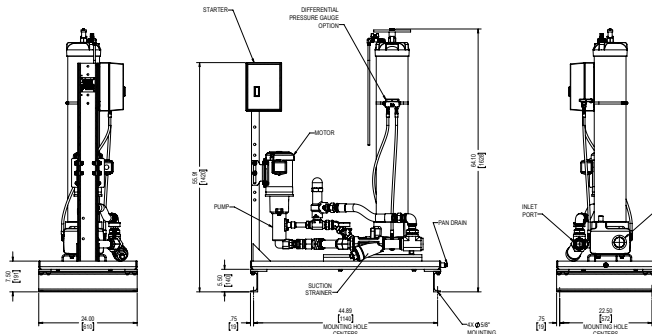
**Dual K9 Filter Version (Series X5)**



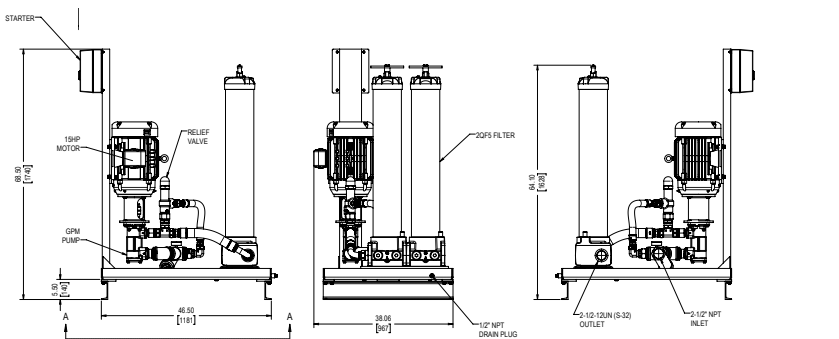
**Dual QF5 Filter Version (Series X5)**



**Single QF5 Filter Version (X7); For High Viscosity (up to 25,000 SUS)**



**Dual QF5 Filter Version (X8); For High Viscosity (up to 25,000 SUS)**



Metric dimensions in ( ).

- CS 1000
- CS 1939
- CSI-C-11
- HY-TRAX®
- RBSA
- CSM
- FCU
- MCS
- AS
- SMU
- CTU
- EPK
- Trouble Check Plus
- HMG2500
- HMG4000
- ET-100-6
- HTB
- RFSA
- HFS-BC
- HFS-15
- MFD-BC
- MFS, MFD
- HY-TRAX® Retrofit System
- MFD-MV
- MFS-HV
- AMS, AMD
- FS
- AMFS
- KLS, KLD
- KLCO
- MCO
- AKS, AKD
- LSN, LSA, LSW
- X Series**
- OLF Compact
- OLF
- OLF-P
- NxTM
- VEU-F
- VMU
- IXU
- Triton-A
- Triton-E
- NAV
- SVD01
- OXS
- Appendix

## Specifications

<b>Flow Rating:</b>	Up to 82 gpm (310 L/min)
<b>Temp. Range:</b>	0°F to 180°F (-17°C to 82°C)
<b>Bypass Valve Setting:</b>	50 psi (3.5 bar) for skid series X2, X5, X7, and X8
<b>Fluid Viscosity:</b>	Up to 25,000 SUS (see Skid Selection; previous page)
<b>Compatibility:</b>	All petroleum based hydraulic fluids. Contact Schroeder for use with other fluids, including ester and skydrol.
<b>Pump:</b>	<b>X2-X5:</b> Continuous duty gear pump with integral 150 psi relief. Flow dependent on skid series and motor. Refer to table below. <b>X7-X8:</b> Positive displacement rotary screw pumps
<b>Motor:</b>	Horsepower dependent on skid series and flow. Refer to table below.
<b>Porting:</b>	Dependent on flow. Refer to table below.

## Pump and Motor Data

Skid Series	Flow (gpm)	Motor (hp)	Skid Series	Flow (gpm)	Motor (hp)
X2	17	3	X7	06	2
	37	5			
	60	10			
	82	10			
X5	17	5	X8	30	15
	37	10			
	60	10			
	82	15			

## Porting Data

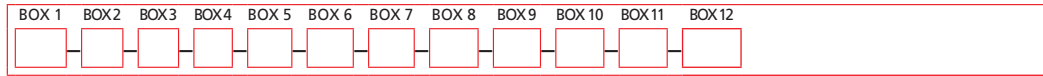
Model	Flow (gpm)	Inlet Port Sizes	Outlet Port Sizes with K9 Filters	Outlet Port Sizes with Q39 Filters
X2	17	1.50" NPT	-	#32 SAE (2")
X2	37	2" NPT	-	#32 SAE (2")
X2	60	2" NPT	-	#32 SAE (2")
X2	82	2" NPT	-	#32 SAE (2")
X5	17	1.50" NPT	#24 SAE (1.50")	#32 SAE (2")
X5	37	2" NPT	#24 SAE (1.50")	#32 SAE (2")
X5	60	2" NPT	#24 SAE (1.50")	#32 SAE (2")
X5	82	2" NPT	-	#32 SAE (2")
X7	06	1.50" NPT	-	#32 SAE (2")
X8	30	2.50" NPT	-	#32 SAE (2")

## Weight Data

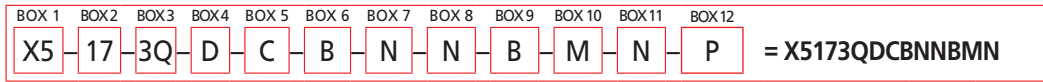
Skid Series	Flow (gpm)	Weight (lb)*	Skid Series	Flow (gpm)	Weight (lb)*
X2	17	311-504	X7	06	Contact factory
	37	348-577			
	60	Contact factory			
	82	597-705			
X5	17	396-684	X8	30	Contact factory
	37	497-849			
	60	Contact factory			
	82	947-1054			

\*Weight dependent on options chosen.

## How to Build a Valid Model Number for a Schroeder X Series Filter Skid:



**Example:** NOTE: One option per box



BOX 1	BOX 2	BOX 3		BOX 4	BOX 5	BOX 6	
Model	Flow (gpm)	K9 Filter 3K	QF5 Filter 39Q	Element Media 1st Filter	Element Media 2nd Filter (omit for X2 and X7 skids)	Seal Material	
X2	17		3Q	A = 1 Z Micron	N = NA	B = Buna (Standard) H = EPR V = Viton®	
	37		3Q	B = 3 Z Micron	A = Z1 (K or Q)		
	60		3Q	C = 5 Z Micron	B = Z3 (K or Q)		
	82		3Q	D = 10 Z Micron	C = Z5 (K or Q)		
X5	17	3K	3Q	E = 25 Z Micron	D = Z10 (K or Q)		<b>Deeper Pleats</b>
	37	3K	3Q	M = QPMLZ1	E = Z25 (K or Q)		
	60		3Q	P = QPMLZ3	M = QPMLZ1		
	82		3Q	R = QPMLZ5	P = QPMLZ3		
X7	06		3Q	S = QPMLZ10	R = QPMLZ5	<b>Water Removal</b>	
X8	30		3Q	T = QPMLZ25	S = QPMLZ10		
				W = W	T = QPMLZ25		
					W = W		

BOX 7	BOX 8	BOX 9	BOX 10
Power	Motor Frame	Starter Control Options	Dirt Alarm®
N = 230/ 460 VAC 3 PH. E = 575 VAC 3 PH.	N = TEFC W = Washdown (NEMA Design B)	N = None A = 230 VAC B = 460 VAC E = 575 VAC	N = D5 Indicator on Filter Cap G = Differential Pressure Gauge M = MS11 Electric Cartridge C = Differential Pressure Gauge with Electric Switch
BOX 11	BOX 12		
Miscellaneous Options	Condition Monitoring		
N = None C = Mobile	P = Particle Counter (oils to 3500 SUS) CSI = CSI-C-11 option CSI-W = CSI-C-11with TWS-C Option WD = Water Sensor with Display Omit = No Condition Monitoring Options		

Note: Vacuum gauge and suction strainer comes standard on all available models.

## Model Number Selection

### NOTES:

Box 1.  
Z1 media not offered for use in 500 to 2000 SUS filtration skids. Contact factory for specific applications. (X2, X5) Z1 and Z3 media not offered for use in 2000 to 5000 SUS filtration skids. Contact factory for specific applications.

Boxes 4 & 5.  
Z1 and Z3 media not offered for use in 2000 to 5000 SUS filtration skids. Contact factory for specific applications. All elements are singular construction (no stacked elements). QPML elements only available in the QF5 housing. X2 and X7 skids have one filter housing, box 5. X8 skid has filters in parallel. Box 4 & 5 must have same micron rating.

Box 7.  
575 will be built to CSA standards. (E) X7 and X8 only available with 230/460 VAC 3 phase motor.

Boxes 9 and 10.  
Motor starter control option – C-series, non-disconnect shut-off, "motor on" light, electrical indicator "change element" light, and type 4x wash down enclosure. Contact factory for additional custom control options.

Particle Counter not available for X7 or X8.

For replacement element part numbers, please see "Appendix Section - Replacement Elements" of this catalog.