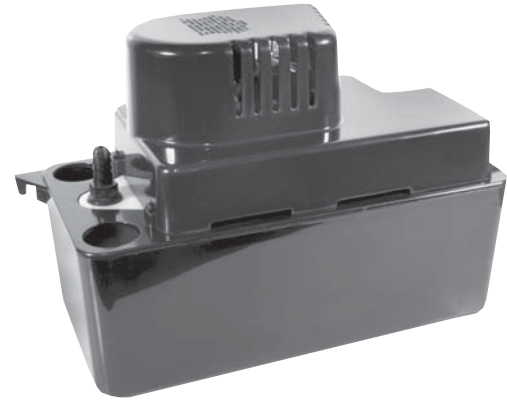




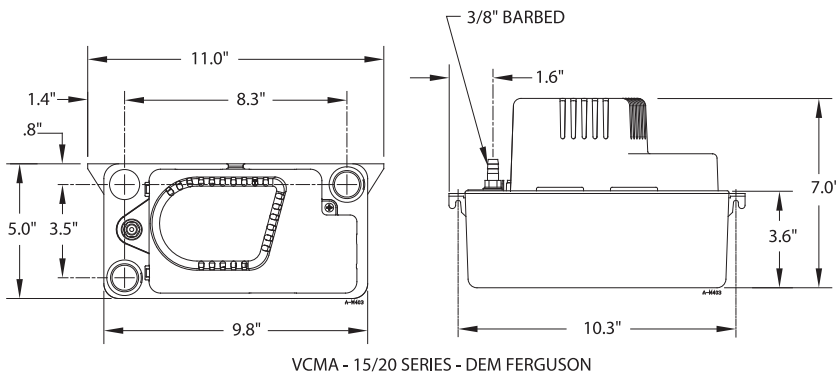
CONDENSATE PUMPS (PSCP SERIES)

Product Features

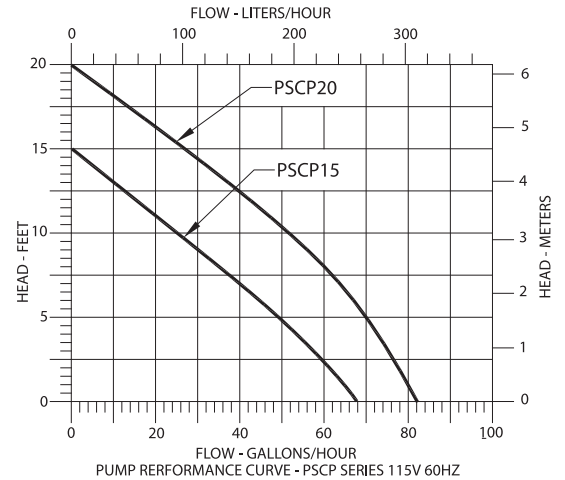
- Automatic snap-action switch
- 1/2 gallon rustproof, high impact ABS tank
- Removable 3/8" barbed check valve
- New generation float arm for enhanced reliability
- Reversible tank cover with 3 inlet drain holes for flexible installation
- Intermittent liquid temp. up to — 120°F
- Compact design for easy installation
- 6' cord with 3-pronged plug
- Thermal overload protection
- One year limited warranty
- Pump is UL and CSA listed with thermal protected motor



PFCP15



VCMA - 15/20 SERIES - DEM FERGUSON



PUMP PERFORMANCE CURVE - PSCP SERIES 115V 60HZ



Specifications

Model	Listing(s)	HP	Volts	Hz	Amps	Running Watts	Gallons per Hour at Ht.					Weight (lb.)
							1'	5'	9'	15'	Shut Off	
PSCP15	UL/CSA	1/50	115	60	1	60	65	50	30	—	15'	4.4
PSCP15WS	UL/CSA	1/50	115	60	1	60	65	50	30	—	15'	4.4
PSCP15WS20T*	UL/CSA	1/50	115	60	1	60	65	50	30	—	15'	5.5
PSCP20WS	UL/CSA	1/30	115	60	1.5	73	80	70	55	25	20'	5.0
PSCP20WS20T*	UL/CSA	1/30	115	60	1.5	73	80	70	55	25	20'	5.0
PSCP20WS230	UL/CSA	1/30	230	50/60	0.5	75	80	70	55	25	20'	6.0

*Includes 20' of 3/8" ID vinyl tubing