

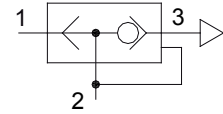
Copper free aluminum alloy quick exhaust valves - VSR serie

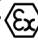

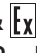

Valvole di scarico rapido in alluminio esente rame - serie VSR

Enables air to be exhausted quickly from air reservoirs and cylinders allowing higher cylinder speeds to be achieved. Simple, compact design and construction that grants for reliability in operations . Body in copper free aluminum alloy allows the use in environment with corrosive environments.

Choice of plastic materials make this product suitable for a wide range of working temperatures. Valves can be used in every position , but for a prompt fluid discharge it is suggested to connect them as near as possible to the cylinder.

Connection 1 is air inlet , connection 2 is air use and connection 3 is the exhaust.



- ATEX 2014/34/UE  II 2G Ex h IIC T6/T5 Gb X
-  &  approved II 2D Ex h IIIC T85°C/T100°C Db X
- SIL 3 - IEC 61508 

Consentono un rapido scarico dell'aria da serbatoi e cilindri permettendo il raggiungimento di elevate velocità del cilindro.

Sistema e struttura semplici e compatti garantiscono un funzionamento altamente affidabile. Il corpo in alluminio esente rame consente l'utilizzo in ambienti corrosivi.

La scelta di differenti materiali plastici rendono utilizzabile questo prodotto in un'ampia gamma di temperature. Le valvole possono essere montate in qualunque posizione, ma per un'efficace evacuazione devono essere piazzate il più vicino possibile al cilindro.

La connessione 1 serve per l'alimentazione, la due è l'utilizzo e la 3 è lo scarico.

ATEX 2014/34/UE  II 2G Ex h IIC T6/T5 Gb X
II 2D Ex h IIIC T85°C/T100°C Db X

- Approvato  ed 
- Approvato SIL 3 - IEC 61508 

Technical features:

Caratteristiche tecniche:

- **Medium : compressed air or inert gases, filtered, lubricated and non lubricated**

Fluido : aria compressa o gas inerti, filtrata, lubrificata e non lubrificata

- **Operating pressure : 2/12bar - special execution available 18bar**

Pressione d'esercizio : 2/12bar - disponibile esecuzione speciale 18bar

- **Operating temperature : -20°C up to 80°C (NBR); -25°C up to 90°C (FKM);
-40°C up to 80°C (EPDM); -60°C up to 90°C (FVMQ / HNBR)**

Temperatura di esercizio: -20°C + 80°C (NBR); -25°C + 90°C (FKM)

-40°C + 80°C (EPDM); -60°C + 90°C (FVMQ / HNBR)

- **Materials : Body aluminum alloy; Element in PU or low temperature PU**

Materiali : Corpo in alluminio; elemento in PU o PU a bassa temperatura

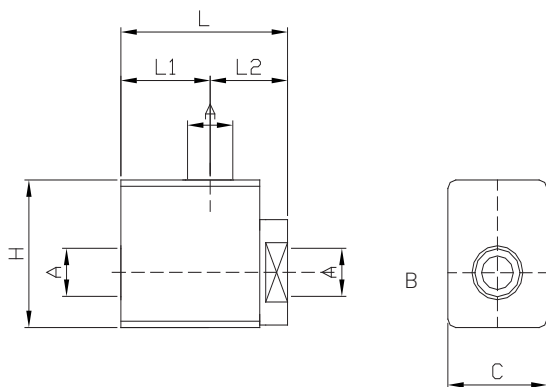
MODEL MODELLO	THREAD FILETTO	Dn mm	ELEMENT MATERIALE	WP PN	CV IN	CV OUT
VSR02NAL*	1/8" NPT	8	PU or LT PU	2-12BAR	-	-
VSR04NAL*	1/4" NPT	8	PU or LT PU	2-12BAR	1.2	2.0
VSR06NAL*	3/8" NPT	10	PU or LT PU	2-12BAR	3.6	6.9
VSR08NAL*	1/2" NPT	12	PU or LT PU	2-12BAR	4.3	6.9
VSR12NAL*	3/4" NPT	19	PU or LT PU	2-12BAR	10.0	11.3
VSR16NAL*	1" NPT	19	PU or LT PU	2-12BAR	10.5	15.7

*Refers to seals type. Add:
FK→FKM NB→NBR LT→EPDM FL→FVMQ HN→HNBR

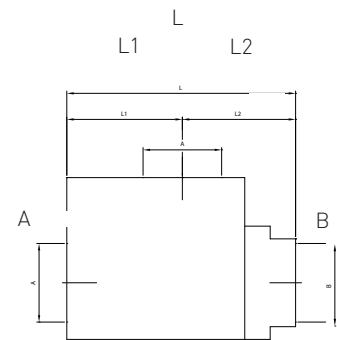
Overall dimension

Dimensioni di ingombro

VSR02, VSR04



VSR06, VSR08, VSR12, VSR16



MODEL MODELLO	THREAD FILETTO	B	L mm	L1 mm	L2 mm	H mm	C mm
VSR02NAL*	1/8" NPT	1/4" NPT	42	22,5	19,5	35	25
VSR04NAL*	1/4" NPT	1/4" NPT	42	22,5	19,5	35	25
VSR06NAL*	3/8" NPT	1/2" NPT	56	33	23	53	40
VSR08NAL*	1/2" NPT	1/2" NPT	56	33	23	53	40
VSR12NAL*	3/4" NPT	3/4" NPT	99	50	49	70	49
VSR16NAL*	1" NPT	1" NPT	99	50	49	70	49

*Refers to seals type. Add:
FK→FKM NB→NBR LT→EPDM FL→FVMQ HN→HNBR