



LF Series - 160-1000W Yb:Fiber Laser Welders

The LF Series fibers lasers offer the precise control needed for small component welding. A large touchscreen pendant enables clear visibility of process schedule parameters, and an intuitive interface enables quick and easy programming.

Key features LF Series - 160-1000W Yb:Fiber Laser Welders

- > Integrated laser system - Complete system with laser engine, controller, touchscreen interface and chiller (if necessary) integrated into chassis.
- > Micro welding - The laser is available in either single or multi-mode configuration. Precise control of the laser's pulse width and peak power enables fine micro welding processes. Penetrations up to 4 mm in steels, titanium and nickel alloys are possible using continuous mode operation.
- > Spot and seam welding - 10 segment pulse shaping enables best quality spot welding results. Ramp up and ramp down feature controls welding results at the ends of seam welds.
- > Excellent power stability - Fine applications require high stability of the laser source for reliable processing. The LF Series offers excellent power and pulse to pulse stability with an internal air-to-water cooling mechanism which maintains stability irrespective of ambient air temperature.
- > Accessories - Full range of focus heads including inline, 90 degree with process viewing via a camera, and through the lens illumination options. Galvo heads are also available. Ultra compact heads are available if space is a premium.

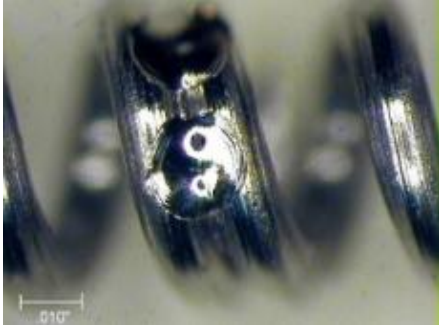
Specifications LF Series - 160-1000W Yb:Fiber Laser Welders 1/2

Maximum output	160 Watts (LF-160A) (M2 = multimode)	200 Watts (LF-200A) (M2 = 1.1 or multimode)	300 Watts (LF-300A) (M2 = 1.1)
Beam quality	M2 = 1.1 or multimode	M2 = 1.1 or multimode	M2 = 1.1 or multimode
Pulse width	0.02-99 ms	0.02-99 ms	0.02-99 ms
Pulse width resolution	0.001 ms	0.001 ms	0.001 ms
Repetition frequency	1-50.000 Hz, CW	1-50.000 Hz, CW	1-50.000 Hz, CW
Oscillation wavelength	1070 nm	1070 nm	1070 nm
Positioning guide beam	Built-in visible laser (red)	Built-in visible laser (red)	Built-in visible laser (red)
Output stability over operating temperature range	± 3%	± 3%	± 3%
Voltage	240 V +/- 10% VAC 50-60 Hz single phase	240 V +/- 10% VAC 50-60 Hz single phase	240 V +/- 10% VAC 50-60 Hz single phase
Current	25 A RMS	25 A RMS	25 A RMS
Cooling	Air Cooling	Air Cooling	Air Cooling
Operating temperature (?C)	5 - 40	5 - 40	5 - 40
Operating humidity	5-85% RH (non condensing)	5-85% RH (non condensing)	5-85% RH (non condensing)
External communication (RS232)	Baud Rate: Variable 9600-115200)	Start bits: 1	Data bits: 8
Certification	CE Approved	CE Approved	CE Approved
Dimensions HxWxD (mm)	939,8 x 520,7 x 825,5	939,8 x 520,7 x 825,5	939,8 x 520,7 x 825,5
Weight (in kg)	136,3	136,3	136,3

Specifications LF Series - 160-1000W Yb:Fiber Laser Welders 2/2

Maximum output	400 Watts (LF-400A) (M2 = 1.1)	500 Watts (LF-500A) (M2 = 1.1 or multimode)	1000W (LF-1000A) (M2 = 1,1 or multimode)
Beam quality	M2 = 1.1 or multimode	M2 = 1.1 or multimode	M2 = 1.1 or multimode
Pulse width	0.02-99 ms	0.02-99 ms	0.02-99 ms
Pulse width resolution	0.001 ms	0.001 ms	0.001 ms
Repetition frequency	1-50.000 Hz, CW	1-50.000 Hz, CW	1-50.000 Hz, CW
Oscillation wavelength	1070 nm	1070 nm	1070 nm
Positioning guide beam	Built-in visible laser (red)	Built-in visible laser (red)	Built-in visible laser (red)
Output stability over operating temperature range	± 3%	± 3%	± 3%
Voltage	240 V +/- 10% VAC 50-60 Hz single phase	240 V +/- 10% VAC 50-60 Hz single phase	240 V +/- 10% VAC 50-60 Hz single phase
Current	25 A RMS	25 A RMS	25 A RMS
Cooling	Air Cooling	Air Cooling	Air Cooling
Operating temperature (?C)	5 - 40	5 - 40	5 - 40
Operating humidity	5-85% RH (non condensing)	5-85% RH (non condensing)	5-85% RH (non condensing)
External communication (RS232)	Parity: Even	Stop bits: 1	Flow control: none
Certification	CE Approved	CE Approved	CE Approved
Dimensions HxWxD (mm)	939,8 x 520,7 x 825,5	939,8 x 520,7 x 825,5	939,8 x 520,7 x 825,5
Weight (in kg)	136,3	136,3	136,3

Product applications LF Series - 160-1000W Yb:Fiber Laser Welders



Medical spring attachment



Needle cutting



Medical component assembly

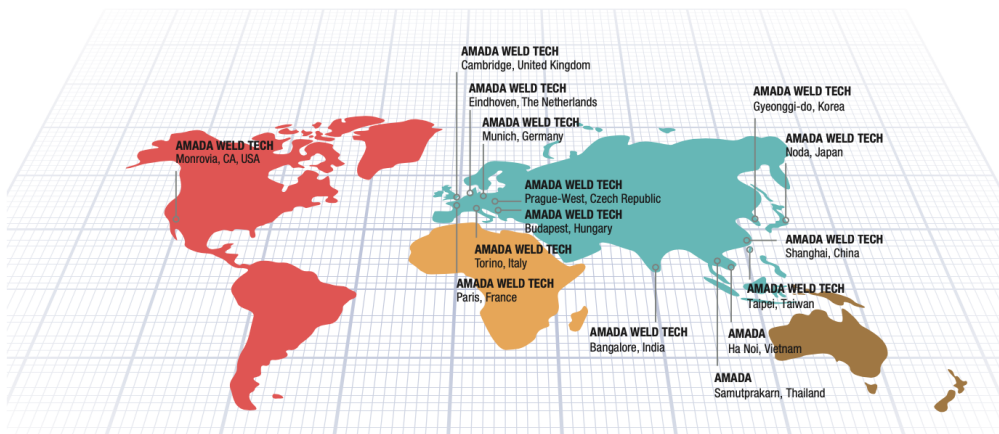
AMADA®

AMADA WELD TECH

OUR TECHNOLOGIES



OUR SALES OFFICES



AMADA WELD TECH GmbH
 Lindberghstrasse 1 • DE-82178 Puchheim, Germany
 T: +49 (0) 89 83 94 030 • Fax : +49 (0) 89 839403 68
 infode@amadaweldtech.eu • www.amadaweldtech.eu
 ISO 9001 Certified Company

Please contact our worldwide network here:



All data, images and text are subject to change at any time. AMADA WELD TECH GmbH reserves the right to change, modify, delete and add technical specifications and product details at any time without prior notification. © 2020 AMADA WELD TECH GmbH.

WWW.AMADAWELDTECH.EU