

Radial piston pumps

Type BRK11

heavy version

up to **1000 bar**

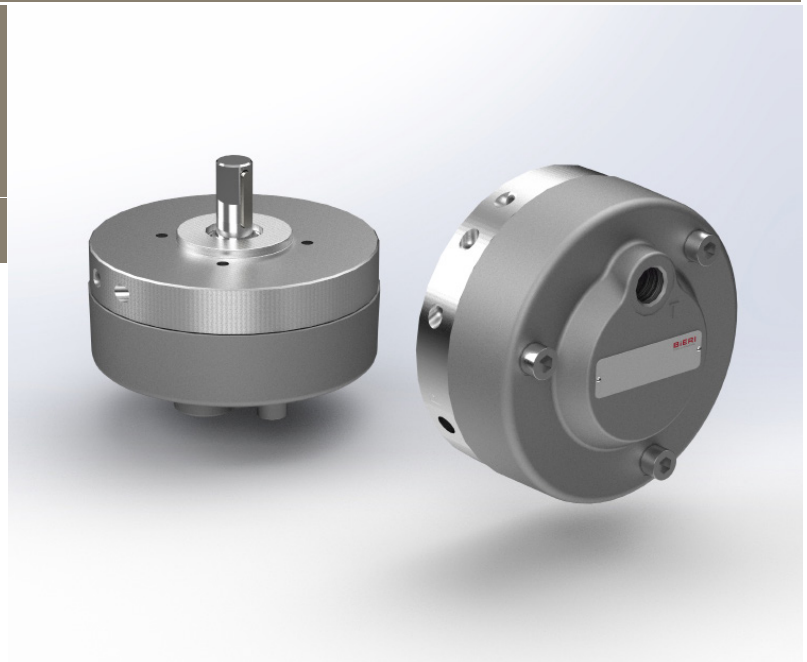
0.47 to 2.71 cm³/rev

500 bar → see data sheet BRK501/502

700 bar → see data sheet BRK701/702

Features

- High volumetric efficiency
- Selfventing and selfpriming
- Low pulsation
- Combination with gear pump possible (see separate technical data sheet BKP)

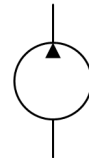


Applications

- Specially designed for demanding applications with continuous pressures up to 1000 bar → long economic lifetime!
- Machine tools
- Clamping device
- Power units (e.g. for presses)
- Test benches
- Accumulator charging systems
- Lifting and advancing systems

Design

- Radial piston pump of modular design
- With valve controlled pumping elements
- With 3 or 5 pumping elements



Technical data

Hydraulic fluid	mineral oil according to DIN 51524 (other fluids on request)	
Fluid temperature range	-20 to 80 °C	
Ambient temperature range	-30 to 50 °C	
Viscosity range	5 to 220 mm ² /s	
Max. operating pressure	1000 bar	
Operating pressure suction side	-0.2 bar to 0.5 bar gauge pressure	
Displacement volume	0.47 to 2.71 cm ³ /rev	
Filtration (recommendation)	according to NAS 1638 class 6 resp. ISO/DIN 4406 17/15/12	
Axial force onto driving shaft	can't be taken up	
Radial force onto driving shaft	on request	
Max. rotation speed	2000 rpm	
Direction of rotation	any	
Suction height	max. 500 mm	
Weight	see overview "product information"	
Materials	pressure flange:	high-strength steel
	driving shaft:	steel
	cover:	diecast aluminium

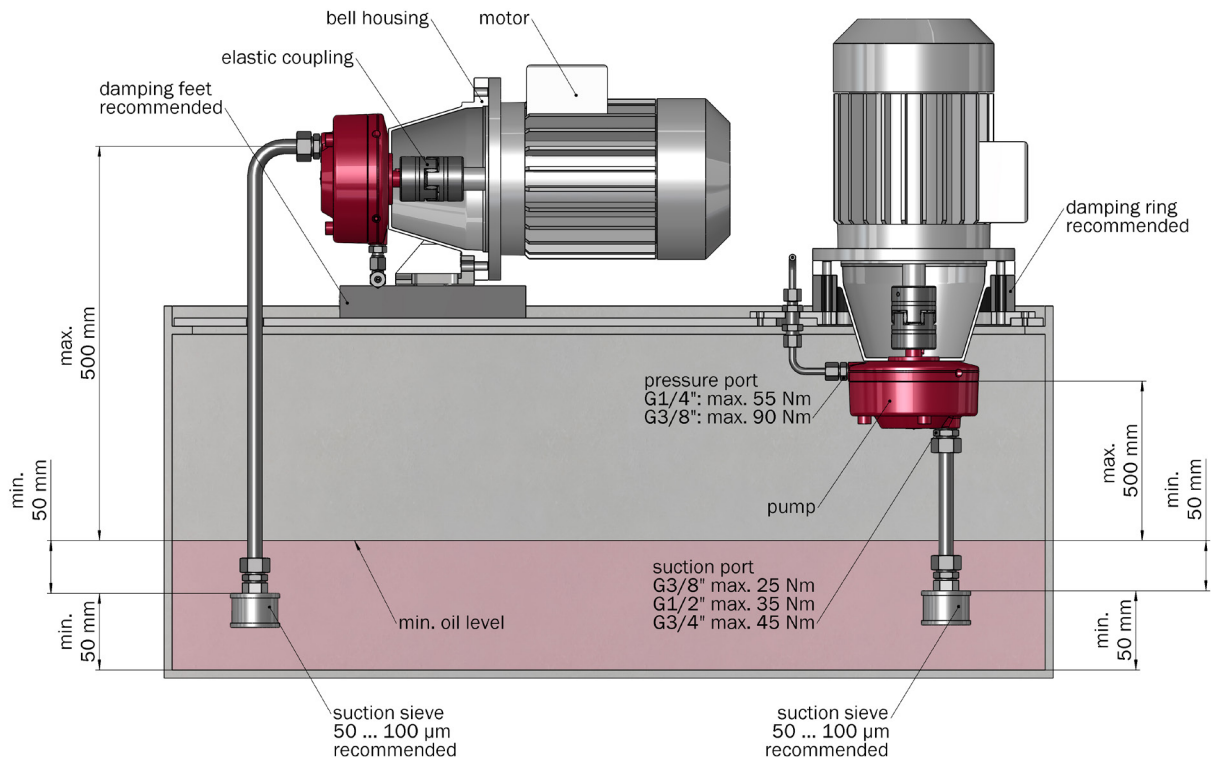
Type BRK11

heavy version
up to 1000 bar
0.47 to 2.71 cm³/rev

Type code

Example	BRK	11	-	0,47	-	1000	-	V	-	C		00
Radial piston pumps												
Size	11											
Displacement volume [cm³/rev]	See overview Product information											
Max. operating pressure [bar]	See overview Product information											
Seal material	V FKM other seal materials on request											
	Design 00 ... 99 For internal purposes											
	Index Please leave blank For internal purposes											
	Design revision For internal purposes											

Mounting



Type BRK11heavy version
up to 1000 bar
0.47 to 2.71 cm³/rev**Product information**

size	displacement volume [cm ³ /rev]	max. operating pressure [bar]	number of pumping elements	weight [kg]	max. torque* [Nm]	max. power* [kW]	part no.
11	0.47	1000	3	7.0	9.84	1.55	3675409
11	0.68	1000	3	7.0	14.18	2.23	3675413
11	1.13	1000	5	7.5	22.95	3.60	3675442
11	1.21	1000	3	7.0	25.20	3.96	3675448
11	1.53	1000	3	7.0	31.89	5.01	3675454
11	1.88	900	3	7.0	35.44	5.57	3675467
11	2.01	1000	5	7.5	40.80	6.41	3675470
11	2.54	900	5	7.5	46.47	7.30	3677017
11	2.71	850	3	7.0	48.20	7.57	3677035

* at n = 1500 rpm; $\eta_t = 0.8$; $p = p_{\max}$ **Calculation of driving motor power**

$$P = \frac{p \cdot V_g \cdot n \cdot k}{\eta_t \cdot 600 \cdot 10^3}$$

P = driving power [kW]
 p = operating pressure [bar]
 V_g = displacement volume [cm³/rev]
 n = speed [rpm]
 η_t = overall efficiency approx. 0.8

k = pulsation factor
 - with 3 pumping elements: k approx. 1.05
 - with 5 pumping elements: k approx. 1.02

Calculation of driving motor torque

$$M = \frac{p \cdot V_g}{62,8 \cdot \eta_t}$$

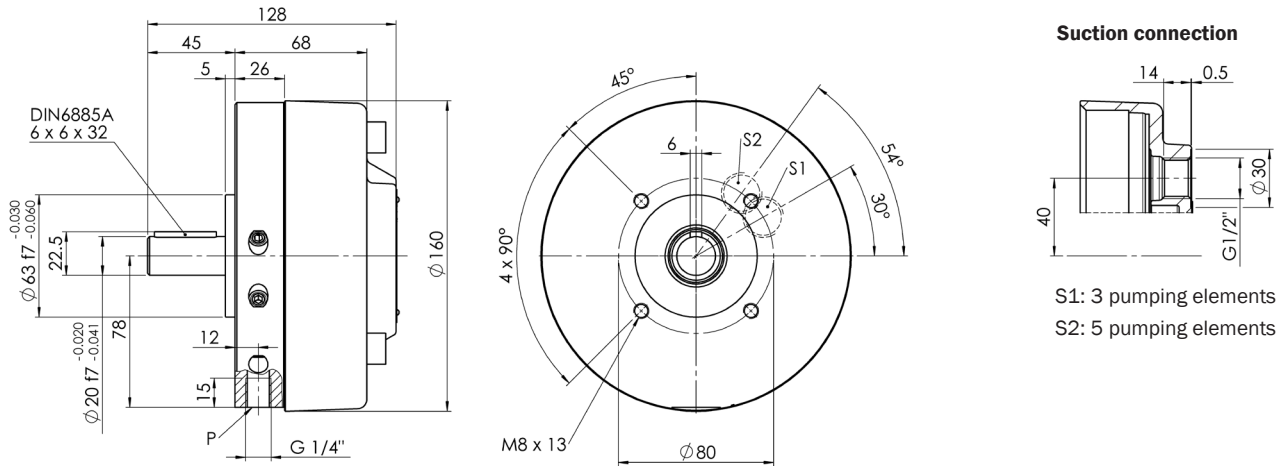
M = torque [Nm]

Type BRK11

heavy version
up to 1000 bar
0.47 to 2.71 cm³/rev

Dimensional drawings

Size BRK11



Spare parts

item description	part no.
seals kit for BRK11 FKM	4541677
seals kit for BRK11 NBR	4541679

Bieri Hydraulik AG

Könizstrasse 274
CH-3097 Liebefeld
Tel. +41 31 970 09 09 | Fax +41 31 970 09 10
info@bierihydraulics.com | www.bierihydraulics.com
4/4

The information in this brochure relates to the operating conditions and applications described.
For applications and operating conditions not described, please contact the relevant technical department.
Subject to technical modifications.

BRK11_EN_26L21