

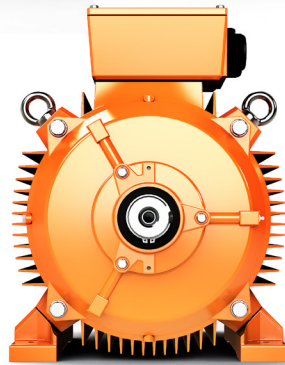
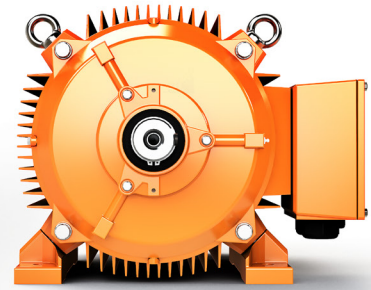
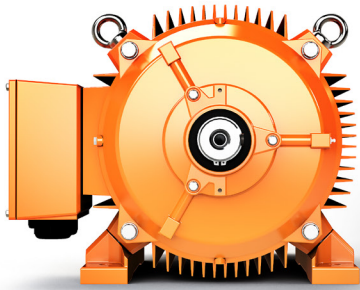
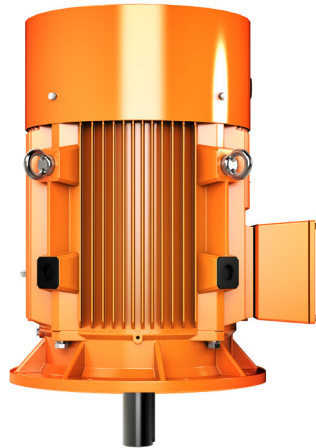
Phone: 1300 553 552

Email: Pope@rototech.com.au

E-series

PREMIUM THREE PHASE MOTORS

- Alloy Multi-Mount 63-112
- Cast Iron Multi-Mount 132-280
- Cast Iron Integral Feet 315-355
- Brake Motors 63-315



INSULATION

- CLASS F, 155°C WIRE & SLOT INSULATION
- INVERTER DUTY WINDING STANDARD



PROTECTION

- IP55 WEATHERPROOF PROTECTION STANDARD (IP66 OPTIONAL)
- PTC THERMISTOR PROTECTION ALL SIZES
63-132 FRAME MOTORS MANUFACTURED BEFORE 2014 NOT FITTED WITH PTC THERMISTORS. (I)
- DURABLE SEALS ON BOTH DE & NDE SHAFTS
- NYLON CABLE GLANDS (EMC OPTIONAL)



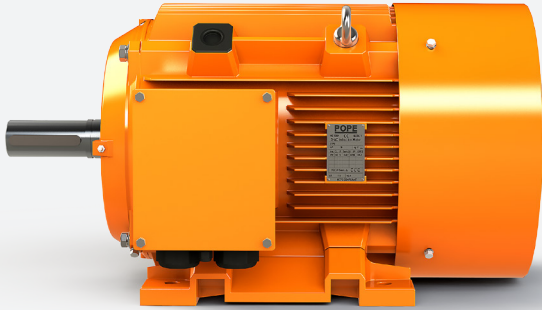
MULTI-MOUNT

- RELOCATING THE BOLT ON FEET ALLOWS TERMINAL BOX ON LEFT/TOP/RIGHT OR UNBOLT FOR V1 & B5 FLANGE. (63-280 FRAME)
- BOLT ON FAIL-SAFE BRAKE KIT, IP55 OR OPTIONAL IP66 BRAKE COVER

POPE E-SERIES ELECTRIC MOTOR & BRAKE MOTORS 63 TO 355 FRAME, LOW VOLTAGE



E-SERIES ELECTRIC MOTORS

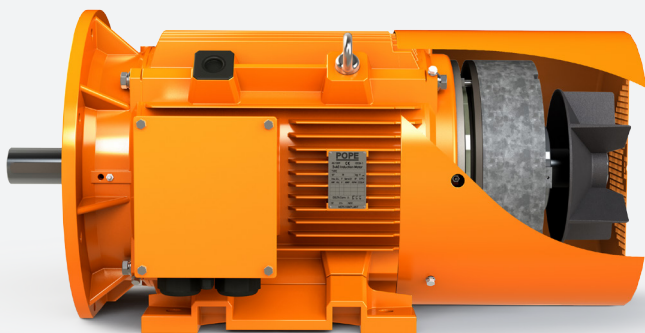


E-SERIES ELECTRIC MOTOR
IP55 INGRESS PROTECTION

E-Series Motor Features

Cast Iron Frame Sizes 132 - 355	✓
Alloy Frame Sizes 63 - 112	✓
Ingress Protection IP55 IP66 Optional	✓
Insulation Class F 155°C Class H Optional	✓
Bolt On Feet Multi-Mount Sizes 63 - 280 Size 315 Fixed Feet- Left, Right, Top Box Customer Choice	✓
MEPS2 High Efficiency Approved	✓
Cooling Fan Glass Reinforced Polypropylene Steel / Cast Iron Cooling Fan Optional	✓
PTC Thermistors Sizes 63 - 355 Standard (1)	✓
Voltage 380-415V 50Hz & 440-480V 60Hz 1000V Motors also Stocked	✓
Sealed for Life Bearings Sizes 63 - 180	✓
Re-Greasable Bearings Sizes 200 - 355	✓
240V Anti-Condensation Heaters	Option
High Build Primer & Enamel Paint Standard 2 Pack Primer & Paint optional	✓
Speed Controller Ready	✓
Insulated Bearing Sizes 160 - 355	Option
Grounding Brush	Option
Forced Cooling Kit	Option

BRAKE MOTORS IP55 AND IP66



E-SERIES BRAKE MOTOR
BUILT IN ADELAIDE
IP55 BRAKE MOTOR PICTURED

Brake Motor Parts

Fail-Safe DC Brake Coil Assembly	✓
Cooling Fan Glass Reinforced Polypropylene Steel / Cast Iron Cooling Fan Optional	✓
Extended Fan Cowl	✓
AC to DC Rectifier Included	✓
Electrically Encapsulated Brake Coil	✓
Adjustable Torque Options	✓
Class H 180°C Insulated Brake Coil	✓
Separate Auxiliary Box For Brake Connection	Option
IP66 Steel Brake Cover	Option
Oversize Brake	Option
Manual Release Handle	Option

PERFORMANCE DATA 50Hz

General					Current			Efficiency	Powerfact.	Torque	Other	
Output		Poles	Speed	Frame Size	Shaft Size	Full Load Current					F.L	Weight
kW	hp		RPM		mm	380 Volts	400 Volts	415 Volts	100%	100%	(Nm)	
						Amps			%	%	Nm	
0.06	0.08	8	640	063B-11	11	0.46	0.44	0.42	42	0.5	0.9	5
0.09	0.12	8	660	071A-14	14	0.60	0.57	0.55	44	0.55	1.3	6
0.12	0.16	4	1310	063A-11	11	0.42	0.4	0.39	65.7	0.72	0.87	4.5
0.12	0.16	6	840	063B-11	11	0.54	0.51	0.49	56	0.65	1.2	5
0.12	0.16	8	660	071B-14	14	0.71	0.67	0.65	49	0.55	1.6	6.5
0.18	0.2	2	2720	063A-11	11	0.53	0.5	0.48	66.5	0.8	0.63	4.5
0.18	0.2	4	1310	063B-11	11	0.62	0.59	0.57	66	0.73	1.31	4.7
0.18	0.2	6	850	071A-14	14	0.75	0.71	0.68	58	0.66	1.9	6
0.18	0.2	8	645	080A-19	19	0.88	0.84	0.81	58.6	0.61	2.5	11
0.25	0.3	2	2720	063B-11	11	0.69	0.66	0.64	68.9	0.81	0.88	4.7
0.25	0.3	4	1330	071A-14	14	0.79	0.75	0.72	65.9	0.74	1.8	5.5
0.25	0.3	6	850	071B-14	14	0.95	0.9	0.87	61	0.68	2.4	6.5
0.25	0.3	8	645	080B-19	19	1.16	1.1	1.06	60.5	0.61	3.4	12
0.37	0.5	2	2740	071A-14	14	0.99	0.94	0.91	70.9	0.81	1.3	5.5
0.37	0.5	4	1330	071B-14	14	1.13	1.07	1.03	67.9	0.75	2.66	6.5
0.37	0.5	6	885	080A-19	19	1.29	1.23	1.19	66.2	0.65	3.99	10
0.37	0.5	8	670	090S-24	24	1.49	1.42	1.37	66.2	0.61	5.27	17
0.55	0.7	2	2740	071B-14	14	1.40	1.33	1.28	73.8	0.82	1.9	6.5
0.55	0.7	4	1390	080A-19	19	1.58	1.5	1.45	73.9	0.75	3.78	10
0.55	0.7	6	885	080B-19	19	1.79	1.7	1.64	65.9	0.72	5.99	12
0.55	0.7	8	670	090L-24	24	2.17	2.06	1.99	66.3	0.61	7.84	19
0.75	1	2	2840	080A-19	19	1.95	1.85	1.78	80.5	0.83	2.53	11
0.75	1	4	1390	080B-19	19	1.99	1.89	1.82	82.2	0.76	5.15	13
0.75	1	6	910	090S-24	24	2.19	2.08	2.00	77.7	0.72	7.9	19
0.75	1	8	680	100LA-28	28	2.56	2.43	2.34	73.5	0.67	10.54	28
1.1	1.5	2	2840	080B-19	19	2.59	2.46	2.37	82.2	0.84	3.72	12
1.1	1.5	4	1390	090S-24	24	2.97	2.82	2.72	83.8	0.77	7.6	20
1.1	1.5	6	910	090L-24	24	3.12	2.96	2.85	79.9	0.73	11.55	21
1.1	1.5	8	680	100LB-28	28	3.51	3.33	3.21	76.3	0.69	15.4	29
1.5	2	2	2840	090S-24	24	3.48	3.31	3.19	84.1	0.84	5	20
1.5	2	4	1390	090L-24	24	3.66	3.48	3.35	85	0.79	10.3	23
1.5	2	6	920	100L-28	28	3.86	3.67	3.54	81.5	0.75	15.6	28
1.5	2	8	690	112M-28	28	4.56	4.33	4.17	78.4	0.69	20.78	36
2.2	3	2	2840	090L-24	24	4.87	4.63	4.46	85.6	0.85	7.4	23
2.2	3	4	1410	100LA-28	28	5.11	4.85	4.67	86.4	0.81	14.8	24
2.2	3	6	935	112M-28	28	5.62	5.34	5.15	83.4	0.76	22.35	36
2.2	3	8	690	132S-38	38	5.68	5.4	5.20	81	0.73	29.8	72
3	4	2	2860	100L-28	28	6.41	6.09	5.87	86.7	0.87	9.95	29
3	4	4	1410	100LB-28	28	6.79	6.45	6.22	87.4	0.82	20.2	33
3	4	6	960	132S-38	38	7.07	6.72	6.48	84.92	0.76	29.8	67
3	4	8	705	132M-38	38	7.51	7.13	6.87	82.72	0.734	40.64	85
4	5.4	2	2900	112M-28	28	8.11	7.7	7.42	87.6	0.88	13.2	36
4	5.4	4	1435	112M-28	28	8.76	8.32	8.02	88.3	0.82	26.5	41
4	5.4	6	960	132MA-38	38	9.17	8.71	8.40	86.1	0.77	39.8	79
4	5.4	8	720	160MA-42	42	9.60	9.12	8.79	84.53	0.75	53.1	118
5.5	7	2	2900	132SA-38	38	10.74	10.2	9.83	88.52	0.88	18	68
5.5	7	4	1440	132S-38	38	11.12	10.56	10.18	89.5	0.84	36.5	72
5.5	7	6	960	132MB-38	38	12.22	11.61	11.19	87.7	0.78	54.7	91
5.5	7	8	720	160MB-42	42	12.97	12.32	11.87	86	0.75	72.9	131
7.5	10	2	2900	132SB-38	38	13.78	13.09	12.62	89.5	0.92	24.7	74
7.5	10	4	1440	132M-38	38	14.86	14.12	13.61	90.2	0.85	49.74	87
7.5	10	6	970	160M-42	42	16.48	15.66	15.09	88.6	0.78	73.8	131
7.5	10	8	720	160L-42	42	17.28	16.42	15.83	87.24	0.76	99.5	156
11	15	2	2930	132M-38	38	20.67	19.64	18.93	90.8	0.89	35.8	131
11	15	2	2930	160AM-42	42	20.67	19.64	18.93	90.8	0.89	35.8	131
11	15	4	1460	132M-38	38	21.56	20.48	19.74	91.2	0.85	71.9	139
11	15	4	1460	160M-42	42	21.56	20.48	19.74	91.2	0.85	71.9	139
11	15	6	970	160L-42	42	23.38	22.21	21.41	89.82	0.80	108.3	163
11	15	8	730	180L-48	48	24.39	23.17	22.33	89	0.77	143.9	204
15	20	2	2930	160MB-42	42	27.92	26.52	25.56	91.32	0.89	48.9	139
15	20	4	1460	160L-42	42	29.20	27.74	26.74	91.8	0.85	98.1	163
15	20	6	970	180L-48	48	30.84	29.3	28.24	90.75	0.814	148	204

*For Larger Motor Sizes & High Specification. See POPE FLEXI-FRAME® Series

PERFORMANCE DATA 50HZ

General					Current			Efficiency	Powerfact.	Torque	Other	
Output		Poles	Speed	Frame Size	Shaft Size	Full Load Current					F.L	Weight
kW	hp		RPM		mm	380 Volts	400 Volts	415 Volts	100%	100%	(Nm)	
						Amps			%	%	Nm	
15	20	8	730	200L-55	55	36.57	34.74	33.48	90.2	0.76	196.2	243
18.5	25	2	2930	160L-42	42	35.04	33.29	32.09	91.9	0.9	60.3	168
18.5	25	4	1470	180M-48	48	35.45	33.68	32.46	92.2	0.86	120.1	188
18.5	25	6	980	200LA-55	55	37.09	35.24	33.97	91.3	0.83	182.1	266
18.5	25	8	730	225S-60	60	40.74	38.7	37.30	90.8	0.76	242	306
22	30	2	2940	180M-48	48	40.24	38.23	36.85	92.3	0.9	71.4	194
22	30	4	1470	180L-48	48	41.88	39.79	38.35	92.8	0.86	142.9	219
22	30	6	980	200LB-55	55	43.82	41.63	40.13	91.9	0.83	216.6	281
22	30	8	730	225M-60	60	46.3	44.4	42.8	91.2	0.78	287.8	332
30	40	2	2940	180LB-48	48	55.04	52.29	50.40	93.3	0.9	97.1	283
30	40	2	2950	200LA-55	55	55.04	52.29	50.40	93.3	0.9	97.1	283
30	40	4	1470	180LB-48	48	56.57	53.74	51.80	93.7	0.86	194.9	290
30	40	4	1470	200L-55	55	56.57	53.74	51.80	93.7	0.86	194.9	290
30	40	6	980	225M-60	60	58.66	55.73	53.72	92.55	0.84	292.3	336
30	40	8	735	250M-65	65	62.65	59.52	57.37	92.1	0.79	392.4	449
37	50	2	2950	200LB-55	55	67.63	64.25	61.93	93.4	0.89	119.8	300
37	50	4	1475	225S-60	60	67.64	64.26	61.94	93.8	0.89	239.6	336
37	50	6	980	250M-65	65	70.28	66.77	64.36	93.05	0.87	360.5	449
37	50	8	735	280S-75	75	76.60	72.77	70.14	92.9	0.79	477.5	590
45	60	2	2960	225M-55	55	81.17	77.11	74.32	93.9	0.9	144.7	336
45	60	4	1475	225M-60	60	82.09	77.99	75.17	94.0	0.89	291.6	362
45	60	6	980	280S-75	75	83.87	79.68	76.80	93.7	0.87	438.5	590
45	60	8	735	280M-75	75	92.66	88.03	84.85	93.4	0.79	580.7	655
55	75	2	2965	250M-60	60	99.64	94.66	91.24	94.1	0.91	175.8	443
55	75	4	1480	250M-65	65	99.95	94.95	91.52	95.12	0.89	354.8	462
55	75	6	980	280M-75	75	102.29	97.18	93.67	93.9	0.89	535.9	655
55	75	8	735	315S-80	80	113.75	108.06	104.15	93.7	0.81	712	935
75	100	2	2970	280S-65	65	134.77	128.03	123.40	94.61	0.9	241.1	598
75	100	4	1480	250MB-70	70	135.68	128.9	124.24	94.9	0.87	483.3	508
75	100	4	1480	280S-75	75	140.35	133.33	128.51	94.9	0.87	483.3	508
75	100	6	985	315S-80	80	141.77	134.68	129.81	94.44	0.86	723.5	968
75	100	8	735	315M-80	80	151.40	143.83	138.63	94.4	0.81	969	1139
90	120	2	2970	280M-65	65	159.95	151.94	146.46	95	0.9	289.3	682
90	120	4	1480	280M-75	75	163.26	155.1	149.49	95.2	0.88	580.7	734
90	120	6	985	315M-80	80	169.36	160.89	155.07	94.8	0.86	873.5	1089
90	120	8	735	315L-80	80	179.76	170.77	164.60	94.72	0.82	1163	1210
110	150	2	2975	315S-65	65	195.52	185.74	179.03	95.1	0.91	353	1018
110	150	4	1480	280MB-80	80	201.43	191.36	184.44	95.3	0.88	709.3	1029
110	150	4	1480	315S-80	80	201.43	191.36	184.44	95.3	0.88	709.3	1029
110	150	6	985	315L-80	80	206.46	196.14	189.05	95.11	0.86	1065	1188
110	150	8	735	315L-80	80	217.53	206.65	199.18	95.1	0.82	1422	1353
132	175	2	2975	315M-65	65	233.51	221.83	213.81	95.42	0.91	423.6	1144
132	175	4	1480	315M-80	80	240.84	228.8	220.53	95.54	0.88	851	1221
132	175	6	985	315L-80	80	246.86	234.52	226.04	95.4	0.87	1272	1298
132	175	8	740	355M-95	95	250.95	238.4	229.78	95.41	0.82	1697	1716
150	200	6	985	315L-80	85	262.11	249	240.00	95.6	0.88	1440	1380
160	215	2	2975	315L-65	65	279.71	265.72	256.12	95.51	0.92	513.6	1243
160	215	4	1480	315L-80	80	283.16	269	259.28	95.7	0.89	1031	1282
160	215	6	990	355M-95	95	290.53	276	266.02	95.61	0.88	1542	1620
160	215	8	740	355M-95	95	307.37	292	281.45	95.7	0.82	2058	1832
185	250	6	985	315L-95	85	326.32	310	298.80	95	0.9	1775	1400
200	270	2	2975	315L-65	65	348.42	331	319.04	94.8	0.92	641	1215
200	270	4	1480	315L-80	80	359.37	341.4	329.06	95	0.89	1285	1270
200	270	6	990	355M-95	95	360.53	342.5	330.12	94.7	0.88	1929	1745
200	270	8	740	355L-95	95	369.47	351	338.31	95.73	0.83	2570	1920
250	335	2	2980	355M-75	75	476.84	453	436.63	95.3	0.92	800	1705
250	335	4	1480	315L-85	85	444.53	422.3	407.04	95.3	0.9	1605	1310
250	335	4	1490	355 M-95	95	451.05	428.5	413.01	95.3	0.9	1605	1710
250	335	6	990	355L-95	95	440.00	418	402.89	94.9	0.88	2409	1940
280	375	4	1480	315L-85	85	455.79	433	417.35	95.5	0.93	1800	2300
315	420	2	2980	355L-75	75	595.79	566	545.54	95.6	0.92	1007	1850
315	420	4	1490	355L-95	95	551.58	524	505.06	95.6	0.9	2026	1902

*For Larger Motor Sizes & High Specification. See POPE FLEXI-FRAME® Series

BRAKE MOTOR DATA

2 Pole Brake Motor Data

Frame type	Power	Speed	Motor Torque (Full Load)	Brake Torque (Full Load)	Brake Torque / FL Motor Torque (%)		Brake Weight	Excited Power	Brake Time	Connected Time	Brake Catalogue Number
	kW	RPM	Nm	Nm	Min (%)	Max (%)	kg	Watts	ms	ms	
063	0.18	2720	0.63	4	253.9	761.9	1.1	25	50	60	PB-04
	0.25	2720	0.88	4	181.8	545.5					
071	0.37	2740	1.3	5	153.8	461.5	1.8	35	55	63	PB-05
	0.55	2740	1.9	5	105.3	315.8					
080	0.75	2840	2.53	8	118.6	355.7	2.8	50	75	87	PB-08
	1.1	2840	3.72	8	80.6	241.9					
090	1.5	2840	5	15	120.0	360.0	4.0	60	95	110	PB-15
	2.2	2840	7.4	15	81.1	243.2					
100	3.0	2860	9.95	30	120.6	361.8	4.9	80	120	140	PB-30
112	4.0	2900	13.2	40	121.2	363.6	7.0	110	130	152	PB-40
132	5.5	2900	18	80	177.8	533.3	10.0	130	140	165	PB-80
	7.5	2900	24.7	80	129.6	388.7					
	11.0	2900	35.8	80	89.4	268.2					
160	11.0	2930	35.80	150	167.6	502.8	16.0	150	180	214	PB-150
	15	2930	48.9	150	122.7	368.1					
	18.5	2930	60.3	150	99.5	298.5					
180	22	2940	71.40	200	112.0	336.1	31.0	150	210	252	PB-200
	30	2940	97.1	200	82.4	247.2					
200	30	2950	97.1	300	123.6	370.8	48.0	200	250	303	PB-300
	37	2950	119.8	300	100.2	300.5					
225	45	2960	144.7	450	124.4	373.2	60.0	200	270	359	PB-450
250	55	2965	175.80	600	136.5	409.6	80.0	250	285	285	PB-600
280	75	2970	241.1	850	141.1	423.1	95.0	370	320	435	PB-850
	90	2970	289.3	850	117.5	352.6					
315	110	2975	353.0	2000	226.6	679.9	155.0	400	375	495	PB-2000
	132	2975	423.6	2000	188.9	566.6					
	160	2975	513.6	2000	155.8	467.3					
	200	2975	641.0	2000	124.8	374.4					

4 Pole Brake Motor Data

Frame type	Power	Speed	Motor Torque (Full Load)	Brake Torque (Full Load)	Brake Torque / FL Motor Torque (%)		Brake Weight	Excited Power	Brake Time	Connected Time	Brake Catalogue Number
	kW	RPM	Nm	Nm	Min (%)	Max (%)	kg	Watts	ms	ms	
063	0.12	1310	0.87	4	183.9	551.7	1.1	25	50	60	PB-04
	0.18	1310	1.31	4	122.1	366.4					
071	0.25	1330	1.8	5	111.1	333.3	1.8	35	55	63	PB-05
	0.37	1330	2.66	5	75.2	225.6					
080	0.55	1390	3.78	8	79.4	238.1	2.8	50	75	87	PB-08
	0.75	1390	5.15	8	58.3	174.8					
090	1.1	1390	7.6	15	78.9	236.8	4	60	95	110	PB-15
	1.5	1390	10.3	15	58.3	174.8					
100	2.2	1410	14.8	30	81.1	243.2	4.9	80	120	140	PB-30
	3.0	1410	20.2	30	59.4	178.2					
112	4.0	1435	26.5	40	60.4	181.1	7.0	110	130	152	PB-40
	5.5	1440	36.5	80	87.7	263.0					
132	7.5	1440	49.74	80	64.3	193.0	10.0	130	140	165	PB-80
	11	1460	71.9	80	44.5	133.5					
	160	1460	71.9	150	83.4	250.3					
160	15	1460	98.1	150	61.2	183.5	16.0	150	180	214	PB-150
	18.5	1470	120.1	200	66.6	199.8					
	22	1470	142.9	200	56.0	167.9					
180	30	1470	194.9	200	41.0	123.1	31.0	150	210	252	PB-200
	30	1470	194.9	200	61.6	184.7					
	30	1475	194.9	300	61.6	184.7					
200	30	1475	239.6	450	75.1	225.4	48.0	200	250	303	PB-300
	37	1475	291.6	450	61.7	185.2					
225	45	1480	291.6	450	61.7	185.2	60.0	200	270	359	PB-450
	55	1480	354.8	600	67.6	202.9					
250	75	1480	483.3	600	49.7	149.0	80.0	250	285	285	PB-600
	75	1480	483.3	850	70.3	211.0					
280	90	1480	580.7	850	58.6	175.7	95.0	370	320	435	PB-850
	110	1480	709.3	850	47.9	143.8					
	110	1480	709.3	850	112.8	338.4					
	110	1480	709.3	2000	112.8	338.4					
315	132	1480	851	2000	94.0	282.0	155.0	400	375	495	PB-2000
	160	1480	1031	2000	77.6	232.8					
	200	1480	1285	2000	62.3	186.8					
	250	1480	1605	2000	49.8	149.5					
	250	1480	1605	2000	49.8	149.5					
	280	1480	1800	2000	44.4	133.3					

6 Pole Brake Motor Data

Frame type	Power	Speed	Motor Torque (Full Load)	Brake Torque (Full Load)	Brake Torque / FL Motor Torque (%)		Brake Weight	Excited Power	Brake Time	Connected Time	Brake Catalogue Number
	kW	RPM	Nm	Nm	Min (%)	Max (%)	kg	Watts	ms	ms	
63	0.12	840	1.2	4	133.3	400.0	1.1	25	50	60	PB-04
71	0.18	850	1.9	5	105.3	315.8	1.8	35	55	63	PB-05
	0.25	850	2.4	5	83.3	250.0					
80	0.37	885	3.99	8	75.2	225.6	2.8	50	75	87	PB-08
	0.55	885	5.99	8	50.1	150.3					
90	0.75	910	7.9	15	75.9	227.8	4.0	60	95	110	PB-15
	1.1	910	11.55	15	51.9	155.8					
100	1.5	920	15.6	30	76.9	230.8	4.9	80	120	140	PB-30
112	2.2	935	22.35	40	71.6	214.8	7.0	110	130	152	PB-40
132	3	960	29.8	80	107.4	322.1	10	130	140	165	PB-80
	4	960	39.8	80	80.4	241.2					
	5.5	960	54.7	80	58.5	175.5					
160	7.5	970	73.8	150	81.3	243.9	16	150	180	214	PB-150
	11	970	108.3	150	55.4	166.2					
180	15	970	148	200	54.1	162.2	31	150	210	252	PB-200
200	18.5	980	182.1	300	65.9	197.7	48	200	250	303	PB-300
	22	980	216.6	300	55.4	166.2					
225	30	980	292.3	450	61.6	184.7	60	200	270	359	PB-450
250	37	980	360.5	600	66.6	199.7	80	250	285	285	PB-600
280	45	980	438.5	850	77.5	485.7	95	370	320	435	PB-850
	55	980	535.9	850	63.4	190.3				359	
315	75	985	723.5	2000	110.6	331.7	155	400	375	495	PB-2000
	90	985	873.5	2000	91.6	274.8					
	110	985	1065	2000	75.1	225.4					
355	132	985	1272	2000	62.9	188.7	155	400	375	495	PB-2000
	150	985	1440	2000	55.6	166.7					
	185	985	1775	2000	45.1	135.2					

8 Pole Brake Motor Data

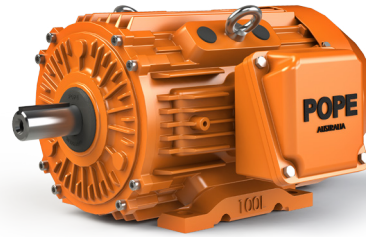
Frame type	Power	Speed	Motor Torque (Full Load)	Brake Torque (Full Load)	Brake Torque / FL Motor Torque (%)		Brake Weight	Excited Power	Brake Time	Connected Time	Brake Catalogue Number
	kW	RPM	Nm	Nm	Min (%)	Max (%)	kg	Watts	ms	ms	
63	0.06	640	0.9	4	177.8	533.3	1.1	25	50	60	PB-04
71	0.09	660	1.3	5	153.8	461.5	1.8	35	55	63	PB-05
	0.12	660	1.6	5	125.0	375.0					
80	0.18	645	2.5	8	120.0	360.0	2.8	50	75	87	PB-08
	0.25	645	3.4	8	88.2	264.7					
90	0.37	670	5.27	15	113.9	341.6	4.0	60	95	110	PB-15
	0.55	670	7.84	15	76.5	229.6					
100	0.75	680	10.54	30	113.9	341.6	4.9	80	120	140	PB-30
	1.1	680	15.4	30	77.9	233.8					
112	1.5	690	20.78	40	77.0	231.0	7.0	110	130	152	PB-40
132	2.2	690	29.8	80	107.4	322.1	10.0	130	140	165	PB-80
	3	705	40.64	80	78.7	236.2					
160	4	720	53.1	150	113.0	339.0	16.0	150	180	214	PB-150
	5.5	720	72.9	150	82.3	246.9					
	7.5	720	99.5	150	60.3	180.9					
180	11	730	143.9	200	55.6	166.8	31.0	150	210	252	PB-200
200	15	730	196.2	300	61.2	183.5	48.0	200	250	303	PB-300
225	18.5	730	242	450	74.4	223.1	60.0	200	270	359	PB-450
	22	730	287.8	450	62.5	187.6					
250	30	735	392.4	600	61.2	342.9	80.0	250	285	285	PB-600
280	37	735	477.5	850	71.2	213.6	95.0	370	320	435	PB-850
	45	735	580.7	850	58.6	175.7					
315	55	735	712	2000	112.4	337.1	155.0	400	375	595	PB-2000
	75	735	969	2000	82.6	247.7					
	90	735	1163	2000	68.8	206.4					
	110	735	1422	2000	56.3	168.8					

Other POPE Products

Extreme & MinePak Electric Motor

Flexi-Frame Sizes 63 - 600

- IP66 or IP69K High Pressure Wash Down
- Class H Insulation
- Patented Extreme Shaft Seal
- Tru-Flush Greasing System
- RTDs & Thermistors
- Anti-Condensation Heaters
- 2 Pack Paint
- VFD / Inverter Duty
- See Pope Flexi-Frame Catalogue



FoodPak Electric Motor

Flexi-Frame Sizes 63 - 600

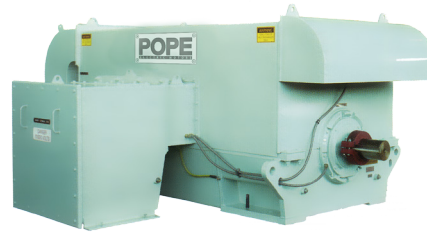
The POPE FoodPak Food Grade Electric Motor combines high performance and high ingress protection with features specifically designed to meet the unique needs of your food and beverage applications.



High Voltage Electric Motor

Frame Sizes 315 - 700

POPE Electric Motors offer a full range of output speeds and torque capabilities. We can produce motors to handle voltages of up to 13.8kV in 3 phase power, as well as special voltages and frequencies.



FloodPak Electric Motor - IP67

Flexi-Frame Sizes 63 - 600

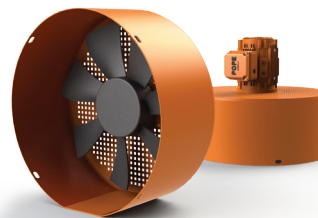
Designed to survive temporary flooding and deluge. The POPE FloodPak motor is ideal for critical supply installations that may be subject to heavy seas, cyclonic conditions, low lying flood zones and locations which may be affected by broken pipes.



Forced Cooling Kit & VFD'S

All Size Motors

Variable Frequency Drives allow POPE Motors to operate at varying speeds resulting in reduced energy costs, improved processes, productivity levels and minimise equipment wear. Motors above 90kW are recommended to have additional bearing protection when powered by a VFD.



Quality
ISO 9001

