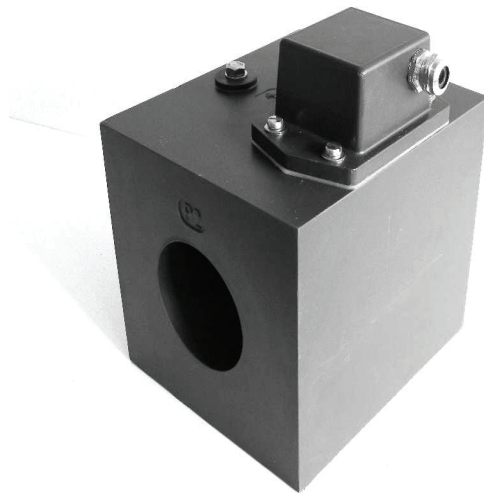


CURRENT TRANSFORMER TA11PE80-2 FOR MASS RELAY OF RAILWAY TRACKSIDE SUBSTATION



TA11PE80-2

- **Outdoor use**
- **Dry isolation in cast epoxy resin**
- **With ground terminal**
- **Vertical or horizontal assembly**

The current transformer TA11PE80-2 is a window type, with inner diameter of 80mm.

This device is intended to feed mass relays of railway trackside substation.

This transformer is cast in epoxy resin. Equipped with an IP54 terminal cover with cable gland M8 grounding terminal available. Fixing by 4xM8 inserts on the CT's base, 120mm spread apart. Possible to fix in any position, does not require any maintenance.

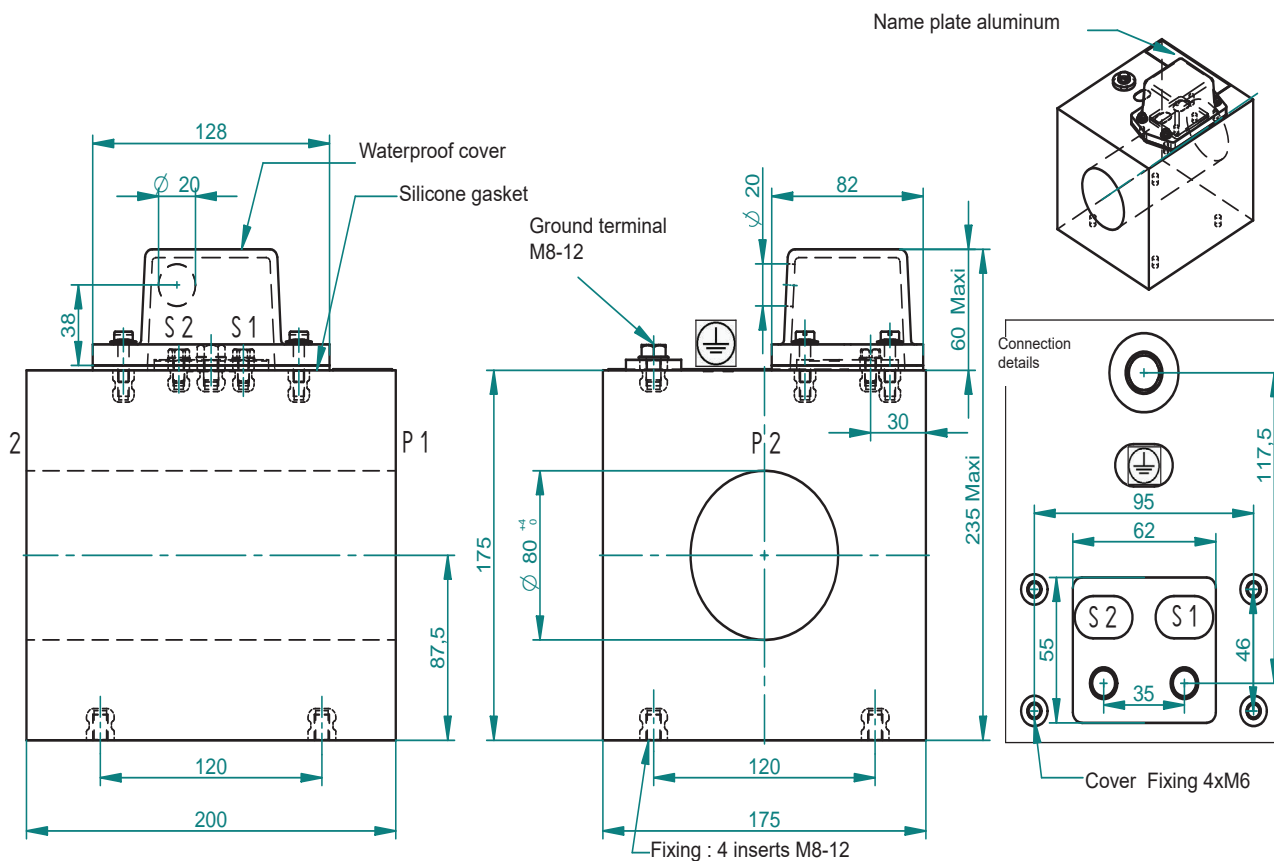
Technical data

Highest voltage for equipment	0.72 kV
Power frequency withstand voltage	3 kV
Primary current I _{pn}	250 A
Secondary current I _{sn}	5 A
Frequency	50 Hz
Rated output	30 VA
Accuracy class	10 P
Security factor	5
Continuous thermal current	1.2 I _{pn}
Short time thermal current I _{th}	12.5 kA/1 s
Dynamic current I _{dyn}	2.5 I _{th}
Insulation class	E
Ambient temperature	-25°C to + 40°C
Protection index	IP54
Standards	IEC - IEEE - CSA - AS - BS

Accessories / Options

Weatherproof terminal cover	Delivered as standard
-----------------------------	-----------------------

CURRENT TRANSFORMER TA11PE80-2 FOR MASS RELAY OF RAILWAY TRACKSIDE SUBSTATION



Installation :

- No special precautions are required for handling the transformer, beyond not grabbing by the cover
- Transformer is best stored indoor, inside its original packing. Remove from packing in case of outdoor storage.
- CT can be fixed without fixing plate using the 4 off M8 inserts spread 120mm apart. Grease up each insert before tightening.
- When using fixing plate, use 4 off 12mm diameter holes spread 205mm apart.
- When installing the IP54 cover, tighten the 2 fixing screws gradually and alternately to evenly crush the gasket and ensure a good sealing.
- Before energizing, check that the 2 secondary terminals are connected to the operating circuit. Never open or leave the secondary open while that the transformer is energized. High voltages may appear at the terminals of the secondary circuit. They can be dangerous for people and lead to the destruction of the transformer.
- This transformer does not require any specific maintenance.
- Tightening torque of secondary terminals M6: 3 Nm
- Tightening torque of M8 fixing inserts: 7 Nm
- Tightening torque of grounding terminal M8: 7 Nm
- Weight: +/- 14 kg