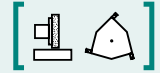


SAV 244.06

PERMANENT MAGNETIC CIRCULAR CHUCKS

With radial pole pitch



APPLICATION

For round and ring-shaped workpieces.

DESIGN

High magnetic force. Concentric rings allow easy alignment of workpieces. Magnetic field continuously adjustable up to \varnothing 300 mm. Through hole possible up to max. diameter **D**. Standard version without through hole at the centre. Diameter **C** is magnetically not active. Available with flange on request (see SAV 248.90 to 248.95).

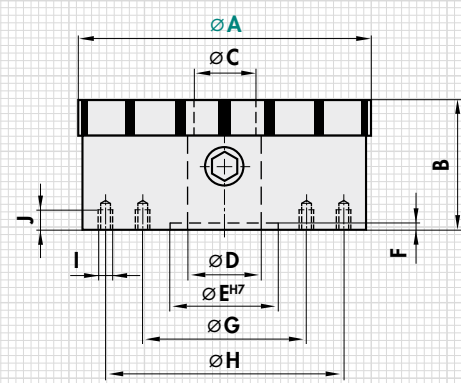
Larger diameters with T-grooves on request. Pole gap with brass pigment.

TECHNICAL DATA

- Rated holding force: 100 N/cm²
- Wear thickness of the top surface:
5 mm (for A = 100 to 300 mm)
10 mm (for A = 350 to 400 mm)
- Geometrically balanced: \ominus 6.3



mm										Qty.	kg	N/cm ²
A	B ^{+0.5 -2}	C	D ₂	E	F	G	H	I	J	Poles	Weight	Nom. hold.f.
100	48	14	-	51	6	76	-	M6	8	6	2.6	80
130	57	16	20	50	5	100	-	M6	10	10	5.7	90
150	57	20	24	50	5	80	120	M6	8	10	6.5	90
200	57	28	30	60	5	110	180	M6	8	12	13.0	115
250	70	30	50	80	5	140	220	M6	8	16	20.0	135
300	73	40	58	150	6	180	260	M8	10	16	30.0	150
350	73	40	58	170	6	220	300	M8	12	20	49.0	150
400	75	40	58	200	8	260	340	M8	12	20	75.0	150
500	92	60	58	200	8	360	440	M8	12	26	144.0	150



4 fastening holes per pitch circle

ORDERING EXAMPLE

Designation	SAV no. - A
Permanent magnetic circular chuck	SAV 244.06 - 400