

### Features

- Frequency Range 2 to 2000 MHz
- Low Cost and RoHS Compliant
- Small SMT package
- Available in Tape-and-Reel
- 50  $\Omega$  Characteristic Impedance

### Applications

- Broadband
- Wireless



### Product Description

The MRFSP7525 2-way Splitter is designed for applications that require small, low cost, and highly reliable surface mount components. Applications may be found in broadband, wireless and other communications systems. These units are built Lead-Free and RoHS compliant. S-Parameters are available on request.

### Specifications

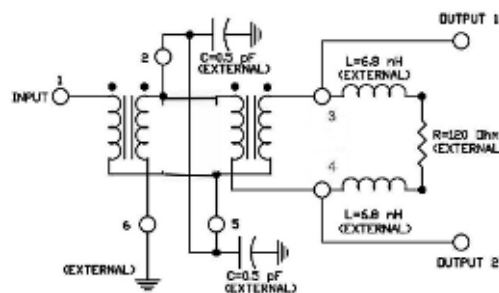
Parameter	Min	Typ*	Max	Min	Typ*	Max	Min	Typ*	Max
Frequency Range (MHz)	2		20	20		200	200		2000
Insertion Loss (dB)		0.15	0.25		0.30	0.35		0.6	1.0
Isolation (dB)	25	30		35	38		15	22	
Input Return Loss (dB)	20	23		25	28		16	20	
Output Return Loss (dB)	18	23		25	28		9	15	
Amplitude Balance (dB)		0.10	0.15		0.10	0.15		0.20	0.25
Phase Balance (Degrees)		0.5	1.0		0.6	1.0		3.0	8

\* Typical data represents mid-band performance @ 25 C

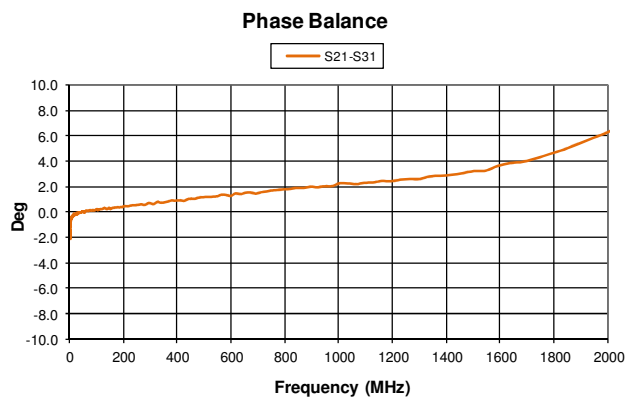
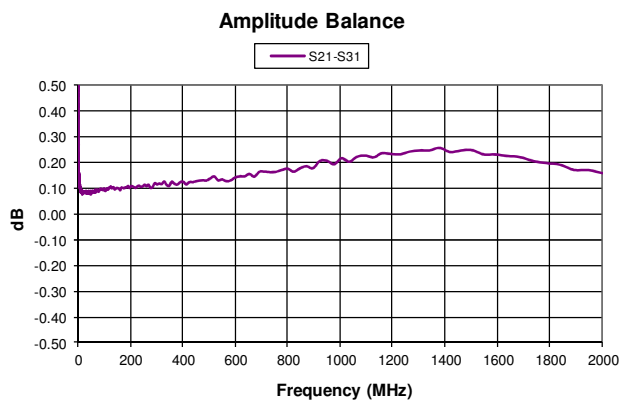
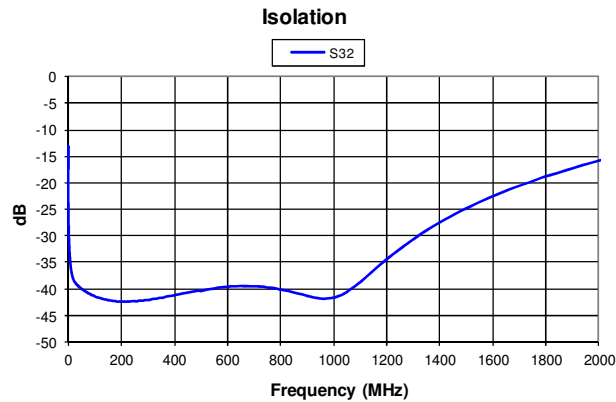
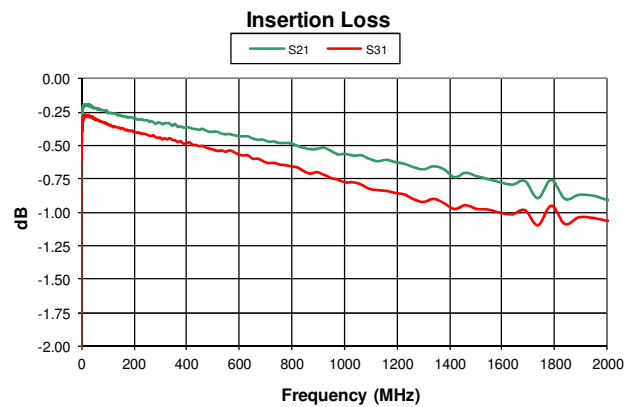
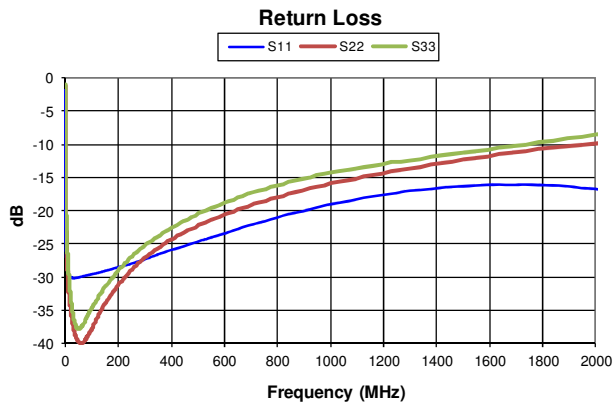
### Absolute Maximum Ratings

Parameter	Maximum
RF Power	2 Watts
Operating Temperature	-45 to +100 °C
Storage Temperature	-55 to +125 °C

### Schematic



### Typical Data

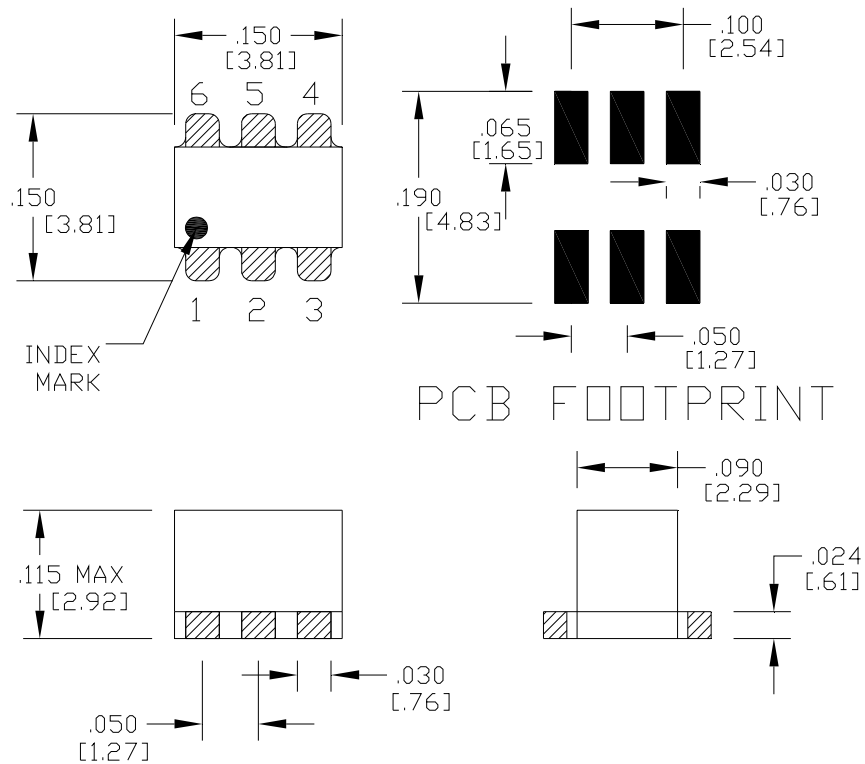


### MiniRF Incorporated

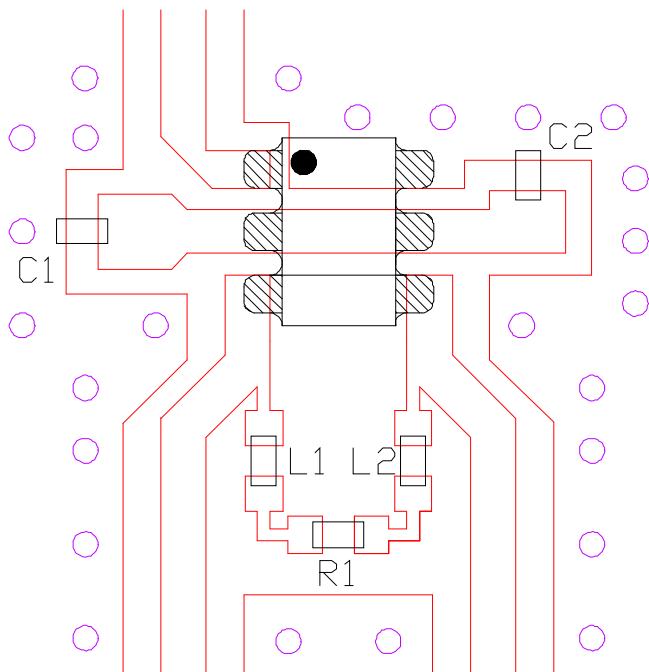
### Pin Out

Pin	Function
1	INPUT
2	C2
3	OUTPUT 1, L1, R1
4	OUTPUT 2, L2, R1
5	C1
6	GROUND

### Package S19



### MiniRF Incorporated

**Application Footprint**

$C1 \ \& \ C2 = .5 \ \mu\text{F}$

$L1 \ \& \ L2 = 6.8 \ \text{nH}$

$R1 = 120 \ \Omega$