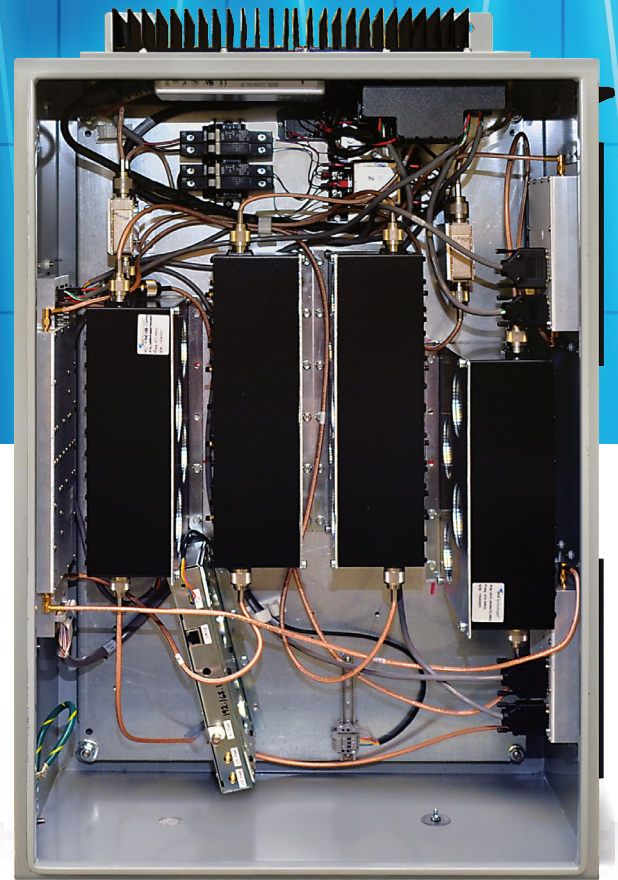


SIGNAL BOOSTER

Digital UHF

SBIII 614 SERIES



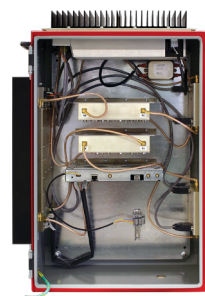
Master Your RF Environment

The 614 Series Digital Signal Booster provides Public Safety grade signal reliability and coverage in disadvantaged RF locations minimizing noise and interference. This model operates in the UHF frequency band with 14 programmable digital filters for both uplink and downlink. Filter center frequency and characteristics are fully programmable to meet the demands of various systems and signals. Digital filtering provides amplification of several individual channels of narrow bands frequencies-amplifying only the desired spectrum – while preventing interference to other signals. Components are protected by a NEMA 4 style enclosure to meet the demands of the NFPA requirements.

PRODUCT FEATURES

- Built in spectrum display to easily view the current RF spectrum compared to the desired signal.
- Precision oscillation detection and user programmable system handling based on conditions.
- Intuitive web browser user interface allows for local and network access.
- Highly secure SNMP (v. 3.0) to trap and send messages to an SNMP Manager.
- Digital filtering bandwidth is user programmable from 6.25 kHz to 1.5 MHz.
- The built-in pilot signal offers system coverage assessment with a 1 kHz FM modulated carrier that allows simple SINAD qualification testing.
- NFPA/IFC options include all battery backup configuration options to comply with standards.
- Able to be used as a head-end booster for a system that is donored "off the air" in an RF congested area.
- Can be connected to any number of SBII+ broadband boosters.
- Custom models available.

NFPA/IFC OPTIONS



■ **NFPA Digital SB**
Painted a Public Safety red



■ **6160-110-24-NR**
■ **6160-220-24-NR**
110 or 220 Amp-hour, minimum 12 or 24 hour battery backup units

SBIII 614 SERIES

Specifications

SYSTEM

Filters	14 uplink filters per band 14 downlink filters per band
Frequency Bands*	450 to 470 MHz 470 to 488 MHz
Filter Bandwidth	Programmable standard filters include 12.5 kHz, 12.5 kHz low delay, 25 kHz, 100 kHz. Other custom filters can be configured by the user or factory to meet specific system requirements.
Maximum Gain	95 dB
Output Power	
High Power	32 dBm
Low Power	22 dBm
Maximum Input Level	-20 dBm
RF Input/Output Impedance	50 Ohms nominal
Power	90-250 VAC, 50/60 Hz and 24 VDC
Control & Monitoring	Intuitive web browser interface over an Ethernet connection, local individual module status LED's, SNMP Traps.
Alarms	Form-C Contacts (NO or NC)

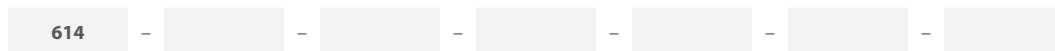
CONNECTORS

External RF Connectors	N (f)
-------------------------------	-------

PRODUCT SELECTION GUIDE

Example: 614-70-A-HH-G1A = Digital Signal Booster, 450-470 MHz, 14 Filters, High Power UL / High Power DL, Gray Steel Enclosure

Note: Not all combinations are valid. If assistance is needed consult the factory to define the model that is right for you.



Product Type	Frequency Band	No. of Filters	Channel Power	NEMA 4 Enclosure
614	70 = 450 to 470 MHz 70A = 470 to 488 MHz	A = 14	HH = High Power Uplink and Downlink	G1A = Gray Painted Steel Enclosure G2A = Stainless Steel Enclosure
			HL = High Power Uplink and Low Power Downlink	
			LH = Low Power Uplink and High Power Downlink	
			LL = Low Power Uplink and Downlink	

Please Contact Factory for non-standard configurations with custom frequency, windows and bandwidth. Frequencies MUST be provided with order.

* Supports 28 filters within a single 3 MHz Bandwidth for either 450 to 460 MHz or 460 to 470 MHz

* Supports 28 filters within a single 1.5 MHz Bandwidth for 470 to 488 MHz

**Class A or B Type booster equipment (depending on how it is configured) is authorized under FCC Rules Part 90, Canada Certification Part RSS-131

PHYSICAL

Size	30 in x 20 in x 10 in
Weight	95 lb
Enclosure	Modified NEMA 4 w/o Fans

ENVIRONMENTAL

Operating Temperature	-30 °C to 60 °C
------------------------------	-----------------

CERTIFICATIONS**

FCC	EZZ61470 (450 to 470 MHz) EZZ61470A (470 to 488 MHz)
Industry Canada	1940A-61470 (450 to 470 MHz) 1940A-61470A (470 to 488 MHz)

NFPA OPTIONS

6160-110-24-NR	110 Amp-hour, minimum 12 hour battery backup unit
6160-220-24-NR	220 Amp-hour, minimum 24 hour battery backup unit

birdrf.com/products

The RF Experts | USA Sales : 30303 Aurora Rd, Solon, OH 44139 | www.birdrf.com

Phone: +1 440.248.1200 / 866.695.4569 [Toll Free] | Fax: +1 440.248.5426 / 866.546.4306 [Toll Free]

Bird is not responsible for omissions or errors. Specifications subject to change without notice.

©2022 Bird | Signal-Booster-SBIII-Digital-614-Series-03072022

