

# AVCO

*Alloy Valves and Control*

## GEAR OVERRIDE ALXL SERIES



The ALXL series declutch override gear box is specially designed to be used on butterfly valve, ball valve and plug valve assemblies with pneumatic actuators. This device allows for manual operation during installation, system testing and in the event of a supply air failure.

The ALXL Series mounts directly to many of the most popular rack and pinion style actuators on the market and does not require a bracket between the pneumatic actuator and declutch override. The units come complete with a coupler which connects the pneumatic actuator to the valve.

### **MAIN FEATURES:**

Compact, lightweight and efficient design.

Manufactured with cast iron housing.

ISO 5211 direct mount patterns.

Two keyways spaced 90 degrees apart to enable simple orientation between valve and actuator.

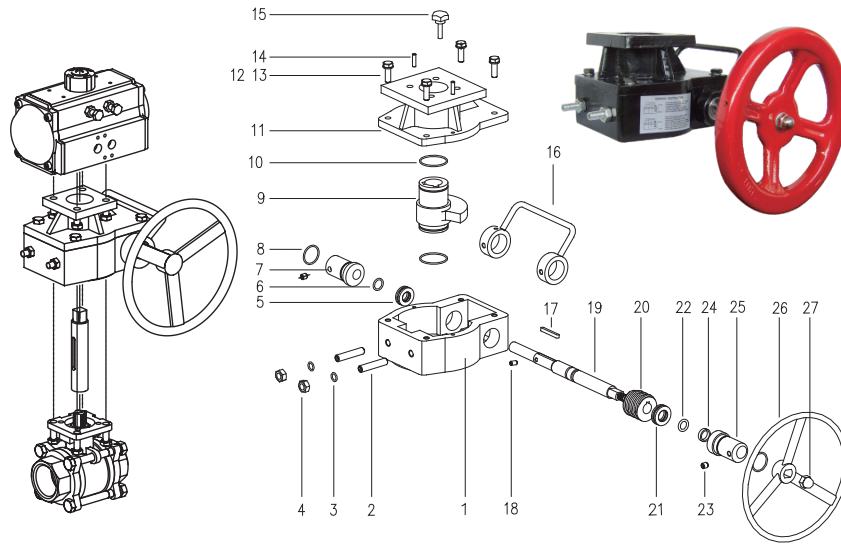
Simple switching between manual drive or the automatic drive with the place-pin.

Filled with special lubricant before leaving the factory.

Weatherproof to IP65.

Output torque ranges from 300 to 22100Nm.

### PARTS & SPECIFICATIONS



#### Material

NO.	Description	Qty.	Material	option
1	Body(for size of 26,38,54)	1	Die casting Aluminum with epoxy coated	PTFE coated (for size of 26,38,54,78,80)
	Body (for size of 78,80,98,100,118)		Casting iron with epoxy coated	
2	Adjust screw	2	SS304	
3	O-ring(Adjust screw)	2	NBR	
4	Nut(Adjust screw)	2	SS304	
5	Needle bearing	1	Carbon steel	
6	O-ring	1	NBR	
7	Eccentric bushing (1)	1	Carbon steel with electric polyester coated	SS304
8	O-ring(eccentric bushing)	2	NBR	
9	Worm gear	1	Casting iron(QT500-7GB1348-88)	
10	O-ring (Worm gear)	2	NBR	
11	Bracket cap (for size of 26,38,54)	1	Die casting Aluminum with epoxy coated	PTFE coated (for size of 26,38,54,78,80)
	Bracket cap (for size of 78,80,98,100,118)		Casting iron with epoxy coated	
12	Screw	4	SS304	
13	Thrust washer	4	SS304	

NO.	Description	Qty.	Material	option
14	Pin	2	Carbon steel	
15	Lock handle screw	1	SS304	
16	Clutch lever	1	Carbon steel with electric polyester coated	PTFE coated
17	Key	1	Carbon steel	
18	Screw	1	Carbon steel	
19	Worm shaft	1	Carbon steel with electric polyester coated	SS304
20	Worm	1	Carbon steel	
21	Needle bearing	1	Carbon steel	
22	O-ring	1	NBR	
23	Screw	2	Carbon steel	SS304
24	Bearing	1	Polyoxymethylene	
25	Eccentric bushing (2)	1	Carbon steel with electric polyester coated	SS304
26	Handle wheel	1	Carbon steel with epoxy coated	
27	Cap nut	1	Carbon steel	SS304

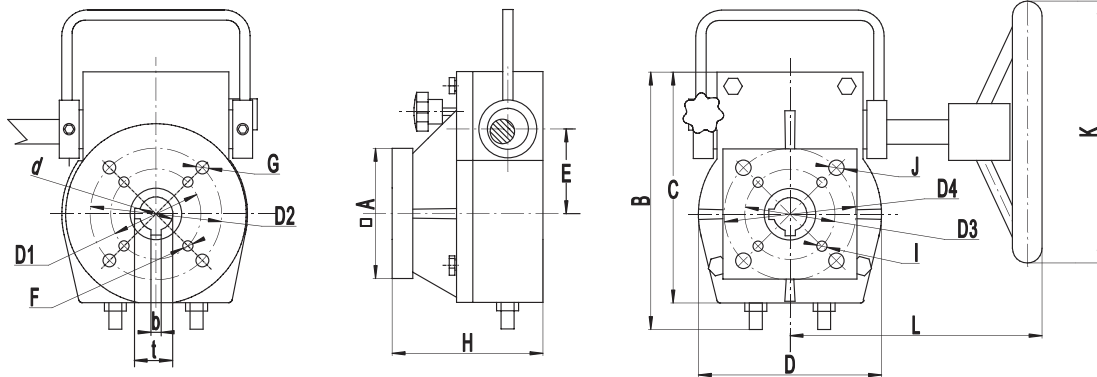
\*The body and bracket cap is sealed by Oil resistant silicone sealant.

### Specification and Output Torque

No.	Model	Gear Ratio	Input Torque(Nm)	Output Torque(Nm)	Weight(Kg)
1	ALXL26	26:1	70	300	4
2	ALXL38	38:1	60	550	5.5
3	ALXL54	54:1	120	1200	9
4	ALXL80	80:1	140	2000	31
5	ALXL78A	78:1	200	3600	44
6	ALXL98	98:1	300	9000	135
7	ALXL100	100:1	400	13000	190
8	ALXL118	118:1	900	22100	540

Alloy Valves and Control

### DIMENSIONS



Note: This diagram shows off position

Model	d	b	t	ΦD1	F	ΦD2	G	A	H	E	ΦD3	I	ΦD4	J	K	L	B	C	D
ALXL26:1	22	6	24.8	50	M6			70	99	50.5	50	Φ7			Φ140	155	160	145	110
						70	M8												
				50	M6	70	M8												
ALXL38:1	26	8	29.3	70	M8			100	117	65	70	Φ 9			Φ 200	195	195	175	140
								38											
ALXL54:1	38	10	41.3	125	M12			130	118	85	125	Φ 14			Φ 280	205	235	215	180
ALXL80:1	48	14	51.8	140	M16			156	148	124	140	Φ 18			Φ 400	245	320	298	250
ALXL78:1	60	18	64.4	165	M20			220	150	142	165	Φ 22			Φ 500	265	360	340	285
ALXL98:1	80	22	85.6	165	M20			230	195	229	165	Φ 22			Φ 800	410	550	530	460
ALXL100:1	100	28	106.6	254	M16			300	195	258	254	Φ 18			Φ 800	430	605	585	520
ALXL118:1	120	32	127.6	356	M30			445	250	391	356	Φ 32			Φ 1000	550	900	870	800