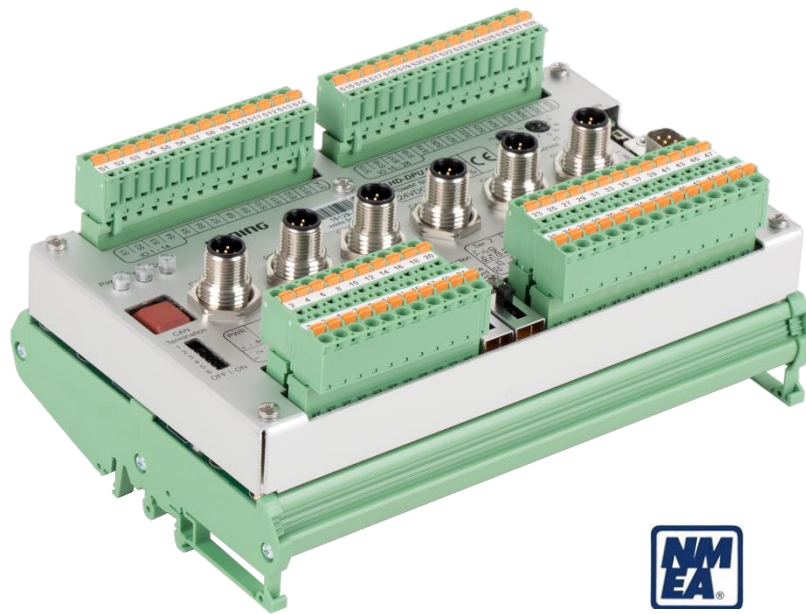


## **AHD-DPU 9**

### **Data Processing Station**



NMEA 2000® is the registered trademark of the National Marine Electronics Association. Böning Automationstechnologie GmbH & Co. KG is a manufacturer member of the National Marine Electronics Association.

- ***Capture of external data sources***
- ***Distribution of processed data to external display and control units***
- ***Function as configurable watch standby system***
- ***Internal data memory for local backup of events, retrievable via visualization***

AHD-DPU 9 is a universal data station for all signals and data accruing on board of a ship. For example, AHD-DPU 9 can capture and process data from external sources, measurement and performance data from engines, generators and ship alarm systems and make them available within a ship wide Böning system. Status messages, such as watch standby and alarms can also be processed. The internal memory can store up to 16,000 events.

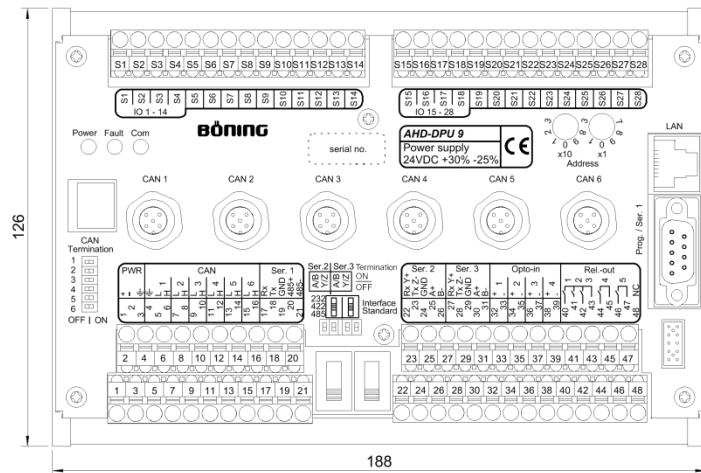
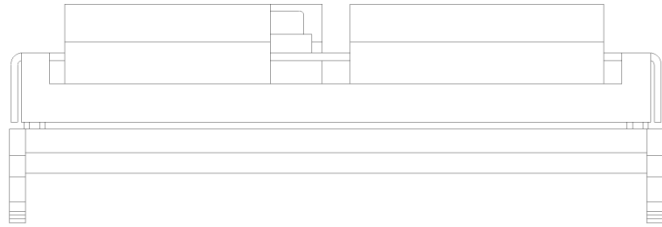
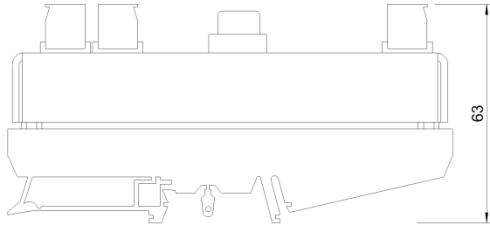
At the same time, AHD-DPU 9 can perform mathematical and logical operations (PLC functionality).

AHD-DPU 9 provides 28 I/O ports configurable e.g. for the connection of AHD-PS 15, AHD-PS 30, AHD-PS 47, and AHD-R101, as well as direct input channels.

AHD-DPU 9 can visualize these data on up to 6 monitors, connected via Ethernet. Numerous interfaces (e.g. CAN, serial interface and binary inputs/outputs) ensure a problem free integration into the vessel's infrastructure. AHD-DPU 9 can fulfill the function of the Böning devices AHD-UCC, AHD-UIC and AHD 882.

AHD-DPU 9 is certified by NMEA 2000.

## Dimensions



## Technical Data

Power Supply	24 V DC (+30% -25%)
Current Consumption	Ca. 170 mA (24 V DC)
Environmental Temp.	-30°C... + 70°C
Storage Temperature	-50°C... +85°C
Weight	Appr. 0.7 kg
Protection Class	IP 20
Overall Dimensions (mm)	188 x 126 x 63
Approvals	DNV LR CRS RS NMEA 2000
Required distance to compass	Standard magnetic compass: 0.55 m Steering magnetic compass: 0.40 m

Interfaces	28 x binary connection (optocoupler, serial, static) for the connection to AHD-PS XX, AHD-R101 and as direct potential bound inputs with the same supply voltage as AHD-DPU 9 6 x CAN (galvanically isolated, termination and address) 1 x LAN (RJ45, 10/100 MBit) 1 x serial (RS232/RS485, optically isolated) 2 x serial (RS232/RS485/RS422, switchable, termination switchable, optically isolated)
Inputs	4 x optocoupler (alarm acknowledgement, optional special functions)
Outputs	5 x relay output (galvanically isolated, 2 x contact 2-pin, 3 x contact 1-pin)
Item Number	15129V02