

1023302340

## ELSII-10PM

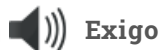
Network Projector Speaker, 10W, Bi-Directional, Ethernet



**IC-EDGE** IC-Edge



**ICX-AlphaCom**



### Audio

**Automatic Volume**

**HD Voice**

**Automatic Gain Control**

### Network

- Zenitel Audio Presence - crystal clear audio
- 10W Class D, built-in amplifier
- Dust and water tight – IP 65
- 97 dB SPL (1m)
- Ideal for Micro Zone PA and systems that require a limited number of speakers
- Each speaker is individually addressable and monitored
- ONVIF Compatible
- Ideal for speakers installed in remote locations, e.g. roads and railways
- Remote software upgrade and configuration
- Relay output for remote control, e.g. doors, signal lamps, gates
- Powered from the IP network cable using Power over Ethernet (PoE)
- Ideal for Building Security, Infrastructure and Industrial projects

## DESCRIPTION

This Zenitel IP Projector speaker features two 130mm full-range loudspeakers driven by a 10W Class D amplifier, powered over PoE. This means that the speaker is capable of delivering upto 97 dB, depending on the signal input. The Bi-directional speaker design allows for a balance between the directivity of a horn speaker, and the visual considerations of a cabinet speaker. This speaker is ideal for installation on walls or at ceiling level for audio along corridors, walkways, air-bridges and platforms.

With networked audio devices the system is able to monitor and address each speaker individually. By moving the amplifier from a central unit out to the speaker itself, the need for a central amplifier unit with conventional speaker loops is eliminated. This makes the system highly scalable, and adding another speaker is easy to do.

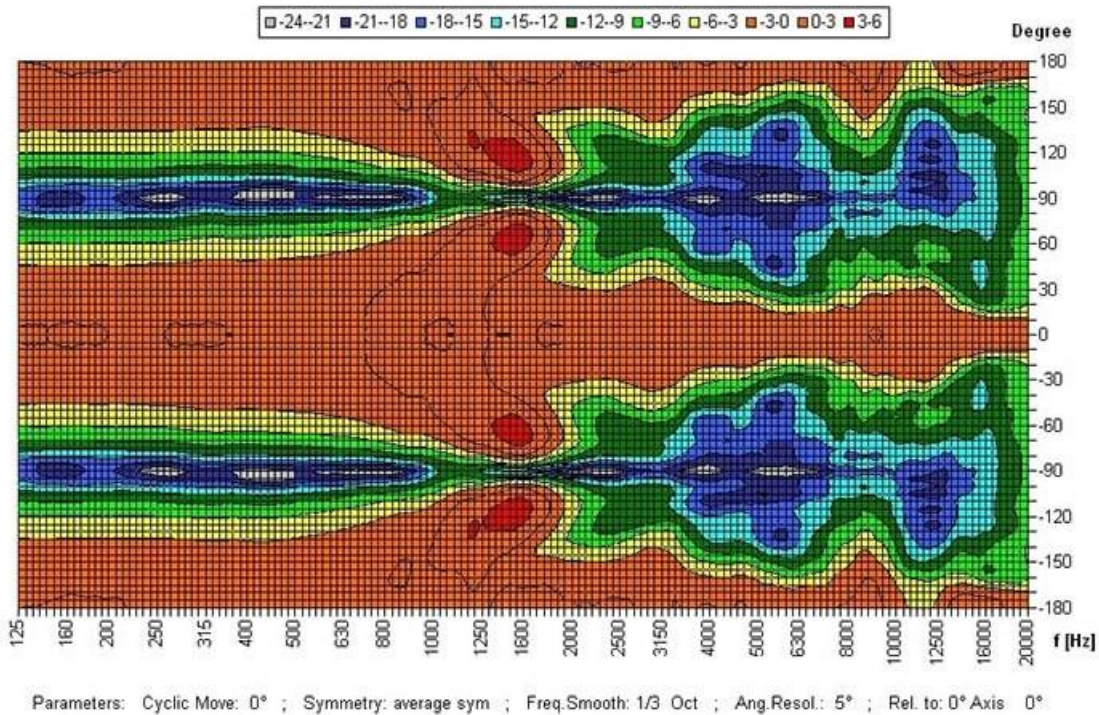
Whilst conventional speaker loops are not used, the speakers can still be divided into groups. These zones can now extend over networks or span the Internet. To provide maximum availability, the speaker comes with advanced supervision functions.

The built-in microphone enables intelligent features such as Self-checking, and Automatic Volume Control. It also enhances what is traditionally a broadcast-only medium adding Half Duplex speech, and Ambient Listen functions. Self-checking will detect whether there are any faults in the network or speaker electronics. The status of the speaker is reported to the central unit as well as to 3rd-party management systems using SNMP or Syslog. The speakers can also be discovered, receive messages, and use Talkback direct to a VMS over ONVIF.

The speaker has a built-in web interface for status information, control, and upgrade. It is easy to install and maintain. In addition, there are possibilities where broadcasts can be logged in detailed reports.

Polar Plot:

Copyright by Four-Audio GmbH & Co KG Licensed to AAC



# SPECIFICATIONS

## GENERAL

|   |  |
|---|--|
| Max. sound pressure level at 1 meter (10W/1m) | 100 dB   |
| Dispersion (-6dB) 1kHz / 4kHz                 | 2 x 130° / 2x 75°                              |
| Codecs  | G.711, G.722                                   |
| Frequency range, G.722 Codec                  | 200 Hz – 7000 Hz                               |
| Frequency range (speaker driver)              | 237-12.400 Hz                                  |
| Internal speaker amplifier                    | 10 W class D                                   |
| Mounting                                      | Built in, supporting wall and ceiling mounting |
| Weight  | 2,35 kg / 5 lbs                                |
| Material / Color                              | Aluminium / RAL 9010                           |

## ENVIRONMENT AND COMPLIANCES

|                             |                                 |
|-----------------------------|---------------------------------|
| Operating temperature range | -40° to 70° C / -40° to 158 ° F |
| Storage temperature range   | -40° to 70° C / -40° to 158 ° F |
| Relative humidity           | < 95% not condensing            |
| EMC                         | CE and FCC Part 15              |

## HARDWARE

|  |   |
|--|---|
| Ethernet connector                     | 1 x RJ 45   |
| All other connectors                   | Tool less, spring loaded, vibration proof terminals |
| General inputs and outputs             | 6 (configurable)                                    |
| Outputs                                | 12mA as LED drivers                                 |
| Power options                          | PoE   |
| PoE (power over Ethernet)              | IEEE 802.3af standard, Class 0 (0.44W to 12.95 W)   |
| Power consumption                      | Idle 1.8W, max 12W (depending on volume)            |
| Audio line out / induction loop signal | 600 Ohm   |

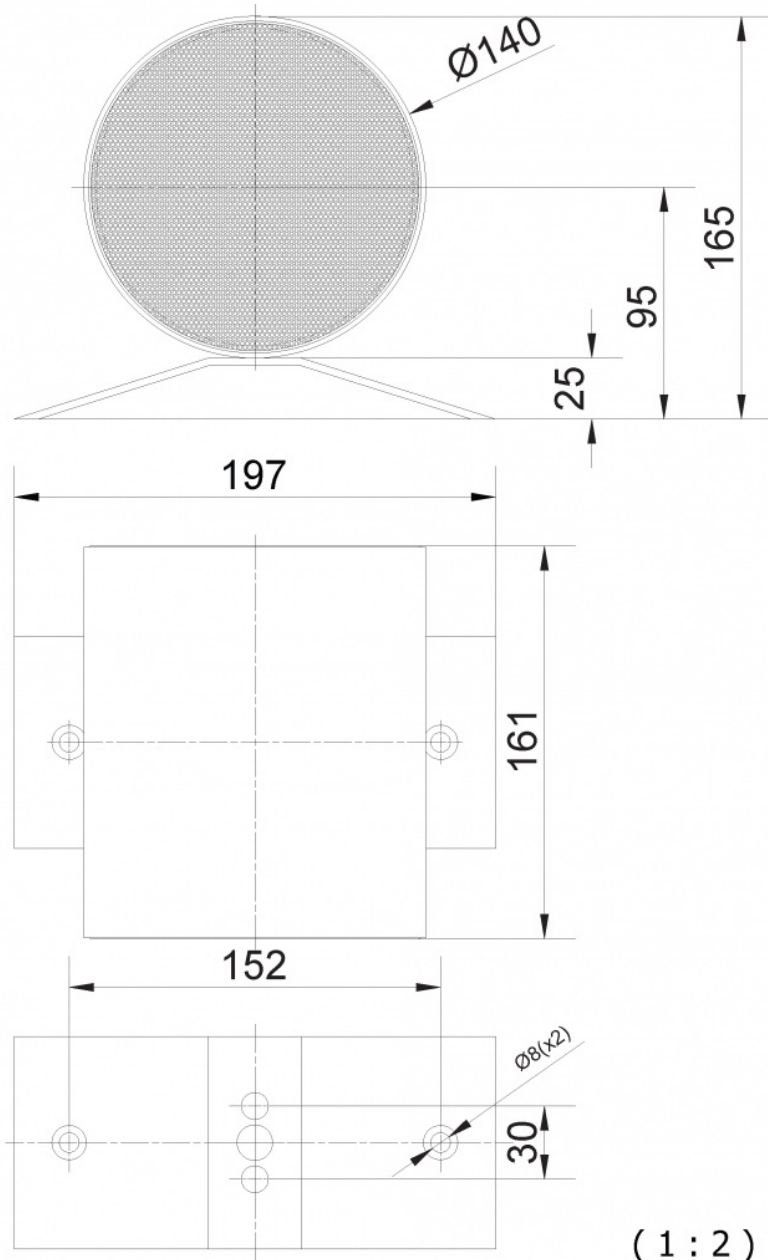
## NETWORKING AND PROTOCOLS

|                                |   |
|--------------------------------|---|
| Protocols                      | IPv4 (with DiffServ), SIP, TCP, UDP, Unicast, Multicast, HTTPS, TFTP, FTP, RTP, DHCP, SNMPv2c, ONVIF, CoIP®, NTP        |
| LAN protocols                  | Power over Ethernet (IEEE 802.3 a-f) Network Access Control (IEEE 802.1x)   |
| Management and operation       | HTTP/HTTPS (Web configuration) DHCP and static IP + IC-EDGE™. Remote automatic software upgrade. Centralized monitoring |
| Advanced supervision functions | E.g. network test, tone test, status reports, uptime  |
| SIP support                    | RFC 3261 (SIP base standard), RFC 3515 (SIP refer), RFC 2976 (SIP info), Multicast streaming                            |
| DTMF support                   | RFC 2833, 2976 (SIP info)   |

## OTHER SPECIFICATIONS

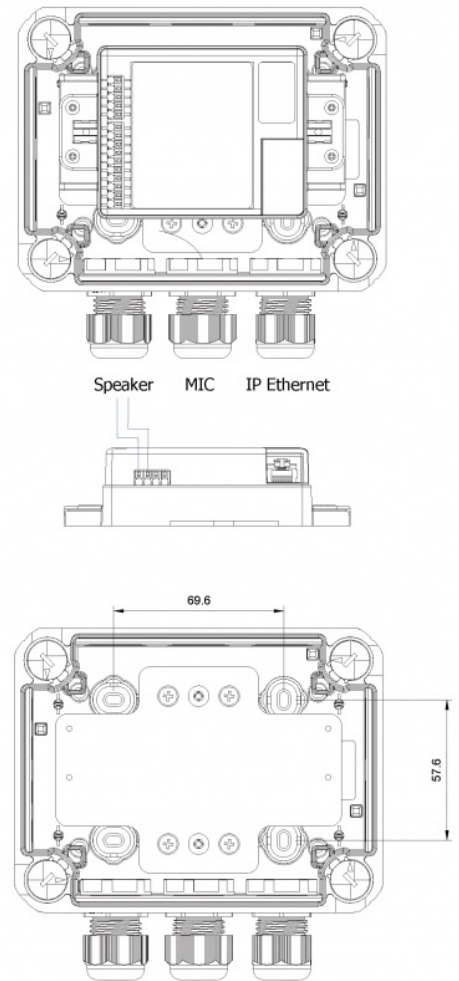
|                                 |                                     |
|---------------------------------|-------------------------------------|
| IP address information          | Speaks IP address after system boot |
| Country of manufacture          | Poland                              |
| Speaker Dimensions (WxHxD)      | 176 x 201 x 160 mm                  |
| Junction Box Dimensions (WxLxD) | 116 x 150 x 67 mm                   |
| Weight                          | 2,35 kg / 5 lbs                     |
| Encapsulation material          | Aluminium                           |
| DIN-rail clips                  | Wago 209 (included)                 |
| Boxed Shipping Weight           | 2.7 Kg                              |
| Boxed Shipping dimensions       | 180x250x170mm                       |

## TECHNICAL DIMENSIONS



( 1 : 2 )

Junction Box Dimensions:  
150 X 116 X 67 mm



## ACCESSORIES



### EMCG-1

Item number: 1023303010

Created: 23.03.2021, updated: 03.12.2021

page 4/4

[www.zenitel.com](http://www.zenitel.com)

[info@zenitel.com](mailto:info@zenitel.com)

Zenitel and its subsidiaries assume no responsibility for any errors that may appear in this publication, or for damages arising from the information therein. Zenitel products are developed and marketed by Zenitel. The company's Quality Assurance System is certified to meet the requirements in NS-EN ISO 9001. Zenitel reserves the right to modify designs and alter specifications without notice.

ZENITEL PROPRIETARY. This document and its supplementing elements, contain Zenitel or third party information which is proprietary and confidential. Any disclosure, copying, distribution or use is prohibited, if not otherwise explicitly agreed in writing with Zenitel. Any authorized reproduction, in part or in whole, must include this legend; Zenitel - All rights reserved.