



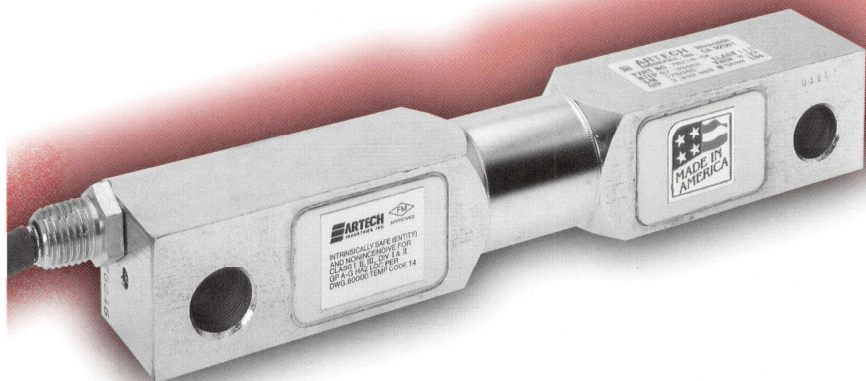
"a preferred name in load cell technology"

Model 70510

Double Ended Shear Beam Load Cell

FEATURES:

- 1K to 125K pounds capacities
- Low profile design
- Nickel/Chrome plated high alloy tool steel
- Complete environmental protection
- Stainless steel version available
- Factory Mutual (F.M.) Approved †



DESCRIPTION:

The Model 70510 double ended shear beam is designed primarily for tank and hopper weighing applications. It is normally used in conjunction with the WM-IV Weigh Module. The cell is environmentally sealed against moisture and plated with Nickel/Chrome to protect it against corrosion. There is also a stainless steel version, SS70510, available for food processing, pharmaceutical applications or hostile environments.

PERFORMANCE SPECIFICATIONS

Standard Capacities (lbs.):	1K, 1.5K, 2K, 2.5K, 3K, 5K, 10K, 15K 20K, 25K, 50K, 100K, 125K
Excitation Voltage:	10VDC - Maximum 15VDC
Rated Output:	3.0 mv/v ± .1%
Non-Linearity:	< 0.03% FSO (Full Scale Output)
Hysteresis:	< 0.02% FSO
Non-Repeatability:	< 0.01% FSO
Zero Balance:	±1.0% FSO
Bridge Resistance:	700 ± 7.0 ohms
Safe Overload:	150% of Rated Capacity
Temperature:	
Compensated Range:	0-150 deg. F
Effect on Output:	< 0.0008% FSO/deg. F
Effect on Zero:	< 0.0011% FSO/deg. F
Finish:	Electroless Nickel/Chrome Plated



APPROVED

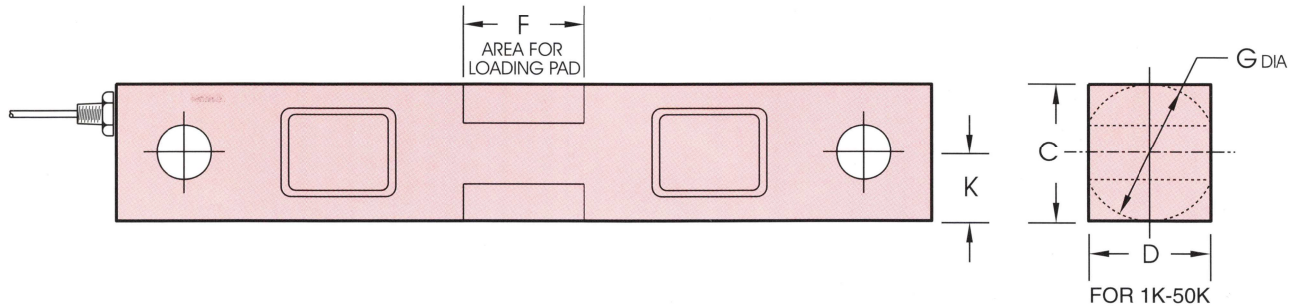
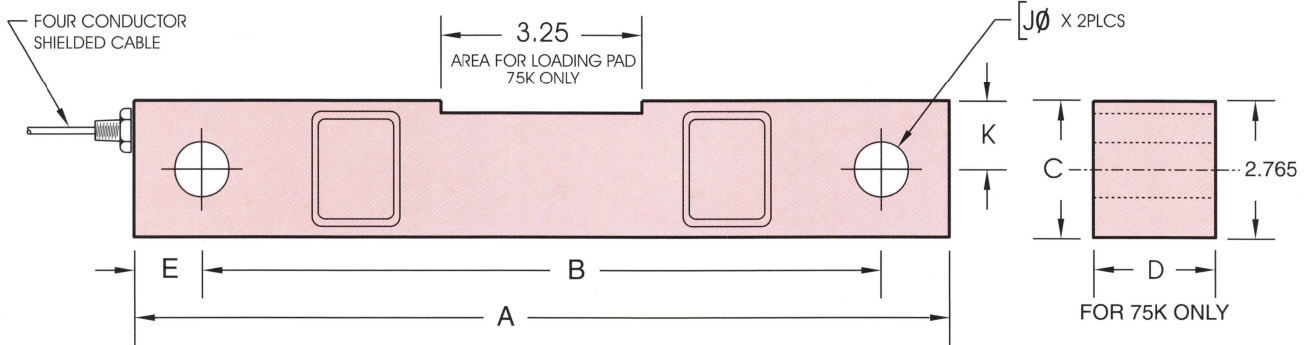


Model 70510



CAPACITY LBS.	A	B	C	D	E	F	G	J	K
1K - 5K	7.50	6.25	1.24	1.24	.62	1.12	1.24	.53	.69
10K - 25K	8.75	7.50	1.94	1.44	.62	1.62	1.99	.81	.97
50K - 75K	13.50	11.50	2.94	2.44	1.00	3.25	3.00	1.31	1.47

- **ELECTRICAL TERMINATION**
- INPUT OUTPUT SHIELD
- RED (+) GREEN (+)
- BLACK (-) WHITE (-)
- **COMPRESSION POSITIVE**

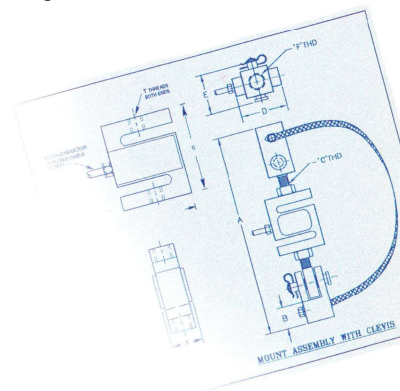


† Factory Mutual Systems approved as intrinsically safe when installed per F.M. approved installation drawing. Contact ARTECH sales department for details.

Represented by:



1966 Keats Drive, Riverside, CA 92501



ORDER INFORMATION

- ◆ ARTECH is dedicated to maintaining adequate inventories of its Load Cells to provide the best service in the industry.
- ◆ Order by the model number and indicate the capacity required.

- ◆ Custom services such as matched load cell outputs, special threading, and custom calibrations are available on an optional basis at an extra cost.

Let us know what you need... we listen!
QUALITY • PERFORMANCE • SERVICE

• (951) 276-3331 • (800) 654-8181 • Fax: (951) 276-4556 •
 Email: info@artechindustriesinc.com • www.artechindustriesinc.com