



Gas



Liquid & Slurry



Solid & Powder



Steam & Water

# SENTRY COBRA C SAMPLER

## Low Emission Samplers

### MANUAL SAMPLING

The Sentry® Cobra C sampler makes the task of collecting representative samples from gas and light liquid hydrocarbon applications simple and safe. The Cobra C sampler uses a multi-ported valve so that the extraction process is simplified while maintaining the integrity of the sample itself. Installation is fast and straightforward, and quick cylinder disconnects allow the sample cylinder to be removed without tools. The Cobra C sampler complies with LDAR and MACT requirements. A sample is collected in a DOT rated stainless steel cylinder for transport. The Cobra C sampler ensures the quality and reliability of the sample.

### MODEL

Cobra C

### BENEFITS

Designed with safety in mind for the operator as well as the environment, the Cobra C sampler provides a low-maintenance solution to sampling requirements. It also offers low-emission sampling, with low spills and low volatile organic compound (VOC) emissions, keeping both pollution and sample contamination levels to an absolute minimum. The Cobra C sampler is ideally suited for use in the petrochemical, refinery and natural gas industries.

### FEATURES

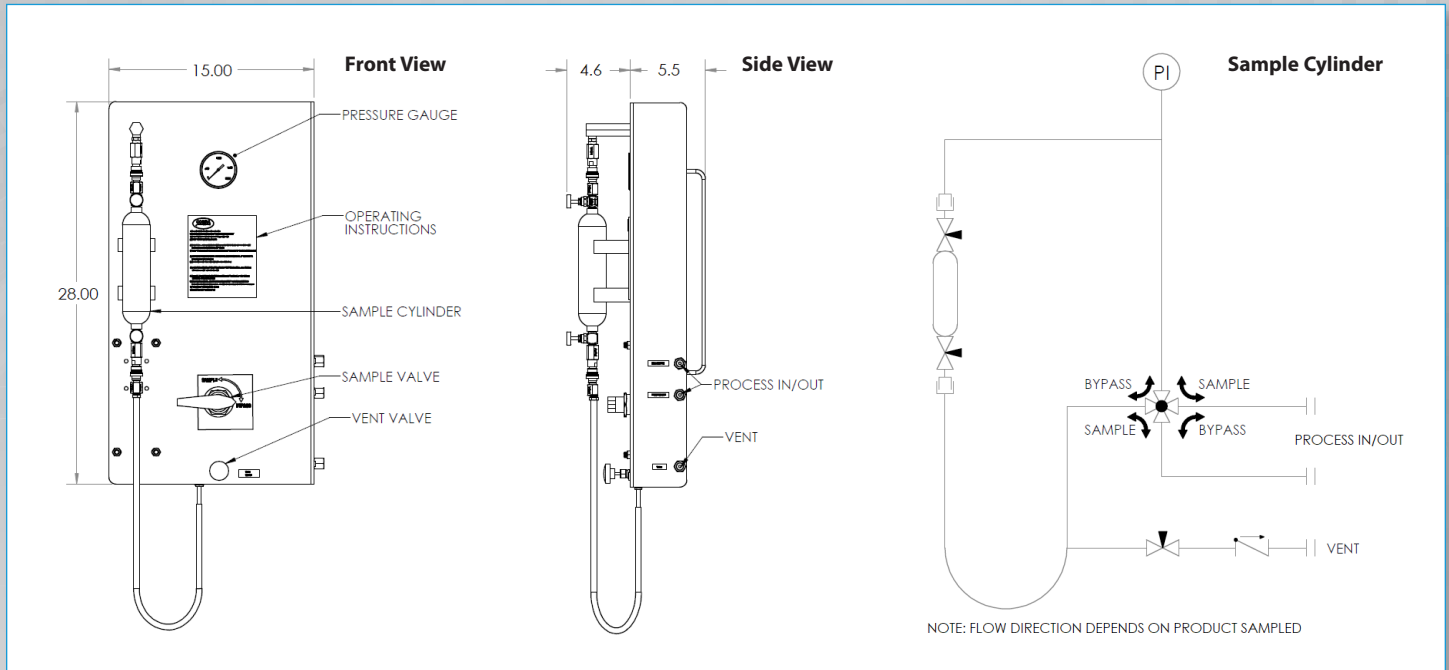
- Collects liquid or gas samples in a DOT rated cylinder
  - Gas flows from top to bottom of sample cylinder to remove any residual material
  - Liquid flows from bottom to top flow against outage tube of sample cylinder
- Multi-port sample valve with a single sample to bypass operation
- Bypass operation allows constant representative process flow, allowing immediate sampling
- Quick disconnects for quick installation of sample cylinder
- Cylinder guides stabilize and support sample cylinder
- Step-by-step instruction tag and valve labels for simple operation
- Side connections are labeled for ease of installation
- For light liquid hydrocarbon and gas applications



Sample. Monitor. Measure.

# SENTRY

Any Application. Anywhere.



**SPECIFICATIONS**

wetted materials	body: stainless steel; Alloy 400 (other materials available upon request) O-rings: Viton® or Kalrez®
process pressure range	0-1500 psi (higher ratings available upon request)
process temperature	<140°F; cooler required for temps >140°F
sampler interface	1/4 in NPT (1/2 in NPT or compression fitting available upon request)
vent connection	1/4 in NPT (compression fitting available upon request)
sample cylinder	300 cc or 500 cc
options	pipe stand (2 in); dual pipe stand for mounting cooler; enclosure process isolation valves (inlet and/or return) sample pump return to vent (flare; emission filter) level gauge sight glass rotameter N <sub>2</sub> purge

[sentry-equip.com](http://sentry-equip.com)

966 Blue Ribbon Circle North, Oconomowoc, WI 53066 U.S.A. | +1-262-567-7256 | [sales@sentry-equip.com](mailto:sales@sentry-equip.com)

© 2018 Sentry Equipment Corp. All rights reserved. Sentry is a registered trademark of Sentry Equipment Corp. All product and company names are property of their respective owners. It is solely the responsibility of end users, through their own testing and analysis, to select products and materials suitable for their specific application requirements, ensure they are properly installed, safely applied and properly maintained, and to limit their use to their intended purpose. Improper selection, installation or use may result in personal injury or property damage.

S-MS-SPS-00522-0 05-18



COMPANY WITH  
QUALITY SYSTEM  
CERTIFIED BY DNV GL  
= ISO 9001 =