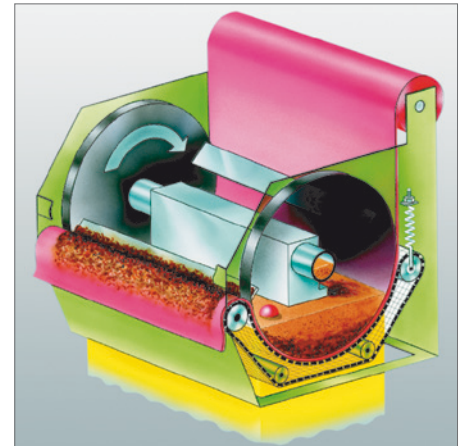


# KBF 803



World-wide the most flexible filtration system -  
Fully automatic filtration over filter paper



Due to the design of a special wheel geometry no sensitive sealing is necessary

Because of the possibility of using different filter papers, the desired effects can be achieved.

The filtration procedure takes place in a semi-circular shaped basin, with hydrostatic pressure of about 300 mm. Two disc wheels form the lateral sealing of the filtration basin. There are several waste removers between the disc wheels, which push out all the dirt. The filter inlet is centric. The outlet occurs throughout the whole area in a vertical downward direction. Dirty paper take up and filter cake stripper for separation of paper and waste are optional.

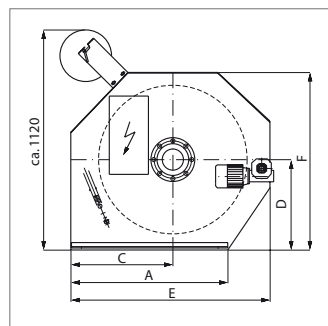
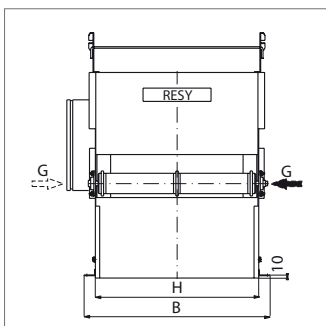
The given filtration efficiencies are to be seen only as a guide. Actual requirements of filter specification are calculated after taking into consideration all provided data. Of importance are:

Throughput, medium, filtration fineness, input of concentration, material and type of waste particles.

Please contact us for further details about your operation.



Automatical paper entry - efficiency by the push of a button!



Laminar belt tensioning over a wide range of the tension sector

	KBF 803/710	KBF 803/1040
A	807	807
B	816	1134
C	519	519
D	460	460
E	1015	1015
F	900	900
G	DN 100	DN 100
H	716	1034
Paper (mm)	710	1040
KW	0.12	0.12
Q=l/min	max. 500	max. 750



Reber Systematic GmbH + Co. KG  
Lembergstraße 26  
D-72766 Reutlingen (Germany)  
Telephone: +49 7121 9483-0  
Telefax: +49 7121 9483-38  
E-Mail: info@resy-filtration.com  
WWW: www.resy-filtration.com  
Quality made in Germany